



**Belgravia Community League**  
11540 73 Avenue NW  
Edmonton, AB T6G 0G1

**Mailing Address:**  
P.O. Box 52202  
Edmonton, AB T6G2T5

**Contact us:**  
Email: [info@belgraviaedmonton.ca](mailto:info@belgraviaedmonton.ca)  
Phone: 780-437-1866 (phone currently not monitored as hall host hours cancelled)  
**COVID-19 Response Team:** 780-802-3666 or [pastpresident@belgraviaedmonton.ca](mailto:pastpresident@belgraviaedmonton.ca)

**Hall host hours:**  
Cancelled

**Visit us online:**  
[@belgraviaYEG](https://twitter.com/belgraviaYEG) (twitter)  
[belgraviaedmonton](https://www.facebook.com/belgraviaedmonton) (facebook)  
<https://www.belgraviaedmonton.ca> (website)

**Next Submission Deadline:**  
March 16, 2022

**Advertise in *the belgravian*:**  
[adsmanager@belgraviaedmonton.ca](mailto:adsmanager@belgraviaedmonton.ca)

**Banner Photo:** Holiday Market submitted by Jeannette Boman

# *the belgravian*

January 2022

## Contents:

- Page 3: BCL Board Updates
- Page 5: Programs at the BCL
- Page 6: BCL Holiday Market
- Page 7: Family Day Event Invitation
- Page 8: Belgravia School Update
- Page 10: Meet Your Neighbour
- Page 11: Charles Simmonds Park Update
- Page 12: Junior Belgravian

## Neighbour-to-Neighbour

Topic: SOLAR PANELS  
Speaker: Mr. Gordon Howell, renowned solar energy expert  
Time: February 1<sup>st</sup>, 2022 7-8 pm  
Zoom Meeting ID: 881 6096 1170  
Passcode: 868752

## 2021/2022 BCL Board & Committee Contacts

President	Michael Cohen	president@belgraviaedmonton.ca
Vice President		vicepresident@belgraviaedmonton.ca
Past President	Cory Dawson	pastpresident@belgraviaedmonton.ca
Secretary	Samantha Graham	secretary@belgraviaedmonton.ca
Treasurer	Shirley Perry	treasurer@belgraviaedmonton.ca
Membership Director	Jane Taylor	membership@belgraviaedmonton.ca
Director at Large	Irene Andersson	abundantbelgravia@belgraviaedmonton.ca
Director at Large	Christina Lau Hoang	director2@belgraviaedmonton.ca
Director at Large	Barry Edgar	director3@belgraviaedmonton.ca
Planning & Place Director	Jerreck Connors	planning@belgraviaedmonton.ca
Communications Co-Directors	Sharlene Stayberg & Mark Maxfield	communications@belgraviaedmonton.ca
Website administrator	Tim Janzen	webmaster@belgraviaedmonton.ca
Facebook administrator	Jonathan Chan	facebook@belgraviaedmonton.ca
Newsletter administrator	Lena Jones	newsletter@belgraviaedmonton.ca
Belgravian ads manager	Lena Jones	adsmanager@belgraviaedmonton.ca
Belgravian distribution team leader	Susanne Rowe	communications@belgraviaedmonton.ca
Programs Director	Debbie Smith	programs@belgraviaedmonton.ca
Made in Belgravia	Jeanette Boman	mib@belgraviaedmonton.ca
Abundant Community Committee	Barry Edgar	director3@belgraviaedmonton.ca
Pumpkin party, Casino	Reg & Jane Norby	norby@shaw.ca
Belgravia Playschool Chair	Miranda Dawson	playschool@belgraviaedmonton.ca
Belgravia Playschool Teacher	Monika Fouad	playschool@belgraviaedmonton.ca
Facilities Director	Ken Goble	facilities@belgraviaedmonton.ca
Hall rental coordinator	Jeanette Boman	hallrental@belgraviaedmonton.ca
Rink manager	Simon Gosgnach	rinkmanager@belgraviaedmonton.ca
Arts park team leader	Kathy Goble	facilities@belgraviaedmonton.ca
Sustainability Coordinator	Imogen Sellman	sustainability@belgraviaedmonton.ca
<b>Community Connections</b>		
Neighbourhood Resource Coordinator	Kate Russell	kate.russell@edmonton.ca
Belgravia Elementary Liaison	Cory Dawson	info@belgraviaedmonton.ca
U of A community consultation		director4@belgraviaedmonton.ca
Belmac Soccer Coordinator	Carley Haynes	belmac@belgraviaedmonton.ca
Belgravia Watch	Richard Law	belgraviawatch@gmail.com

### Sure Foundation Counselling Services

- safe, welcoming, affordable
- seeing singles, couples, and late teens
- Christian counsellor, happy to work with any person, regardless of faith or belief

Rod MacKenzie, MA (587) 594-8138

[www.surefoundationcounselling.com](http://www.surefoundationcounselling.com)

### ST. GEORGE'S ANGLICAN CHURCH, 11733-87 AVE.

Has concert/recital space for music teachers and students

- *Yamaha C2 Grand Piano*
- *Beautiful, intimate setting with seating capacity of 150*
- *Good acoustics*
- *Proximity to U of A Campus*
- *Intermission/reception space available*

For more information, please contact David Cass  
([d.cass@ualberta.ca](mailto:d.cass@ualberta.ca))

## BCL Board Updates

### BCL Rink

Initially the weather cooperated so that Simon and his rink team could get the ice in and ready by early December to allow for some good skating. But then a mid-month cold spell hit which lasted through the holidays and into January. There are benches outside the main entrance gate to the rink for skate changing – the inside skate-change room remains closed due to Covid restrictions. Here are some things to consider if skating:

- No garbage can by the rink but some on other side of the hall – please clean up after yourself
- The surface will be cleared and flooded as weather permits. A couple of large blue shovels are available to touch things up as you see fit
- The rink schedule is posted outside the main entrance but it is generally open daily 8:00 am to 9:45 pm (lights go out at that time and outside access to the washroom ends at 8:30 pm)
- No dogs allowed on the rink
- Accommodate others - nets can be moved as needed
- A small “learner’s” pond is just outside the main rink
- Observe all AHS restrictions
- You need to show a skate tag and be a member of the BCL (or be an associate member through another City Community League). See the BCL website for info or contact:  
membership@belgraviaedmonton.ca
- Remember, we’re all volunteers and working hard to provide this excellent facility. Please do your part

### Renewal update

As you may recall, last summer (at the other extreme end of the temperature spectrum) we formed a team to do repairs to the rink to keep it going until we have something more formal in place. Tom Hinch leads a committee whose mandate it is to take down the old rink and replace it with a sustainable, year-round activity area for the community. They have completed the first stage of the renewal with an initial proposal that has been approved by the City.

Any questions/comments can be sent to me at facilities@belgraviaedmonton.ca

Ken Goble  
BCL Facilities Director

### Planning in Place: What to Expect in 2022

Happy New Years to all! 2022 will be a very eventful year for Belgravia, so expect to hear more about the following:

- Metro 78 – anticipated for a Council Hearing with date TBD in 2022
- Charles Simmonds Park & Belgravia Rink renewal projects – upcoming long-term infrastructure projects were given the recent go ahead to start planning & concept development
- Zoning Bylaw Renewal – Edmonton is overhauling the rules permitting what people can do with their land. This has major implications for how Belgravia develops into the future. A draft of the changes are expected around Q2 2022.
- Westrich Development Proposal – Land owned near the LRT station is expected to be submitted for a multi-unit rezoning proposal. Community notices and feedback will be sought throughout 2022 as the application progresses.

This year, you will be seeing and hearing more from the wonderful volunteers on the Belgravia Community Planning Committee (BCPC) as they assist in the various community projects. If you have any questions on the upcoming items, or are looking to help volunteer, please reach out to Jerreck Connors at planning@belgraviaedmonton.ca

# the belgravian

Published by Belgravia Community League, the Belgravia newsletter reports on the community news, programs and events in and around the Belgravia area.

## Frequency

We publish 6-7 issues per year

## Monthly Distribution

We deliver approximately 1000 copies to homes in Belgravia.

## Online

<https://belgraviaedmonton.ca/newsletter/>

## Advertising

Advertisements should be submitted to [adsmanager@belgraviaedmonton.ca](mailto:adsmanager@belgraviaedmonton.ca)  
Advertising for businesses located outside of Belgravia, McKernan, and Windsor Park are limited to business card size.

## Editorial Submission

Submission are subject to editorial discretion and available space. To submit an article email [newsletter@belgraviaedmonton.ca](mailto:newsletter@belgraviaedmonton.ca)

## Schedule

Issue	Content Deadline	Delivery
September 2021	Aug 18	Aug 28/29
October 2021	Sep 15	Sep 25/26
December 2021	Nov 17	Nov 27/28
February 2022	Jan 19	Jan 29/30
April 2022	Mar 16	Mar 26/27
June 2022	May 18	May 28/29
August 2022	July 14	July 24/25
October 2022	Sep 15	Sep 25/26
December 2022	Nov 17	Nov 27/28

## Sidewalk Snow and Ice Removal

Snow and freeze/thaw cycles can result in hazardous conditions on walkways and sidewalks. These conditions are a safety concern for everyone — particularly for those with limited mobility, service providers and waste collectors.

Property owners should remove snow and ice as soon as possible, especially during days of continuous snowfall and during freeze/thaw cycles. As residents of a winter city, we need to be considerate of the impact snow-covered and icy sidewalks have on our neighbours and fellow citizens.

Failure to maintain your sidewalks could result in a \$100 fine plus potentially any cleanup costs.

Free sand is available at the following locations in Belgravia:

- 115 street - 73 Avenue (by access to playground)
- Saskatchewan Drive - 78 Avenue (at top of stairs to river valley)
- Saskatchewan Drive - 74 Avenue (at top of stairs to river valley)
- LRT Station (2 by rail at bottom of ramp)

If boxes need refilling call 311.

## Strategic Review of Belgravia Playschool

One of the priorities in the renewed BCL strategic plan is to “review and potentially modify the playschool program to meet the needs of the community.” This priority was prompted by lower enrollment in the playschool over the past few years. The aim is to determine if there are adjustments to the model or approach to the playschool that best suits families in Belgravia who are prospective participants in the upcoming years. For example, the hours of operation, volunteer commitment and the curriculum, may be addressed in the review, among other elements.

The BCL is now forming a committee to conduct the review and is seeking one or two additional members with an interest in the future of the playschool. The terms of reference for the Committee and a plan to conduct the review are in early draft. Wider participation in the review and its elements (but anticipated to draw on surveys, focus groups, key respondents and relevant research) will be promoted through BCL newsletter and media. If you are interested in staying in touch, or serving on the Committee, please contact us at [info@belgraviaedmonton.ca](mailto:info@belgraviaedmonton.ca)

## Programs at the BCL

Email [programs@belgraviaedmonton.ca](mailto:programs@belgraviaedmonton.ca) to register for classes!

**PILAGA** is a Combination of Yoga and Pilates. Suitable for all fitness levels with variations to make poses easier or more challenging are offered in every class. The focus is on mindful movement.

Cost: \$150/10 weeks (or drop in for \$20/class)

Mondays 9:30 am - 10:30 am Jan 10 - Mar 14, 2022

### **ART/ACRYLIC PAINT CLASS:**

Learn new techniques, tips, and styles of acrylic painting while working toward an end goal. All art supplies and materials are provided, including tablecloth and aprons. Classes are usually divided by age (kids/adults). Vaccination restriction exemption protocols will be followed.

Cost: \$264/12 weeks or drop in for \$25/person/class

Spring start if enough interest is registered (minimum 6 attendees per class to run the program)

### **NIA DANCE:**

Nia is a holistic fusion of dance, martial arts, and the healing arts that creates a transformational workout for body, mind, and spirit. Take off your shoes and get moving for health and wellness! No previous experience necessary and all fitness levels welcome. While following along to choreography based on 'the body's way', participants are invited to sense how movement can feel good and do good for the whole body. Nia is a non-impact movement practice and, typically, done in bare feet but if participants need shoe support, please wear inside-only non-marking footwear that is easy to move in. Comfortable clothing, a yoga mat, and a water bottle is also suggested. For more information about Kirsten Bartel and Nia, please email [fleurishmovement@gmail.com](mailto:fleurishmovement@gmail.com) or go to [fleurishmovement.com](http://fleurishmovement.com)

Cost: \$150/10 weeks (drop in is also welcome at \$20/class)

Thursdays 7-8pm from Jan 13– Mar 17, 2022 BCL Hall upper level

### **SOAPSTONE CARVING:**

This very popular class is returning with Pat Galbraith as the instructor to help you carve ART from soapstone! Pat will guide you through all the steps for 2 hours each Monday evening. For more information about the class email Pat at [patgal@shaw.ca](mailto:patgal@shaw.ca)

Cost is \$150/10 weeks

Mondays 7-9 pm from Jan 10 - Mar 28, 2022 BCL Hall upper level

### **Walking Group:**

Meets every Wednesday morning at 10 am. This isn't a class but neighbors getting together at no cost to enjoy the trails and enjoy nature. We have regulars that rarely miss a walk but all are welcome to join in.

It's very good exercise at a pace dependent on the walkers and varies from 1 to 2 hours depending on the weather etc. Usually, walkers will end at MOOD CAFE for a cappuccino.

### **Winterscapes Contest: Jan 10 - Feb 28, 2022**

The Winterscapes Photo Contest gives Edmontonians an opportunity to be creative and imaginative, showcasing their winter gardens, art projects and playful designs. A winterscape is a way of decorating a yard or landscape using snow, ice, natural objects, colour, decorations, and lights.

You can create a winterscape in your front yard or next to a community hall, office/business building or school. Spread winter cheer starting January 10th and beautify your neighbourhood! Submit your nominations for yourself or neighbours by February 28th at city of Edmonton website: [https://www.edmonton.ca/programs\\_services/landscaping\\_gardening/winterscapes](https://www.edmonton.ca/programs_services/landscaping_gardening/winterscapes)

## The 2021 BCL Holiday Market

The Holiday Market occurred on December 11th. All in all, it was indeed a success. Over 150 people came to the market and the 19 vendors who participated claimed they sold more this year than in previous years!

Thanks to Barry Edgar for doing all of the QR checks, Jane Taylor for helping sell more memberships (some came just for that reason alone), Shirley Perry for hosting the outdoor hot apple cider, gingersnap cookie and Christmas cake station, Jane and Greg Taylor for getting the fire bowl over to the hall, Ken Goble for getting the wood to the hall, and Kevin Taft for starting and minding the fire all afternoon. Bryan Taylor (owner of The Gramophone) brought speakers for the upper and lower hall along and we can thank him for selecting a list of songs of the season to help set the tone of the afternoon.



And a big thanks to our communication team Sharlene, Mark, Tim & Jonathan for getting the word out via the newsletter, our web page, Facebook & e-blasts as well as Irene Anderssen who posted the information on Nextdoor ... all these avenues brought in people from outside of Belgravia as well as our own residents ... in spite of the icy conditions. Thanks to Ruth Bryne & Jim Kennedy, our ice and snow clearing team who were at the hall bright and early clearing the walks around the hall down to the concrete.

Wendy Davis arranged for a beautiful cake to be raffled off from Mood Cafe which Ed delivered in person. Wendy and her team handled the raffle tickets at her table and in the end, raised \$32 as a donation to the BCL. The winner of the cake was Brigette Lesko (Twin Brooks) who was visiting her son who lives in Belgravia.

Next year we hope we'll be finished with the pandemic ... but in spite of the Exemption Restrictions protocol we followed, everyone was ready to enjoy this year's market!

Thanks again to the many hands that helped make this happen,  
Jeanette & Phyllis



# Photos from The BCL's 2021 Holiday Market



## Family Day 2022

Come out and celebrate Family Day 2022 in the Arts Park\*!

Monday February 21st 2022  
1 - 4 pm

❖ Snow building fun with Winter Town theme for adults and kids alike

❖ Everyone is FAMILY and ALL are welcome!

❖ Treats/prizes to all participants!

❖ Mood Cafe hot chocolate, cookies for everyone - Marshmallows too!



❖ Craft activities and winter games on the rink and Mt Belgravia

➤ Stay tuned for further details on the BCL webpage ([belgraviaedmonton.ca](http://belgraviaedmonton.ca)), Facebook and eblast

This event will follow all public health protocols

\*Corner of 73 Ave and 115 Street

## Belgravia School Thanks Healthcare Workers

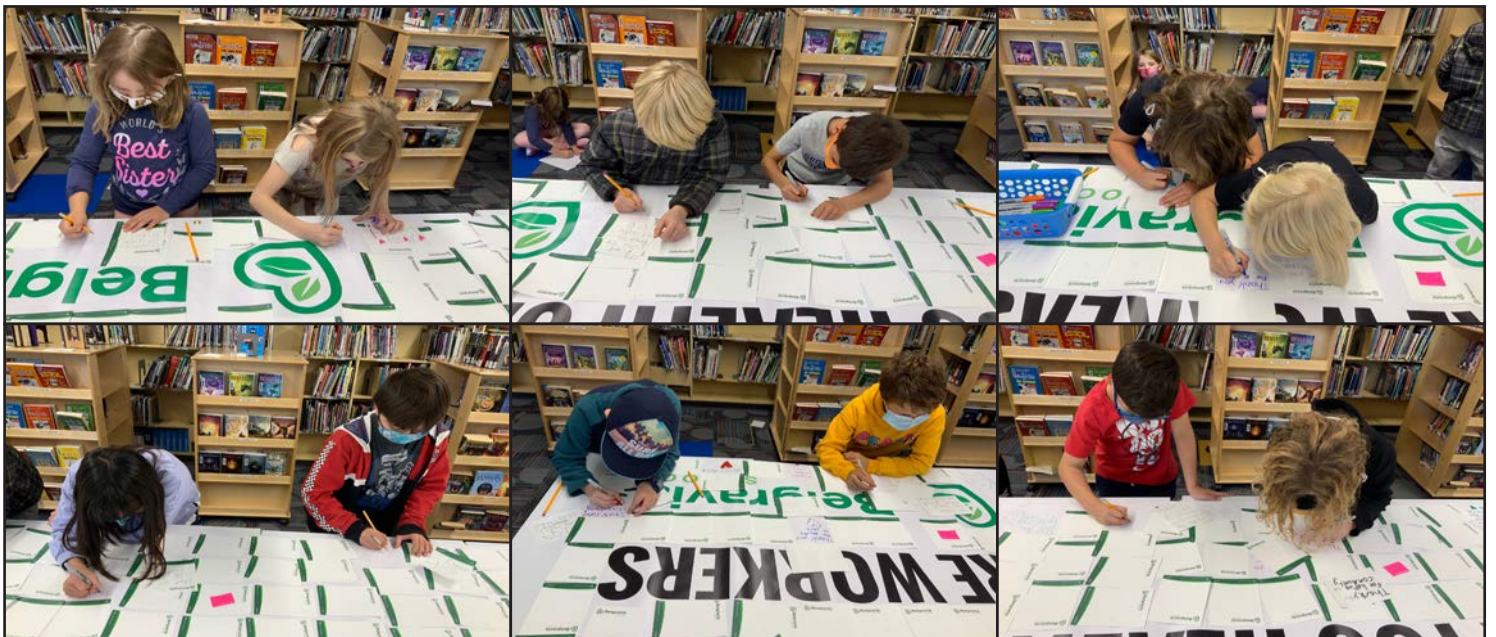


Many students, staff and parents in Belgravia School wanted to thank the health care workers who have been working so hard to protect our community during this pandemic. The question was how to do this.

With the help of parents who ordered a banner that said “Thank you Health Care Workers”, staff and students, who took time out of their day to organize and write on the banner, the students of the school created a beautiful display with thoughtful notes of thanks written on it.

The Grade 3 class decided to share the banner with the community. They walked the banner to University Avenue, right across from the Kaye Clinic. They were joined by two wonderful Grade 3 parents, who brought zip ties to attach the banner to the metal walkthrough frame that protects people walking on the sidewalk. The class hung the banner for the entire Belgravia Community to see.

We hope that as our Belgravia community and school family members walk or drive past the banner, they are reminded of all the love and support that our amazing health care workers have given us. So, thank you from all of us at Belgravia school. We hope that all of our health care workers have many great days coming up! We truly appreciate all that you have and continue to do for us!!







# Snow Keepers Program

A SNOW REMOVAL PROGRAM  
HOSTED BY THE UNIVERSITY  
OF ALBERTA CAMPUS  
UNICEF CLUB



## About Campus Unicef

Campus Unicef is a student-run club hosted by the University of Alberta. We organize events and fundraisers in accordance with the views and goals of Unicef Canada. We strive to make a positive change in our community!



## The Snow Keepers Program

Snow Keepers is our club fundraiser for Unicef Canada while helping others! Many seniors find it difficult to shovel during winter, so Campus Unicef has gathered some volunteers to tackle this problem!

Since we are a volunteer-driven nonprofit organization, there is no contract or waiver needed to be signed between volunteer and senior client. This makes it even easier to get started!

## How It Works

WIN - WIN: Seniors get to enjoy our service (free, donation-based) - and we get to fundraise for Unicef Canada!

### Getting Started:

1. Contact us with an interested senior.
2. We will pair every senior with a volunteer who lives within the same area code.
3. Whenever the senior client needs their driveway cleared, they'll call their assigned volunteer and set up a time & date.



## Contact Us



Questions or interested?

[snowkeepers.ualberta@gmail.com](mailto:snowkeepers.ualberta@gmail.com)

OR

call one of our executives,  
Phoenix: 780-862-7360

### Learn more about our club:



<https://caunicef.org/>



[caunicef\\_ualberta](https://www.instagram.com/caunicef_ualberta)

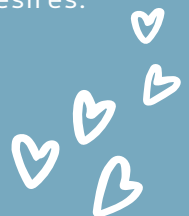


Unicef on Campus -  
University of Alberta



## Things to Note

- We would greatly appreciate it if the senior client could provide a monetary donation to our club, [caunief@ualberta.ca](mailto:caunief@ualberta.ca), each time snow is shovelled. This helps us meet our fundraising goal for Unicef Canada, and make a difference!
- This is a flexible program and can be long or short-term depending on the senior clients desires.



## 'What We Heard' from Charles Simmonds Park Community Survey

The Charles Simmonds Park Renewal Project has completed a Needs Assessment Survey to determine park-related needs and desires of the local community. The findings of the survey will help drive the design of the renewal of the park and playground. The community surveyed included local residents in McKernan and Belgravia, and surrounding communities. A total of 161 responses were received, with respondents from households aged 2 to >65 years. The survey identified qualities of Charles Simmonds Park that are valued the most by the community. The quiet open green space that allows multiple types of activities by local residents was the most valued feature of the park. Of the respondents, 60% supported upgrades and/or additions to the park and 21% supported upgrades only to existing amenities. Preserving the open green space for free play, picnics and social gatherings was considered most important. Over 30% of respondents used the park daily all year round and 30% weekly all year round. Major uses were ball/frisbee games, picnics and playground play, walking through, while other uses included cross country skiing, walking dogs, working out, playing in the trees and flying kites.

Comments on what qualities were valued included:

- Open natural green space (78%) and mature trees (14%)
- Large open space for children to run free, play ball games and other activities (35%)
- Playground (7%) and park is away from busy road
- Convenient for local users (16%) and is shortcut through neighborhood (12%)
- Quiet (12%), tranquil, not too busy
- Dog walkthrough-walking (6%)

The feature of the park that was the most important to preserve was the open green space (69%), followed by upgrades to the playground, split between amenities for preschool children and school-age children. Most important features for the playground included swinging, nature play, climbing, sliding, adventure play and hanging/reaching. Amenities that rated highly for adding to the park included picnic tables, benches, walking paths, a shade structure and a designated off-leash area.

The results of the survey were shared at the Belgravia Community League Annual General Meeting on September 18th, 2021 and feedback and ideas were received from community members.

We have completed the Strategy phase of the project which included a proposal submitted and assessed by the City's Park & Facility Development Team for general viability of the project. The project has been classified as an Intermediate (Playground Replacement) project and can be supported by funding through the Neighborhood Park Development Program and other community fundraising. The next part of the project is the Concept phase in which a City project manager and landscape architect are assigned to work with the community on a concept plan for the design of the park-playground. We will be seeking feedback and input from the community on the proposed concept design of the park and playground.

For the full survey report and updates on the project visit

<https://www.mckernancommunity.org/charles-simmonds-park>



## Charles Simmonds Park Renewal Project



**Heather  
McPherson**  
Member of Parliament  
Edmonton Strathcona

**Contact my office for  
assistance with:**

- Employment Insurance
- Old Age Pensions
- Canada Revenue Agency
- Citizenship & Immigration
- Canada Student Loans
- Celebratory Messages

**780-495-8404**  
10045 81 Ave T6E1W7



heather.mcpherson@parl.gc.ca  
Follow on   

Visit my website at [www.heathermcpherson.ndp.ca](http://www.heathermcpherson.ndp.ca)



## Meet Your Neighbour - Block Connector Spotlight: Debbie Smith

Hi, my name is Debbie Smith, I'm the Programs Director for the Belgravia Community League. I raised 3 children who are now in their mid to late 30's and while they were growing up I worked as a medical lab technologist. Once the children became quite independent I began my real estate career and have now been a REALTOR for 23 years, presently with REMAX. I lived at our home in St. Albert for 22 years. I decided to move to Belgravia since I was now on my own in a big home and it was time to downsize. I chose Belgravia because I love nature and wanted to live close to trails with beautiful views all of which one can find in Belgravia in spades! I also thought the LRT was very important to have so close by as well. I now visit my 9 grandchildren and 6 children (including spouses) almost daily as they are still easy to visit in St. Albert and Sturgeon County. I moved to Belgravia at the beginning of Covid on April 1, 2020.



I am a Block connector in Belgravia Square. Covid definitely makes it challenging to connect, however I do get the BELGRAVIAN newsletters out to as many people as I can and have also joined the condo board to be as helpful as possible. Being a Block connector has helped me to know Belgravia more and allows me to help our block to know about upcoming events and programs that make Belgravia so special. Belgravia Square is very new and not yet fully sold so it is definitely an ongoing experience to get to know people as they move in but in 2022 we should see more normalization as we go forward.

I love spending time with my family and grandchildren. I would easily consider this to be my favourite pastime because they are all a total joy! My pandemic hobby is learning the stock market which is totally fun and keeps me thinking. I love the Belgravia programs as well, participating with the walking group, Nia's exercise class and Pilaga, and of course serving in the Belgravia Community League as program director and President of Belgravia Condo Assoc. I am addicted to the business channel and have to pull myself away as too much time goes by before I realize it. I do computer work for clients in my real estate business, Zoom calls for the BCL meetings and Condo assoc board. I regularly play golf at courses throughout Edmonton and surrounding areas with various women's leagues. I also enjoy walking through our trails mostly with the Belgravia residents and making trips to MOOD cafe!

The best part of Belgravia is, it is the friendliest and most beautiful neighborhood in Edmonton! The easy walk to the river valley is precious. Things will be better once covid rules are gone but the friendly and welcoming residents of Belgravia make things less stressful. We are working on getting regular outdoor entertainment to the Arts Park which will be great!

### **BCL Survey on Cell Phone Reception**

Have you experienced dropped calls or other cell phone reception problems within Belgravia? If so, the BCL would like to hear about it. Please send a description of the problems you've encountered, including the wireless carrier involved (Rogers, Telus, etc.) to [president@belgraviaedmonton.ca](mailto:president@belgraviaedmonton.ca). The BCL will compile the information received, which will enable us to follow up in a more informed way with any companies that are the subject of numerous complaints.

# Happy Valentine's Day Junior Belgravians!

## I LOVE YOU: AROUND THE WORLD

Match each language with the correct translation of 'I love you'

- |              |                                      |
|--------------|--------------------------------------|
| 1 Korean     | ___ te amo                           |
| 2 French     | ___ kisâkihitin                      |
| 3 Spanish    | ___ watashi wa, anata o aishiteimasu |
| 4 Thai       | ___ salanghae                        |
| 5 Tagalog    | ___ je t'aime                        |
| 6 Dutch      | ___ ti amo                           |
| 7 Cree       | ___ P hm rak khun                    |
| 8 Pig Latin  | ___ kocham Cię                       |
| 9 English    | ___ ya tebe lyublyu                  |
| 10 Ukrainian | ___ Inii big kita                    |
| 11 Somali    | ___ ik hou van je                    |
| 12 Danish    | ___ Waan ku jeclahay                 |
| 13 Zulu      | ___ Se agapó                         |
| 14 Polish    | ___ Ngiyakuthanda                    |
| 15 Japanese  | ___ I love you                       |
| 16 Greek     | ___ Jeg elsker dig                   |
| 17 Italian   | ___ Iyay ovelay ouyay                |

Key: 3, 7, 15, 1, 2, 17, 4, 14, 10, 5, 6, 11, 16, 13, 9, 12, 8  
(The numbers refer to the correct language from top to bottom)

What did the chef give to his wife on Valentine's day?

A hug and a quiche

What kind of Valentine's Day candy is never on time?

ChocoLATE.

What did the calculator say to the pencil on Valentine's Day?

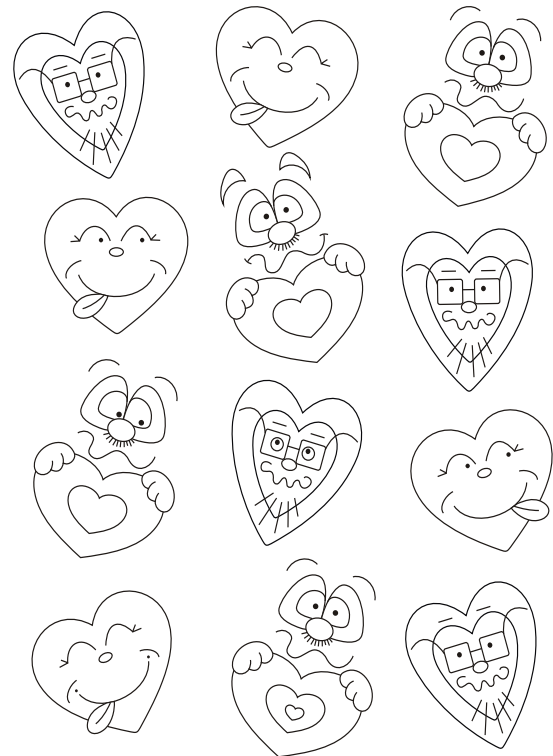
"You can always count on me."

And what did the tweenager give his mom?

Ughs and kisses!

## My Funny Valentine

Can you find the 2 matching hearts?



squishycutedesigns.com Copyright © All Rights Reserved

Junior belgravians, do you have an interesting idea for the Junior belgravians page? Would you like to share your art, writing, or talents on this page? Let us know: newsletter@belgraviaedmonton.ca

## Here's My Heart Valentine!

Be My Valentine!



Only two hearts in the tree are exactly alike. Find them and color the picture!