



# *the belgravian*

January/February 2021

## **Belgravia Community League**

11540 73 Avenue NW  
Edmonton, AB T6G 0G1

## **Mailing Address:**

P.O. Box 52202  
Edmonton, AB T6G2T5

## **Contact us:**

Email: [info@belgraviaedmonton.ca](mailto:info@belgraviaedmonton.ca)  
Phone: 780-437-1866 (phone currently not monitored as hall host hours cancelled)  
**COVID-19 Response Team:** 780-802-3666 or  
[pastpresident@belgraviaedmonton.ca](mailto:pastpresident@belgraviaedmonton.ca)

## **Hall host hours:**

Cancelled

## **Visit us online:**

[@belgraviaYEG](https://twitter.com/belgraviaYEG) (twitter)  
[belgraviaedmonton](https://www.facebook.com/belgraviaedmonton) (facebook)  
<https://www.belgraviaedmonton.ca> (website)

## **Next Submission Deadline:**

February 17, 2021

## **Advertise in *the belgravian*:**

[adsmanager@belgraviaedmonton.ca](mailto:adsmanager@belgraviaedmonton.ca)

**Banner Photo:** Stairs in River Valley, by G. Beck

## **Issue Highlights:**

- Page 3: Belgravia Planning update
- Page 4: Waste Collection in Edmonton  
Belgravia's Secret Scavenger Hunt
- Page 5: Selfless students in Belgravia
- Page 6: Outdoor Winter Opportunities
- Page 7: Meet Your Neighbor
- Page 9: Metro 78 Development -  
Belmac Neighbors
- Page 10: Junior Belgravians
- Page 11/12: BCL Survey for Metro 78

## ***Belgravia Community League Memberships***

If you are new to the neighbourhood, memberships are complimentary for the first year. Need to renew? Please contact [membership@belgraviaedmonton.ca](mailto:membership@belgraviaedmonton.ca). Memberships can also be purchased online:

<https://belgraviaedmonton.ca/bcl-membership/>

## 2021 BCL Board & Committee Contacts

President	Cory Dawson	president@belgraviaedmonton.ca
Vice President	Eleanor Olszewski	vicepresident@belgraviaedmonton.ca
Past President	Michael Cohen	pastpresident@belgraviaedmonton.ca
Secretary	Samantha Graham	secretary@belgraviaedmonton.ca
Treasurer	Greg Jones	treasurer@belgraviaedmonton.ca
Membership Director	Susan Andrew	membership@belgraviaedmonton.ca
Director at Large	Kevin Taft	director1@belgraviaedmonton.ca
Director at Large	Christina Lau Hoang	director2@belgraviaedmonton.ca
Director at Large	Barry Edgar	director3@belgraviaedmonton.ca
Planning & Place Director	Jerreck Connors	planning@belgraviaedmonton.ca
Transportation Committee	Jordan Hoffart	transportation@belgraviaedmonton.ca
Communications Co-Directors	Sharlene Stayberg & Mark Maxfield	communications@belgraviaedmonton.ca
Website administrator	Tim Janzen	webmaster@belgraviaedmonton.ca
Facebook administrator	Jonathan Chan	facebook@belgraviaedmonton.ca
Newsletter administrator	Lena Jones	newsletter@belgraviaedmonton.ca
Belgravian ads manager	Lena Jones	adsmanager@belgraviaedmonton.ca
Belgravian distribution team leader	Susanne Rowe	communications@belgraviaedmonton.ca
Programs Director	Debbie Smith	programs@belgraviaedmonton.ca
Made in Belgravia	Jeanette Boman	mib@belgraviaedmonton.ca
Abundant Community Committee	Barry Edgar	director3@belgraviaedmonton.ca
Pumpkin party, Casino	Reg & Jane Norby	norby@shaw.ca
Belgravia Playschool Chair	Miranda Dawson	playschool@belgraviaedmonton.ca
Belgravia Playschool Teacher	Monika Fouad	playschool@belgraviaedmonton.ca
Facilities Director	Ken Goble	facilities@belgraviaedmonton.ca
Hall rental coordinator	Jeanette Boman	mib@belgraviaedmonton.ca
Rink manager	Simon Gosgnach	rinkmanager@belgraviaedmonton.ca
Arts park team leader	Kathy Goble	facilities@belgraviaedmonton.ca
Community Connections		
Neighbourhood Resource Coordinator	Kate Russell	kate.russell@edmonton.ca
Belgravia Elementary Liaison	Cory Dawson	info@belgraviaedmonton.ca
U of A community consultation	Sean Gerke	director4@belgraviaedmonton.ca
Belmac Soccer Coordinator	Carley Haynes	belmac@belgraviaedmonton.ca
Belgravia Watch	Richard Law	belgraviawatch@gmail.com

### ST. GEORGE'S ANGLICAN CHURCH, 11733-87 AVE.

Has concert/recital space for music teachers and students

- *Yamaha C2 Grand Piano*
- *Beautiful, intimate setting with seating capacity of 150*
- *Good acoustics*
- *Proximity to U of A Campus*
- *Intermission/reception space available*

For more information, please contact David Cass  
([d.cass@ualberta.ca](mailto:d.cass@ualberta.ca))

### Upcoming Neighbour to Neighbour Lecture Sleep and Your Health

Dr. Cheryl Laratta

7pm Wed Feb 3, 2021

Further information and ZOOM link to be  
distributed through BCL e-blast



## BCL Board Updates

### Belgravia Planning – New Year Update

Greetings to all for what is expected to be a busy year! While 2020 started heating up with buzzing of a development proposal for the 'McKernan Hip', 2021 is going to be hectic right out of the gate!

Already planned for this year are advancements to the 6-storey proposal along 78 Ave NW. A survey was recently circulated online; a physical version is included in this newsletter for those who missed it. This edition also includes a separate submission on this topic from a neighborhood group (BelMac neighbors).

Beyond the development proposal, plans around upgrading Charles Simmonds Park are starting up, garbage collection and neighborhood bus routes are going to change, and the City of Edmonton will be looking at overhauling the Zoning Bylaw to better align with the new City Plan.

Recently, the Belgravia Community Planning Committee (BCPC) was reinstated to help with the ongoing/upcoming planning related items in the community. The BCPC will also work on being more proactive in facilitating future projects, events, and activities the community wants to see. Warmest of welcomes to Don Grimble and Larry Krushelnitzky who have joined to help on the committee!

The BCPC is also looking to expand with new and diverse voices! If you are interested in getting involved with community planning related matters, please contact Jerreck Connors at [planning@belgraviaedmonton.ca](mailto:planning@belgraviaedmonton.ca)

Jerreck Connors  
Director – Planning & Place

#### Green & Gold Community Garden West Coast Seeds Fundraiser

Support the **Green & Gold Community Garden 2021 fundraiser\*** by ordering only the best this spring: Canadian No. 1, untreated & non-GMO vegetable, flower & herb seeds from *West Coast Seeds*.

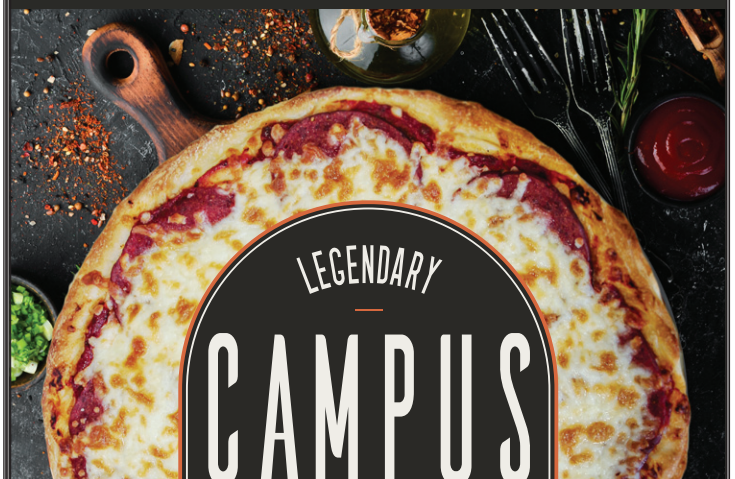
**Orders must be in by February 8, 2021.** Seeds are shipped to Edmonton & the Garden volunteers will **notify you when order is available for pick up.**

To order:

- Go to the [West Coast Seeds fundraising program website](#).
- **Browse** through 4 pages of available seeds.
- **Select the seeds you want to order.**
- Click on **"Cart"**
- At the bottom of the Check Out screen, you will see **"Select your organization"**. Choose **Green & Gold Community Garden** in the dropdown menu.
- Under **"Participant name"** put your name, phone number, address & email so we can contact you.
- Pay for your order online by credit card or other payment options as shown.
- If questions about fundraiser or problems in placing your order, contact [ggsd@ualberta.ca](mailto:ggsd@ualberta.ca) or 780-492-4087.

\* Green & Gold Community Garden receives 40% of the funds raised for the purchase of 2021 season garden equipment & supplies.

PART OF YOUR LOCAL COMMUNITY SINCE 1981



7610 112 Street NW, Edmonton / 780-434-4414

**Free delivery** within 5 km (min. \$20 order)

**10% off** pick up orders or curbside pickup

[www.campuspizzaco.com](http://www.campuspizzaco.com)

NEW WEBSITE

## Community Updates

The City of Edmonton is changing its waste collection system. Single-unit and some multi-unit homes will be provided with a 240L garbage cart, a food scraps cart and a food scraps pail between March 2021 and August 2021. **A smaller, 120L cart can be requested by February 12, 2021 for a decreased monthly rate.** More information regarding the new system can be found at: [https://www.edmonton.ca/programs\\_services/garbage\\_waste/edmonton-cart-rollout.aspx](https://www.edmonton.ca/programs_services/garbage_waste/edmonton-cart-rollout.aspx)



240L cart fits approximately 4-6 regular garbage bags



120L cart fits approximately 2-3 regular garbage bags

Prefer a small garbage cart?  
Request your 120L cart here:  
<https://edmonton.rehrigvision1.com>

### Four collection services:

**Garbage:** Collected every 2 weeks year-round, using cart provided by the City.

**Food Scraps:** Collected weekly from spring to fall, and bi-weekly in the winter, using cart provided by the City.

**Recycling:** Collected in blue bags year-round.

**Yard Waste:** Collected twice in spring and twice in fall.

## Belgravia's Secret - North Edition Winner & Extension!

Our first winner is Mira Warkentin. **Congratulations Mira and team Fun Pickles!** Mira's solution (a drawing!) will be published in the next next issue as to not reveal the secret just yet.

In the meantime we will be keeping the **hunt open until Feb 14** and do a draw for two more winners at that time. To join, download the free app, Actionbound, on a smart phone. Scan the QR code below with the app and get started!



Solve the secret and submit to [director3@belgraviaedmonton.ca](mailto:director3@belgraviaedmonton.ca) for a chance to win! Happy hunting!

(BCL members eligible for prize)

Welcome to the adventure walk Belgravia's Secret - Part II! Visit each of the mystical sections on this map, find some secret spots, answer quizzes correctly and solve a few problems. You will get a puzzle piece after each stage! Can you unscramble them in the end to reveal the secret word?



Dear Belgravians,

It is time once again for me to say a big THANK YOU to all my Belgravia friends and neighbours for making my Christmas and 92nd birthday a happy occasion. While all of us were respecting the protocol due to the corona virus, I loved the ringing of my doorbell, outside visits, many phone calls, cards, and gifts of soup and delicious food. I really appreciated the postman bringing my mail and the cheerful assistance of the garbage collectors. I find great pleasure in watching the blue jays, chickadees, woodpeckers and other birds enjoying the bird feeders on my weeping birch tree.

I wish you all a Happy New Year! -Wendy Davis



## Selfless Students in Belgravia

Students of Belgravia School spent the holiday season helping others within the Edmonton area. We students at Belgravia have been learning about Acts of Kindness and how we can help others around us and those who are less fortunate. We found and researched charities and foundations to support like Toy Mountain, the Stollery Children's Hospital, the Mustard Seed and the Edmonton Humane Society. It was a huge success! We were able to help many people and animals in our city over this past winter holiday season. I hope that everyone will continue to support those in need in any way possible. A huge thank you to the Parent Council Committee and Belgravia families who supported our causes. None of this would have been possible without your generous donations to each of our elementary school classrooms. Stay healthy and stay safe.

By Catherine Fjeldheim (Grade 5)

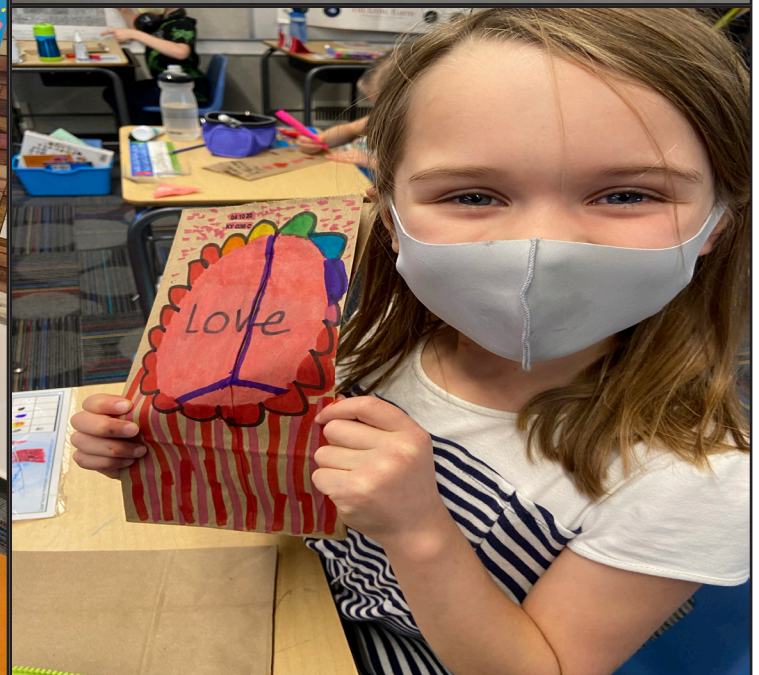


Dear Belgravia parent council,  
Hi my name is Russell I am in grade 3 at Belgravia elementary!

Our class is collecting donations to give to the Edmonton Toy Mountain. The Toy Mountain is a mountain made out of toys.

This year more than ever people are losing their jobs, I am asking for a donation from Belgravia parent council to help us make children happy, would you please consider donating some money to help us?

Sincerely, Russell





## Outdoor Winter Opportunities

In addition to exploring the City of Edmonton's vast network of Parks, River Valley Trails, Dog Off-leash Sites, Outdoor Skating Rinks, and Tobogganing/Sledding Hills, here are some unique activities to get outdoors safely this winter, provided by Edmonton Neighbourhood Services:

**Cross Country Skiing:** Edmonton is home to some of the most scenic (and FREE) cross-country ski trails in Alberta. The City of Edmonton and its community partners groom over 40 kilometres of trails for skate and classic skiing and you can ski your own ungroomed tracks into ravines, open areas and parks. Trail info: [https://www.edmonton.ca/activities\\_parks\\_recreation/cross-country-skiing.aspx](https://www.edmonton.ca/activities_parks_recreation/cross-country-skiing.aspx)

**Snowshoeing:** Most City trails are packed down, so snowshoes perform best in areas that are open, after a good snowfall and off the beaten track.

**Stargaze:** Aurora Watch - get email notifications from the U of A on the nights when the conditions for northern lights (aurora borealis) are most likely.  
<https://www.ualberta.ca/institute-for-space-science-exploration-and-technology/outreach/aurorawatch.html>

**Outdoor Public Art:** The City of Edmonton Public Art Collection contains more than 200 art works, many of which are located outdoors. Explore the interactive public art map in Edmonton to find out where these gems are (including Belgravia's Arts Park)! Link: <http://edmontonpublicart.ca/%23!/map/>

**Winterscape Your Yard:** Winter in Edmonton can be fun and beautiful at the same time! The Winterscapes photo contest is a great place to showcase gardens, art and play in the winter. A winterscape is a way of decorating your wintry yards and landscapes using things like snow, ice, natural objects, and lights. You can create a winterscape in your front yard, community hall, office/business building or school. Here is your chance to spread the winter cheer to your neighbors by participating in the Front Yards in Bloom: Winterscapes contest in 2021: January 18 - February 28.  
[https://www.edmonton.ca/programs\\_services/landscaping\\_gardening/winterscapes.aspx](https://www.edmonton.ca/programs_services/landscaping_gardening/winterscapes.aspx)

**Maze:** Set up an obstacle course or maze in your backyard made of snow and other objects. Have members of your household go through the course or maze.

**Snow Painting:** Use spray bottles or squirt bottles, fill them with water and food colouring. Build snow sculptures and then use the coloured water to paint them.

**Ice Bowling:** Bowling with frozen water balloons - Fill balloons with water (option to colour the water), let them freeze, option to use with balloon still on or pop pull the balloon off, use frozen balls for outdoor bowling.

**Snow Lantern:** To build a snow lantern, you pile snowballs into the shape of a hollow cone and place a light inside. This is a holiday tradition in Sweden, Finland and Norway.

**Skating:** Edmonton has various outdoor skating rinks across the city; some rinks are City-operated while others are community-operated. Please check current COVID-19 restrictions before visiting and follow all posted signs while on-site.

Need skate tags to use the BCL's skating rink? Contact [membership@belgraviaedmonton.ca](mailto:membership@belgraviaedmonton.ca) to purchase your membership and receive this year's skate tags!



## Meet Your Neighbour Block Connector Spotlight: Jonathan Sharek

I have lived in Belgravia for 8 years with my wife Toscha and son McKinley. It's a great community and I was very proud to be a member of the Hall Renewal Committee Project!

More recently I have decided to become a block connector in an effort to help grow connections in our immediate area as well as Belgravia as a whole. With so many of us at home, it felt like the ideal time to try! Because the neighbourhood borders on the river valley and major thoroughfares, I find that it actually has a small town feel.

Since becoming a block connector I've found more chances to talk to my neighbours and review some of the local problems that have come up. This has also led to more occasions (safely socially distance) for some great walks, drinks, and music! Over this slower pandemic time, I started a daily walk goal of 10,000 steps, exploring a lot of Belgravia, Windsor Park, McKernan, Garneau, and Downtown.

I am a big fan of podcasts and spent much of this time listening to shows on politics and music. Aside from my regular job as a high school social and music teacher, I am a doctoral student in Educational Policy studies at the U of A. In 2020 I passed the candidacy exam, and I'm currently preparing to conduct research for the final study and dissertation!



### Riding out COVID-19 with Edmonton Public Libraries!

EPL has an extensive collection of online resources.

Learn! Listen! Read! Watch!

For more information visit [epl.ca](http://epl.ca)

Popular digital resources from 2020

**OverDrive:** Borrow & enjoy free eBooks, audiobooks, & more!

**PressReader:** Read newspapers & magazines from around the world and in various languages!

**Kanopy:** Kanopy is home to documentaries, Canadian cinema, independent film, world cinema and classic movies.

**Lynda.com:** Thousands of courses available! Tackle new software, improve business skills and digital competencies, & more!

**Solaro:** Easily access Alberta-specific curriculum (grades 3-12) course lessons and quick quizzes.



**Heather  
McPherson**  
Member of Parliament  
Edmonton Strathcona

#### Contact my office for assistance with:

- Employment Insurance
- Old Age Pensions
- Canada Revenue Agency
- Citizenship & Immigration
- Canada Student Loans
- Celebratory Messages

**780-495-8404**

10045 81 Ave T6E1W7



[heather.mcperson@parl.gc.ca](mailto:heather.mcperson@parl.gc.ca)

Follow on



Visit my website at [www.heathermcperson.ndp.ca](http://www.heathermcperson.ndp.ca)

# the belgravian

Published by Belgravia Community League, the belgravian newsletter reports on community news, programs and events in and around the Belgravia area.

## Frequency

We publish 10 issues per year

## Monthly Distribution

We deliver approximately 960 copies to homes in Belgravia. Copies are also available at Gracious Goods and Belgravia Hub

## Online

<https://belgraviaedmonton.ca/newsletters/>

## Advertising

Advertisements should be submitted to [adsmanager@belgraviaedmonton.ca](mailto:adsmanager@belgraviaedmonton.ca)  
Advertising for businesses located outside of Belgravia, McKernan, and Windsor Park are limited to business card size.

## Editorial Submission

Submission are subject to editorial discretion and available space. To submit an article email [editor@belgraviaedmonton.ca](mailto:editor@belgraviaedmonton.ca)

## Schedule

Issue	Content Deadline	Delivery
September 2020	Aug 19	Aug 29/30
October 2020	Sep 16	Sept 26/27
November 2020	Oct 21	Oct 31/Nov 1
December 2020	Nov 18	Nov 28/29
Jan/Feb 2021	Jan 20	Jan 30/31
March 2021	Feb 17	Feb 27/28
April 2021	Mar 17	Mar 27/28
May 2021	Apr 14	Apr 24/25
June 2021	May 19	May 29/30
July/Aug 2021	June 16	June 26/27

## Advertise with us!

### File types

We accept ads in PDF, JPG and TIF file formats

### Image resolution

Images must be 200 dpi at 100% (full size)

### Payment methods

We accept payment by cheque payable to the Belgravia Community League

### Rates per issue

We offer a 10% discount for multiple ads paid in advance

### Pricing

Ad Size	BCL member	Non-member
Business card	\$25	\$50
¼ page	\$50	\$75
½ page	\$75	\$100

## Contact

[adsmanager@belgraviaedmonton.ca](mailto:adsmanager@belgraviaedmonton.ca)

## Ad Sizes

**Business Card Ad**  
9.5 cm x 6.4 cm

**¼ Page Ad**  
9.5 cm x 12.7 cm

(Not available to businesses outside of Belgravia, McKernan and Windsor Park)

**½ Page Ad**  
19 cm x 12.7 cm

(Not available to businesses outside of Belgravia, McKernan and Windsor Park)



## Belmac Neighbours Submission: Metro 78

Brought to you by BelMac Neighbours, a group of people who have been working with the community leagues, city planners, and city councillor Ben Henderson for the past 1+ years to find solutions that work for all of us.

### ARP Area Redevelopment Plan

**Belgravia McKernan ARP** passed in 2013 to:  
"enhance and strengthen the local character of these neighbourhoods, while capitalizing on the presence of the Belgravia McKernan LRT Station through Transit Oriented Development (TOD) and encouraging infill"

[tinyurl.com/BelMacARP](https://tinyurl.com/BelMacARP)



### Our Neighbourhood

**"Densities in areas should not exceed 4 storeys,**  
excepting the gateway location at University Avenue  
where 6 storeys will be allowed"

"The interior of the community is not appropriate for  
significant change... will be limited to small scale  
forms of infill"

[tinyurl.com/ARP-Guiding-Principle](https://tinyurl.com/ARP-Guiding-Principle)



### The Proposal

#### Two 6-Storey buildings on the 78th Ave cul-de-sac

- 142 units
- a new North-South lane to connect 78th Avenue to the back alleys once the turnaround is removed
- a Mid-Block Access way between the buildings ("plaza") to access the LRT station and the 114 St crosswalk
- justifying 6 storeys as the crosswalk is a community "gateway"

[tinyurl.com/Metro78-YEG](https://tinyurl.com/Metro78-YEG)



### Community Amenity Contribution (CAC)

#### To rezone from RA7 to DC2 (6 storeys and Floor Area Ratio 4.0)

In return, the developer is required to provide \$820,000 in amenities to benefit area residents. <https://tinyurl.com/YEG-CAC>

CAC's include: public art, upgrades to parks and community leagues, contributions to child care services, etc

The developer has proposed:

- landscaping on public areas and Mid-Block Access ("plaza")
- new access to back alley (North-South)
- 8 family units (3-bedrooms)



### Our Concerns

**6-Storey Height** - beyond what would "respect the existing scale, form, massing, and style of the neighbourhood through height limits and building design" (ARP page 42)

- the cul de sac on 78th Avenue is not a "gateway" to the neighbourhood. It is small-scale residential and difficult to access, with no parking
- Insufficient number of 2-3 bedroom family units - the only CAC
- Mid-Block Access ("plaza") is already required, NOT an amenity



### Have Your Say!

#### If you would rather see:

- improvements to Charles Simmonds Park
- more family units
- 4 storeys
- A bike Park-n-Ride

Fill out the survey below, and contact:

the City Planner: [Marty.Vasquez@edmonton.ca](mailto:Marty.Vasquez@edmonton.ca)

our City Councillor: [Ben.Henderson@edmonton.ca](mailto:Ben.Henderson@edmonton.ca)



BelMac Neighbours

**PLEASE TAKE A MINUTE TO COMPLETE THE BCL POLL:**

<https://tinyurl.com/BCL-Poll>

Public consultation expected to be coming soon in 2021

For ALL Belgravia and McKernan residents

## Junior Belgravians! This page is just for you!

### Valentine's Day Word (un)Scramble

Unscramble the words below to find the secret message.

uaeB  \_ \_ \_

coCotaleh  \_ \_ \_ \_ \_

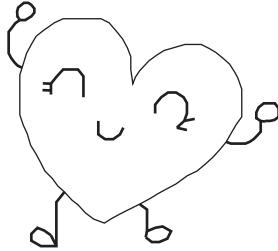
namecoR  \_ \_ \_ \_

ssiK  \_ \_

dynaC  \_ \_

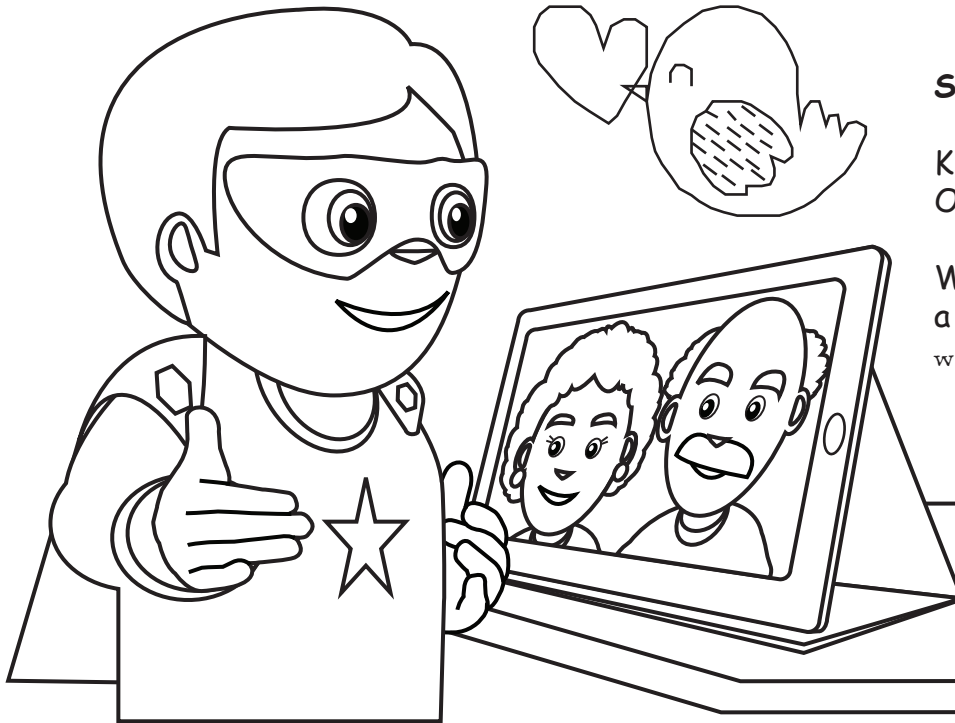
relowF  \_ \_ \_

Answer \_ \_ \_ \_ \_



**Funny Fill-in:** Ask someone for words to fill in the paragraph below. Then read together for a laugh!

To celebrate Valentine's Day, my class and I went to a candy shop by                     . When we arrived, we were greeted by a(an)                      mode of transportation                      adjective                      animal named                      name                      same name said, "Today, I will teach you how to make                      something messy to make. We were ecstatic!                      same name used her                      a body part to dip                      a fruit into                      messy candy then gently placed them on a drying tray. Finally, it was our turn to make our own                      something messy to make. At the end of the field trip, everyone was covered in                      messy candy. It was the best field trip ever!



### Silly Jokes:

Knock knock. Who's there?  
Olive. Olive who? Olive you!

Why didn't the skeleton give out a Valentine's Day card? His heart wasn't in it!

## Spend time with your family.

Tip: Enjoy activities at home with your family.

If you can't be with them, call, text or video chat to stay in touch





## Metro 78 Survey (11416 – 11423 78 Ave NW)

**Belgravia Community League** is conducting a survey on the proposed Metro 78 Development. Feedback will help form the Community League's stance and negotiation priorities. For questions, please contact Planning & Place Director at [planning@belgraviaedmonton.ca](mailto:planning@belgraviaedmonton.ca)



### Project Summary

A developer is proposing two 6-storey developments with approx. 71 units each on 4 lots along 78 Ave NW & the LRT (11416 – 11423) The development is intended to consist of rental units, and also proposes the following:

- Removal of the turnaround + new laneway access
- New public plaza between buildings
- Limited visitor & Handicap parking only; no resident parking
- 10 years of subsidized transit passes

Additional details are available at [edmonton.ca/metro78](http://edmonton.ca/metro78)

Surveys can be dropped off in the mailbox at the Belgravia Community League (11540 - 73 Ave NW). Feel free to secure additional page(s) to share more feedback, questions or concerns.

**Are there elements of the building you like?**

**Are there elements you dislike?**

_____	_____
_____	_____

The sites currently contain single detached houses permitted to a max 2-1/2 storey height (8.9m). The developer is proposing 6-story buildings while the Mckernan/Belgravia Area Redevelopment Plan anticipates a maximum 4-stories. In your opinion, should maximum height for this site be:

- ☐ 1 – 3 Storeys    ☐ 4 Storeys    ☐ 5 Storeys    ☐ 6 Storeys    ☐ 7+ Storeys

Currently the proposal is intended for residential use only. Would you be interested in seeing any commercial uses included in the final design?

- ☐ NO – Keep It Residential    ☐ YES – Community-focused Services (e.g. Daycare)
- ☐ YES – Small Scale Commercial (e.g. Café)    ☐ Other, Additional details for your choosing:

\_\_\_\_\_

\_\_\_\_\_

**This proposal sits immediately next to the North access point of the McKernan/Belgravia LRT station. Should this or similar developments near public transit stations be subject to any unique expectations or considerations given the location?**

---

---

---

**Overall, how would you rate vehicle traffic and congestion for getting in and out of Belgravia? Are particular times worse than others?**

---

---

---

**The current proposal provides no regular parking stalls for residents. Visitor stalls and handicap stalls are expected. Residents will NOT meet parking pass program requirements for on-street parking, and the developer is expected to provide 10 years of subsidized transit passes. The developer expects tenants will be car-less and shouldn't impact area traffic and congestion. Overall do you:**

☐ SUPPORT developer's plans regarding parking

☐ Other

☐ OPPOSE developer's plans regarding parking

*Additional details for your choosing:*

---

---

**Current parking restrictions limit on-street parking to 2 hours from 8am - 6pm Monday - Friday without permits. Permits are only granted to residents in buildings under 4-storeys in height, so tenants of the proposal would not qualify. How do you feel about the parking restrictions currently in effect?**

☐ Parking Restrictions should remain the same

☐ Parking Restrictions should be loosened

☐ Parking Restrictions should be harsher

*Additional details for your choosing:*

---

---

**If approved, the developer will be required to contribute funds for project(s) that benefit the Community (e.g. plazas, park improvements, artwork, multi-bedroom family units, league facility improvements, etc.) What project(s)/improvement(s) would you like to see receiving funding?**

---

---

---

**The developer is proposing to develop a public plaza space between the two buildings, which may include items & furnishings (e.g. seating, lighting, art/play spaces, etc.)**

**What items you would like to see included?**

**What items you would like to see excluded?**

---

---