



# the belgravian

April 2019

## Belgravia Community Hall

11540 73 Ave

Edmonton, AB T6G 0G1

BCL is a member of the Edmonton Federation of Community Leagues ([www.efcl.org](http://www.efcl.org))

## Visit us online:

BCL website: <https://belgraviaedmonton.ca/>

Twitter: @belgraviaYEG

Facebook: belgraviaedmonton

*the belgravian*: <http://belgraviaedmonton.ca/newsletters/>

## Advertise in *the belgravian*:

Please contact:

[adsmanager@belgraviaedmonton.ca](mailto:adsmanager@belgraviaedmonton.ca)

## Next Submission Deadline:

April 19, 2019

**Banner Photo:** Belgravia Hustle—Lemonade stand and finding shade in the playgund

## Save the Date!

Belgravia Hustle is back: April 27<sup>th</sup>

Be at the BCL at 11:30am for a day of fitness and fun, with walks and runs for everyone. In addition, there will be games, food and beer.

The event is organized by the Playschool committee and Multisportscanada. This event will help raise funds for the Belgravia Co-operative Playschool.

To register/volunteer/sponsor go to: [www.belgraviahustle.com](http://www.belgraviahustle.com)





**Saturday April 27th**

## **Belgravia Hustle & Volunteer Appreciation Lunch**

A fundraiser for the **Belgravia Cooperative Playschool**,  
a program of Belgravia Community League

### **Run & Walk Events**

**Run/Walk: 2 km, 5 km or 10 km or join the 3 km dog walk!**

**When:** Races start at 12 pm, late registration from 11 am

**Where:** Meet at the Belgravia Community Hall / Belgravia Arts park

**Registration Fee:** 2K Family Fun Run and 3K Dog Walk - \$15

5K and 10K run/walk - \$30

\*register by March 25<sup>th</sup> to save \$5

Visit [www.belgraviahustle.com](http://www.belgraviahustle.com) to register!

The race brought to you by Trevor Soll, Multisportscanada

### **Great food and drinks—games and fun!**



2017 Belgravia Hustle and Volunteer Appreciation Event servers:  
Marcel Huculak, Jeanette Boman and Christina Lau Hoang

A Volunteer Appreciation Lunch for this past year's BCL volunteers will be served at noon from the locally owned Pho Boy Vietnamese Kitchen. If you are one of those volunteers, keep an eye out for your e-mail RSVP invitation.

Everyone else attending the Belgravia Hustle fundraising event will be invited to purchase meal tickets (Adults \$12; Elementary School Aged children \$6; and playschool aged children, Free) for such specialty items as Pho Soup, Vermicelli bowl, green onion cakes, salad rolls and crispy fried spring rolls (including vegetarian and gluten sensitive options)

With a Vietnamese theme this year, you can look forward to mango & cocoanut ice cream for dessert, Vietnamese coffee and green tea and, maybe, we're working on it ... some Vietnamese beer in the upper hall Beer Garden.

# *the belgravian*

## **Published by the Belgravia Community League**

*the belgravian* reports on community news, programs and events within the Belgravia area.

## **Frequency:**

We publish ten issues per year.

## **Monthly distribution**

We deliver approximately 960 copies to homes in Belgravia.

Copies are also available at Gracious Goods and Belgravia Hub

## **Advertising**

Advertising for businesses located outside Belgravia, McKernan, and Windor Park are limited to business card size.

## **Editorial submissions**

Submissions are subject to editorial discretion and available space. To submit an article please email [communications@belgraviaedmonton.ca](mailto:communications@belgraviaedmonton.ca)

## **Online archive**

[belgraviaedmonton.ca/newsletters](http://belgraviaedmonton.ca/newsletters)

## **2018–2019 BCL Board & Related Committee Chairs**

Past president	Kevin Klein	<a href="mailto:pastpresident@belgraviaedmonton.ca">pastpresident@belgraviaedmonton.ca</a>
President	Michael Cohen	<a href="mailto:president@belgraviaedmonton.ca">president@belgraviaedmonton.ca</a>
Vice president	Cory Dawson	<a href="mailto:vicepresident@belgraviaedmonton.ca">vicepresident@belgraviaedmonton.ca</a>
Secretary	Joanne Wynn	<a href="mailto:secretary@belgraviaedmonton.ca">secretary@belgraviaedmonton.ca</a>
Treasurer	Barry Edgar	<a href="mailto:treasure@belgraviaedmonton.ca">treasure@belgraviaedmonton.ca</a>
Memberships	Susan Andrew	<a href="mailto:membership@belgraviaedmonton.ca">membership@belgraviaedmonton.ca</a>
Facilities	Marcel Huculak	<a href="mailto:facilities@belgraviaedmonton.ca">facilities@belgraviaedmonton.ca</a>
Hall rental coordinator	Jeanette Boman	<a href="mailto:hallrental@belgraviaedmonton.ca">hallrental@belgraviaedmonton.ca</a>
Rink manager	Jim Sawada	<a href="mailto:rinkmanager@belgraviaedmonton.ca">rinkmanager@belgraviaedmonton.ca</a>
Arts park team leader	Kathy Goble	<a href="mailto:facilities@belgraviaedmonton.ca">facilities@belgraviaedmonton.ca</a>
Programs	Cameron McGregor	<a href="mailto:programs@belgraviaedmonton.ca">programs@belgraviaedmonton.ca</a>
Belgravia playschool teacher	Monika Fouad	<a href="mailto:playschool@belgraviaedmonton.ca">playschool@belgraviaedmonton.ca</a>
Made in Belgravia	Jeanette Boman	<a href="mailto:mib@belgraviaedmonton.ca">mib@belgraviaedmonton.ca</a>
Pumpkin party, BCL BBQ, Casino	Reg & Jane Norby	<a href="mailto:norby@shaw.ca">norby@shaw.ca</a>
Belmac soccer coordinator	Carley Haynes	<a href="mailto:belmac@belgraviaedmonton.ca">belmac@belgraviaedmonton.ca</a>
Communications	Imogen Sellman	<a href="mailto:communications@belgraviaedmonton.ca">communications@belgraviaedmonton.ca</a>
Belgravian editor	Catherine Caufield	<a href="mailto:editor@belgraviaedmonton.ca">editor@belgraviaedmonton.ca</a>
Ads manager	Lena Jones	<a href="mailto:adsmanager@belgraviaedmonton.ca">adsmanager@belgraviaedmonton.ca</a>
Distribution team leader	Susanne Rowe	<a href="mailto:editor@belgraviaedmonton.ca">editor@belgraviaedmonton.ca</a>
BCL web page manager	Tim Janzen	<a href="mailto:webmaster@belgraviaedmonton.ca">webmaster@belgraviaedmonton.ca</a>
Planning & place	BCL Board	<a href="mailto:planning@belgraviaedmonton.ca">planning@belgraviaedmonton.ca</a>
transportation committee	Jordan Hoffart	<a href="mailto:transportation@belgraviaedmonton.ca">transportation@belgraviaedmonton.ca</a>
Belgravia watch	Richard Law	<a href="mailto:belgraviawatch@gmail.com">belgraviawatch@gmail.com</a>
Neighbourhood Resource coordinator	Kate Russell	<a href="mailto:kate.russell@edmonton.ca">kate.russell@edmonton.ca</a>
Belgravia Elementary school Liaison	Michael Cohen	<a href="mailto:president@belgraviaedmonton.ca">president@belgraviaedmonton.ca</a>
U of A community consultation		<a href="mailto:info@belgraviaedmonton.ca">info@belgraviaedmonton.ca</a>
Keillor Point inquiries	Roger Laing	<a href="mailto:keillor_point@belgraviaedmonton.ca">keillor_point@belgraviaedmonton.ca</a>

# President's Message

## Our new community hall, going on three

It's now approaching three years since the official opening of our renovated and expanded community league hall in September 2016. So it seems like a good time to provide an update on the hall's finances, operations, and future plans. In brief I can say that the hall has been a great success and will serve our community well for decades to come.

Those who are new to Belgravia would find it hard to picture Belgravia Park as it looked before the reconstruction. Part of the old hall's foundation and internal structure remain, but its footprint was increased by one third and a beautiful new exterior and sweeping roof were added. The total cost of the project was \$1.8 million, of which \$900,000 was raised from seven grants from the municipal, provincial and federal governments, \$300,000 from casinos, and \$300,000 from donations from Belgravia residents. The next time you are in the upper hall, please take a moment to view the beautiful Donor Tree, designed and produced by Belgravia resident Wei Yew, on the wall beside the fireplace. The hall renewal project was led fearlessly throughout by Kevin Taft, with dedicated support from many volunteers on various committees.

The hall was completed on time and on budget, is fully paid for, and continues to be financially stable. The operations and maintenance costs for 2018, including insurance, cleaning, heating, etc. were \$23,300. Revenues from rentals and programs were \$13,000 and \$10,700, respectively. The solar panels generated \$650 in electricity cost savings. Mechanically and structurally, the hall is performing well. Several deficiencies were addressed during the post-construction warranty phase. The security system is now functioning reliably after several tweaks and repairs. We are working to fix an ice damming issue on one corner of the roof and to optimize the calibration and maintenance of the hall's three furnaces. Many thanks to Kevin Taft and our Facilities Director, Marcel Huculak, for staying on top of the issues that have come up.

A major change to the anticipated operation of the hall is that Belgravia Out of School Care (BOSC) did not return after the reopening. BOSC was extensively consulted on the new hall's design but ultimately chose to remain in its interim location in the Vietnamese Alliance Church because of greater available space. In 2018 operation of the out of school care program was transferred to the Greenfield School Age Day Care Association, which also chose to remain at the church. The absence of the out of school care program has resulted in reduced revenue but opened up a large amount of time and space for other programs in the lower hall.

A list of the programs operating at the hall can be found on our website and in most issues of *The Belgravian*. I encourage everyone to participate in these programs and/or to suggest new ones. There are still lots of available time slots in the upper and lower halls and so much more that can be offered to build our community.

The BCL board is working to expand use of the community living room in the upper hall. The area features comfortable seating, a fireplace, and books and magazines. We hope to have a volunteer Hall Host Team working soon so BCL members can come to the living room, buy memberships, learn about rentals and programs, enjoy a hot drink, and plot themselves on our Where in the World interactive map. Eventually we look forward to hiring a part-time manager to work out of the upstairs office and assist with rentals, hosting, and other duties. A big thanks to our Programs Director, Cam MacGregor, and Hall Rental Coordinator, Jeanette Boman, for their very hard work in managing programs and rentals.

## The Belgravia Abundant Community

At the last community league board meeting, we agreed to develop an abundant community framework in our neighbourhood based on improving our connections as neighbours and by harnessing the vast array of skills here.

An Abundant Communities initiative has been promoted by the City of Edmonton as a way of strengthening citizenship and good neighbouring in the City's 157 community leagues. About 12% of communities in Edmonton are currently involved. How many of your neighbours do you know? How many can you depend on when you need help? If you would like to improve your own ability to be a good neighbour, this is the initiative for you.

We plan to start by developing a Support Team, about 6 to 8 Belgravians. They will start by talking with city staff and other communities currently pursuing their own abundant community. The team will manage the process of connecting our community at the block level and establish the base on which to build a stronger, more resilient community.

Interested? Please give Cam McGregor, Programs a note at: [programs@belgraviaedmonton.ca](mailto:programs@belgraviaedmonton.ca)

### Bottle Drive

To benefit  
**Belgravia School**  
and  
**Belgravia Cooperative  
Playschool**

**Sunday, April 28**

**Please mark your calendar  
and save your  
recyclable beverage containers  
for us!**

Place containers in front of your house



**Belgravia**  
SCHOOL

by 9:00 AM

*Thank-you for supporting  
our community school!*

## Neighbourhood Watch

Spring is here and along with the warmth there is an uptick in people wandering our alleys and streets looking for opportunities to help themselves to bikes, cars, and in some cases enter garages/houses/apartments.

The biggest effect on reducing events is having neighbours talk to each other.

To reduce the opportunists reason to be here, there are some simple steps:

Do not leave bottles in your back alley at any time.

Report to the police if you see people in the alley or on the street. If you are comfortable speaking to them, advise them they are being watched and reports and pictures are sent weekly to the police on all activities in the neighbourhood. In the past people I have encountered and "educated" generally do not return.

Alert your neighbours to be aware, and of course empty/lock your cars, lock your home, and garage. Choose bike locks that are almost indestructible, and use them even if your garage is locked.

A current breakin this month at a construction site had framing tools and a compressor stolen, it was cabled to the side of the house. The cable was easily cut. They came back two nights later and stole the generator inside the house.

Talk to your neighbours, Take different routes in and out of the area.

Installing internet cameras has helped in identifying when and where they are prowling. It gives you an indication if people are around, being alerted you can now take action.

There are 6 communities sharing information. Currently our combined efforts have seen a reduction in events over the last three months. Shared awareness works!

Contact info: Current events Police 911, other complaints Police 780-423-4567

Parks 311, and copy any information about events to [belgraviawatch@gmail.com](mailto:belgraviawatch@gmail.com)

## Spring 2019 BCL Programs at the Hall

Program/ Location	Day/Dates	BCL Member Fee	Register With ...
<b>Soapstone Carving</b> Leader: Pat Galbraith Location: Upper Hall	<b>Mondays 7 – 9 pm</b> April 1 to June 17 (no class Apr. 22 or May 20)	\$120 No drop ins	programs@belgraviaedmonton.ca
<b>Tuesday AM Mat Yoga</b> (Minimum 7) Leader: Elise Ure Location: Upper Hall	<b>Tuesdays 10:20 – 11:20 am</b> April 9 to May 28 (8 Sessions)	\$80 Drop ins: \$15	programs@belgraviaedmonton.ca
<b>Tuesday AM Chair Yoga</b> (Minimum 7) Leader: Elise Ure Location: Upper Hall	<b>Tuesdays 11:30 – 12:30 pm</b> April 9 to May 28 (8 Sessions)	\$80 Drop ins: \$15	programs@belgraviaedmonton.ca
<b>BCL Knitters</b> Location: Upper Hall Community Living Room	<b>Tuesdays 7 – 9 pm</b> Ongoing	BCL Membership	programs@belgraviaedmonton.ca
<b>Belgravia Walking Club</b> Leader: Cam McGregor Location: Meet at Upper Hall	<b>Wednesdays 10 – 12 pm</b> Ongoing	Free	programs@belgraviaedmonton.ca
<b>Zumba</b> Leader: Genelle Routhier Location: Lower Hall	<b>Thursdays 6 – 7 pm</b> April 11 to May 30 (8 Sessions)	\$80 Drop ins \$15	programs@belgraviaedmonton.ca
<b>Friday AM Mat Yoga</b> (Minimum 7) Leader: Elise Ure Location: Upper Hall	<b>Fridays 10 – 11 am</b> April 12 to June 7 (8 sessions - no class Apr. 19)	\$80 Drop ins \$15	programs@belgraviaedmonton.ca
<b>Sit &amp; Be Fit</b> (Minimum 7) Leader: Elise Ure Location: Lower Hall	<b>Fridays 11:05 am – 12:05 pm</b> April 12 to June 7 (8 Sessions - no class Apr. 19)	\$80 Drop ins \$15	programs@belgraviaedmonton.ca
<b>Other Spring 2019 Programs at the Hall</b>			
<b>Guides</b> Location: Lower Hall	<b>Mondays 6:15 – 8:15 pm</b>	For Information, contact Tonya Wolfe	tonya.wolfe@gmail.com
<b>Tuesday AM Boot Camp</b> Leader: Caitlin Banks Lower Hall	<b>Tuesdays 8:30 – 9:30 am</b> March 12 – May 14 (10 sessions)	For Information, contact Caitlin Banks	caitlinbanks@gmail.com
<b>Wednesday PM Boot Camp</b> (Minimum 6) Leader: Caitlin Banks Lower Hall	<b>Wednesdays 7 – 8 pm</b> April 3 – May 22 (8 sessions)	For Information, contact Caitlin Banks	caitlinbanks@gmail.com
<b>Sportball</b>	<b>Sundays</b> April 7 to June 23 (No classes April 21 and May 19)	For information, contact Miranda Dawson	information: mirandaedawson@gmail.com register: <a href="https://goo.gl/forms/FikX0EAOE5tfZ5Gf2">https://goo.gl/forms/FikX0EAOE5tfZ5Gf2</a>

## Spring Programs in Belgravia

BCL is offering a number of classes to interest you this spring – please see the schedule on the previous page. Here are some more details about what is on offer!

We are offering an exceptional craft program in soapstone carving. The classes are lead by Pat Galbraith, a celebrated sculptor in Alberta, and a member of our community. No experience is necessary to enjoy and get fulfilment from the class. Pat is a very engaging instructor as attested by her many students both in Belgravia and across the city.

We will be offering several fitness programs including yoga, dance and flexibility improvement:

- Mat yoga will be offered on Tuesdays and Fridays. It is a active class and will keep you supple and ready for the challenges of summer. Elise Ure, your instructor, is a key part of our fitness programs and has worked in our community for the last two years.
- Chair yoga will be offered on Tuesdays. It is an excellent strength and flexibility program but is less demanding than mat yoga. Chairs and other supports are used as aids to balance and to support movement. Elise is a master at helping you reach your optimal stretch and pose.
- The Belgravia Walking Club is a joyous group of neighbours who like to walk together - rain or shine. We start at the community hall and generally end up for great conversation at Gracious Goods. Spring is the best time to walk around our neighbourhood - the flowers can be breathtaking! Get outside and be part of it!
- Zumba is offered in the early evening on Thursdays. It is a rigorous dance course for all ages. Genelle Routhier, our instructor, will get your toes tapping and your spirit flowing. Genelle has instructed our last two classes so she knows us 😊
- Sit and Be Fit is offered on Fridays. Elise uses various fitness support materials to gently get you to reach just a bit further and to strengthen core, arms and legs. There is terrific chatter in this class guaranteed to keep you interested.

If you would like two times a week, why not take Chair Yoga with Sit and Be Fit or the two mat yoga classes? You won't regret it!

We will not be offering Strength and Stretch on Mondays because Tara Mayne, our instructor, is unavailable. We plan to offer this popular class again next fall.

Those courses listed as Community League classes need about 7 people each to make them fun. If we can't get that number we will cancel the class and try again in the fall. Registration is on the first day of each class so please mark it in your calendars (or, if you can't make it to the first class, please email [programs@belgraviaedmonton.ca](mailto:programs@belgraviaedmonton.ca)). You can also give a class a try with a drop in at \$15/session.

For information on Boot Camp, Sportball and Guides, please contact the program through the email address provided.

Hope to see you at the hall!

### City of Edmonton Summer Day Camps

Make new friends, learn new skills and have a blast at a City of Edmonton day camp! We offer a wide range of day camps for children and youth at a number of city-wide locations, including the River Valley, City Recreation Centres, the Edmonton Valley Zoo, the Muttart and more. Registration now open!

More details: <https://movelearnplay.edmonton.ca/COE/public/category/browse/PROGCAMX905>

## Cooking Up a Story @ Belgravia Community League

Find yourself in the delicious world of storytelling! Our daily snack recipes will be inspired by the stories we read. In addition to cooking, participants will enjoy a cup of games, a tablespoon of songs, and a pinch of crafts. It's a recipe for fun. Every day is a new adventure!

Ages: 4 – 6

Dates: 6th Aug - 9th Aug

Price: \$78.40

See poster below for more details!

EIGHBOURHOOD SUMMER DAYCAMP 

# COOKING UP A STORY



DATE	TIME	AGES	COURSE CODE	COST
Tuesday - Friday August 6-August 9	1:30PM - 4:00PM	4-6 years	657274	\$78.40

### Belgravia Community League

11540 - 73 Avenue

Find yourself in the delicious world of storytelling! Our daily snack recipes will be inspired by the stories we read. In addition to cooking, participants will enjoy a cup of games, a tablespoon of songs, and a pinch of crafts. It's a recipe for fun. Every day is a new adventure!

Registration Now Open!

To Register:

- Call 311
- Online at [movelearnplay.edmonton.ca](http://movelearnplay.edmonton.ca)
- In person at any City of Edmonton Recreation and Leisure Centre

Thank you to the Belgravia Community League for access to their facility



### ST. GEORGE'S ANGLICAN CHURCH, 11733-87 AVE.

Has concert/recital space for music teachers and students

- Yamaha C2 Grand Piano
- Beautiful, intimate setting with seating capacity of 150
- Good acoustics
- Proximity to U of A Campus
- Intermission/reception space available

For more information, please contact David Cass  
([d.cass@ualberta.ca](mailto:d.cass@ualberta.ca))



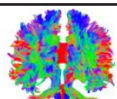
## Made in Belgravia: Hatching and Raising Your own Canaries

Many of you may already know that Wendy Davis, an avid bird lover has hatched and cared for canaries in her Belgravia home for many years. This spring her baby canaries have begun to hatch and she looks forward to sharing all she knows about canaries with us. She'll bring some of her newly hatched babies to the session and talk about how and why she started raising canaries. Adults and children alike are welcome to come and share their own bird stories in this session. Following the presentation there will be tea, Devonshire Crème and scones for all.

**When:** April 6, 2018 (2 – 4 pm)

**Where:** Upper BCL Hall

**Admission is Free;** however, to help us prepare for the session we would appreciate an RSVP to: [mib@belgraviaedmonton.ca](mailto:mib@belgraviaedmonton.ca)



Interested in having your **brain** scanned for research?

We are looking for **healthy volunteers** (ages 5-95) to undergo an **MRI of their brain** for research

If you would like to learn more, please **contact us** by  
e-mail: [brainmri@ualberta.ca](mailto:brainmri@ualberta.ca)  
or phone: (780)983-7232



## Belgravia School Page

Belgravia students and staff had an exciting month with lots of in and out-of-school field-trips, including making glass art, a Ukrainian Shumka Dancers performance at the Jubilee, skating, and more. Here are photos from some of those activities.



Grades 1–6 students watching *Matilda The Musical* at the Citadel Theatre.



Reading buddy field trip at Victoria Oval: George, William, and Matt skate together.



Grade 1 students Selen and Madeline during a field trip to the Belgravia skating rink.



Belgravia Grade 6 student Alex (back center) and some of his *Matilda* castmates.



## MoveLearnPlay.edmonton.ca is live!

MoveLearnPlay.edmonton.ca replaces 'e-reg'. It's a new City of Edmonton recreation, attractions and community portal that makes it even easier for you to find drop-in activities, register for programs and book spaces online.



Volunteer extraordinaire: Eric Tebby digging out one of a number of blocked drains in Belgravia this past week.

Many thanks to Eric and all our Belgravia neighbours who clear ice from drains at this time of year!

**WE HAVE MOVED**

**STRATHCONA REGISTRY**

**HOURS OF OPERATION**

MONDAY TO FRIDAY	8:30am to 7:00pm
SATURDAY	9:00am to 5:00pm
SUNDAY	12:00pm to 4:00pm

WWW.STRATHCONAREGISTRY.COM  
INFO@STRATHCONAREGISTRY.COM  
/STRATHCONAREGISTRY  
(780) 430-1154

**10375 - 78 Ave NW - 78 Ave NW**

**10375 - 78 AVE NW, EDMONTON**  
NEXT TO SAVE ON FOODS ON GATEWAY BLVD

Authorized Registry Agent

## Register Now! Spring and Summer Registered Programs/DayCamps

Summer Day Camps registration: Move.Learn.Play Members: March 12 @ 8:30am; Non-Members: March 13

Summer Registered Programs: Move.Learn.Play Members: April 30 @ 8:30am; Non-Members: May 1

The City of Edmonton is committed to involving the people affected by the decisions it makes. There are a variety of methods by which Edmontonians can engage with the city on various issues and initiatives impacting citizens.

## Let the City know what you think about:

- Let's Keep Talking: Future of Waste – provide your input: [edmonton.ca/futureofwaste](http://edmonton.ca/futureofwaste) (February 10 – April 15)
- Residential Winter Road Maintenance: Share Your Thoughts: [https://www.edmonton.ca/transportation/on\\_your\\_streets/residential-winter-road-clearing.aspx](https://www.edmonton.ca/transportation/on_your_streets/residential-winter-road-clearing.aspx) (March 31)

**Nathan's Piano Studio**

*\*Dynamic Piano Lessons – For the Rest of Us\**

Engaging Tangible Activities  
Refreshing Personalized Direction  
Valuable Skill Development

Come Join the Music-Making Today!

7-Year Professional, B.Mus. (Classical Piano), B.Sc. (Civil Engineering)

**780.999.9691**  
nathan.eisentraut@gmail.com  
Located in Belgravia

**harmony**  
LANDSCAPE DESIGN

Jan Hardstaff, BSc  
Landscape Designer  
Project Manager  
Horticulturist  
[www.harmonylandscape.ca](http://www.harmonylandscape.ca)

780.982.7488

# the belgravian

Published by Belgravia Community League, the belgravian newsletter reports on community news, programs and events within the Belgravia area.

## Frequency

We publish 10 issues per year

## Monthly Distribution

We deliver approximately 960 copies to homes in Belgravia. Copies are also available at Gracious Goods and Belgravia Hub

## Online archive

<https://belgraviaedmonton.ca/newsletters/>

## Advertising

Advertisements should be submitted to [adsmanager@belgraviaedmonton.ca](mailto:adsmanager@belgraviaedmonton.ca)  
Advertising for businesses located outside of Belgravia, McKernan, and Windsor Park are limited to business card size.

## Editorial Submission

Submission are subject to editorial discretion and available space. To submit an article email [editor@belgraviaedmonton.ca](mailto:editor@belgraviaedmonton.ca)

## Schedule

Issue	Content Deadline	Delivery
October 2018	Sep 14	Sept 22-23
November 2018	Oct 19	Oct 27-28
December 2018	Nov 16	Nov 24-25
Jan/Feb 2019	Jan 11	Jan 19-20
March 2019	Feb 15	Feb 23-24
April 2019	Mar 15	Mar 23-24
May 2019	Apr 19	Apr 27-28
June 2019	May 17	May 25-26
July/Aug 2019	June 14	June 22-23
September 2019	Aug 16	Aug 24-25

## Advertise with us!

### File types

We accept ads in PDF, JPG and TIF file formats

### Image resolution

Images must be 200 dpi at 100% (full size)

### Payment methods

We accept payment by cheque payable to the Belgravia Community League

### Rates per issue

We offer a 10% discount for multiple ads paid in advance

### Pricing

Ad Size	BCL member	Non-member
Business card	\$25	\$50
¼ page	\$50	\$75
½ page	\$75	\$100

## Contact

[adsmanager@belgraviaedmonton.ca](mailto:adsmanager@belgraviaedmonton.ca)

## Ad Sizes

**Business Card Ad**  
9.5 cm x 6.4 cm

**¼ Page Ad**  
9.5 cm x 12.7 cm

(Not available to businesses outside of Belgravia, McKernan and Windsor Park)

**½ Page Ad**  
19 cm x 12.7 cm

(Not available to businesses outside of Belgravia, McKernan and Windsor Park)

## Meet Your Neighbour: Jack Francis

According to the 2016 Municipal Census, Jack Francis is one sixty Belgravia residents who are eighty-five years and older. When asked how he came to live in Belgravia, Jack told a story about a neighbour to his parent's Tofield farm who came home from a Calgary bull sale and told twenty year-old Jack that the University Live Stock Farm (most commonly known as the University Farm) needed a "man in beef." With three brothers all wanting to farm, Jack decided this was his chance to still do what he knew how to do and make it easier for his parents to divide up the family farm.



By August 1949, Jack was living in one of the four rooms in the Livestock Pavillion reserved for single men working at the University Farm. His marriage to Joyce Hill in 1953, allowed them to move into House #3, one of the University Farm houses built for married couples and their families. Jack and Joyce soon welcomed their son Dale in 1955 and daughter Ila, in 1957.

Jack filled important positions at the University farm initially as Swine Herdsman and then Beef Herdsman until the beef cattle were dispersed in 1960. With research in sheep developing at that time, Jack moved to Sheep Barn. He worked there for the next nine years until the sheep too were dispersed. Jack continued to live and work at the University Farm until he retired in 1991.

He witnessed changes to the land just north of the University Farm. Jack has a photo of that land when

Fox Drive was just a gully of trees and a creek with most of present day Belgravia, a pasture where cattle from University Live Stock Farm went to graze. Jack and Joyce watched as houses were gradually being built in Belgravia and bought the one they wanted to move to when Jack retired. Built in 1952, it is the same house Jack still lives in today.

Since Joyce passed away last August 26, 2018 ten years after the signs of dementia had begun, Jack has continued his work on the ALES Museum he started in 2000 (for a review of this work, see the *Edmonton Journal*, May 6, 2015) and he has maintained his deep Belgravia connections particularly with St. Paul's United Church. He and Joyce were married for sixty-six years and the patterns they established in Belgravia have kept him going. Luckily for the BCL, he's one of our most dependable hamburger flippers for the annual BBQ and Membership Drive, turning out even this past September. Born in spring 1927, Jack is one of Belgravia's treasures with a long view of how we have grown and developed. And we know there are more people to meet and interview to capture the history of Belgravia through their stories.

If you know of someone we should interview, please let us know by contacting Catherine ([editor@belgraviaedmonton.ca](mailto:editor@belgraviaedmonton.ca)). We appreciate your help!