

BELGRAVIA
COMMUNITY HALL
11604—74
AVENUE
EDMONTON

The Belgravia News



FEBRUARY 2009

www.belgraviaedmonton.ca



Adult Card Evening March 6th 7-9 pm Belgravia Hall

Plan to come and enjoy an evening of cards and social interaction.

Games include but are not limited to Whist, Hearts

URGENT TRANSPORTATION ISSUE

The proposed signal phases at the corner of 76 Avenue and 114 Street are likely to cause considerable delay in exiting our neighborhood, particularly during the afternoon rush hour. (Though relief from the recent situation should be on the way.) One other option that might move traffic more efficiently would be to eliminate the eastbound to northbound left turn from 76th onto 114th. If you are strongly opposed to such a solution, or want to discuss other options, please contact Sandy Guilbert

Transportation@belgraviaedmonton.ca or (780)437-5807.

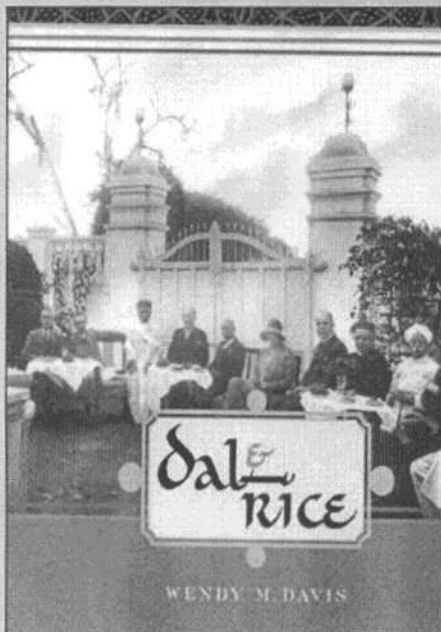
Community League Meetings are held on the first Thursday of every month at 7:30 PM.

Everyone is welcome to participate. Please come and help us to continue to make Belgravia a wonderful place to live!

Belgravia Community League Annual General Meeting June 7, 2009 12-4pm

BBQ followed by meeting
Looking for local amateur bands to provide entertainment during the BBQ.
Contact **Luciana**
sacchi@hotmail.com





In 1914 Godfrey Davis arrived in India, a junior officer in the Indian Civil Service. By the time he reluctantly returned to England thirty years later he was a high court judge with a knighthood. Sir Godfrey fell in love with India. He sympathized with the independence movement and shared a great friendship and mutual admiration with Mahatma Gandhi.

Wendy Davis inherited this affection for India and its people. In *Dal & Rice* she chronicles the memories of her childhood and offers a poignant and measured character study of her father. Her story is part social history, part travelogue, but mostly a very personal account of a relationship with an exotic, chaotic, and often mysterious country.

A near century of colonial rule left an indelible mark on India. Avoiding political or ideological perspectives, Wendy Davis has written a fascinating memoir that captures an unusual childhood and a vanished way of life.

Review quote

"Davis is an uncontaminated primary witness to a time for which living witnesses are growing scarce. She has a tough and curious intelligence, and writes with charm and with humour." S.K. Johannesen, professor emeritus of history, University of Waterloo, and author of *Sister Patsy*

Taken from McGill-Queen's University Press January 2009

Wendy Davis is a resident of Belgravia. She will be having a book launch on March 29th at the Winspear. Look for more info in the next issue.

Infants to Preschoolers with their caregivers are welcome to join

St. Paul's Playgroup

We are an informal, non-denominational, co-operative group that meets on Monday mornings from 9:30 to 11:30am in the basement of

St. Paul's United Church, 11525—76 Ave.

Children have access to a toy filled playroom and a large open area that provides space for

riding toys and room to run, chase, and make noise—
an outlet for winter energies!

For further information Call:

Lori-anne Bond lorianne.bond@gmail.com



President's Message

Your Community League is going to need some help this spring. Two members of our board have announced that they will be resigning. We will need a new Treasurer as well as a Vice President. I would like to thank both Martin Unsworth and Grant Hutcheon for their years of service in helping to keep Belgravia one of the best places in Edmonton. If you are interested in helping out your community league please give me a call or email or just show up at one of our regular meetings.

As most of you are aware the rest of the comings and goings revolve around transportation. Two of our main automobile entrances and exits from our community are going through some major changes due to the LRT and lots of expansion in the U of A hospital area. We are hoping that when the dust settles around the 76 avenue and 114 street intersection that we will still be able to get out of our community in the afternoon.

I have my doubts as the new light sequencing will reduce the amount of time that is provided for East West traffic flow as we will have to split the time between the 2 directions. I am quite sure the transportation department will want to make sure that traffic on 114 street gets the lion's share of the time to help clear rush hour traffic. The major reason for the change in sequencing was that vehicles cannot be left in front of the LRT tracks, which means all traffic has to be able to clear the intersection. As indicated on the front page one solution that would allow the shared flow of East West Traffic again would be to eliminate the eastbound to northbound left turn from 76th onto 114th. Please contact Sandy or myself if you have any question or concerns on this issue.

One final note I would like to thank Councilors Don Iveson and Bryan Anderson for stepping in and helping our community out to resolve the 115 street and University Ave intersection issue which for the most part was caused by poor communication by Alberta Health Services.

Thanks Parker Fjeldberg president@belgraviaedmonton.ca

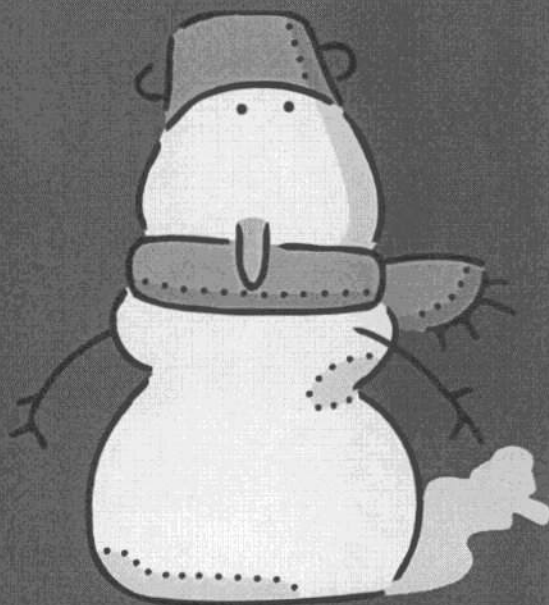
Please visit us on the web www.belgraviaedmonton.ca

DAVE RICHARDS
Neighbourhood
Journeyman Carpenter
General Contractor

Complete Residential Renovations
including Plumbing and Electrical

No Job Too Small-References

Phone 780-886-6005



Foster and Ungstad

Jeff Allen Gallery
Strathcona Place Senior Centre
10831 University Ave.

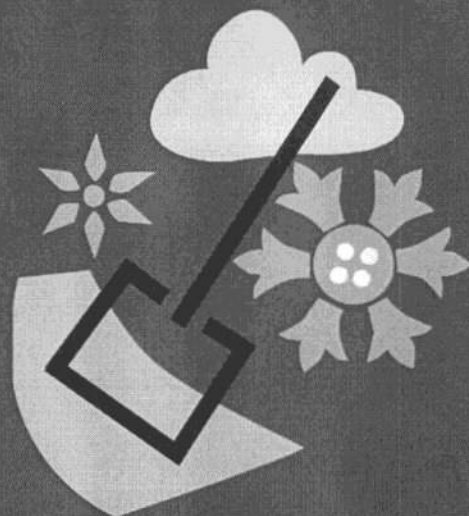
March 3, 2009 – April 2, 2009

Reception March 11, 2009 6:30 – 8:30 PM

Two well known talented artists have come together to produce this exceptional exhibit. Millard Foster's artistic talents shine using papier tole and 3D decoupage, while Master Potter, Magdalene "Mag" Ungstad, uses her appreciation and subtle relationship with clay for artistic expression. Everyone is welcome to view the exhibit and meet the artists at their reception.

Best viewing hours: 11:30 AM – 1:00 PM and 3:00 – 4:00 PM

Centre is open Monday through Friday, 9:00 AM – 4:00 PM
Call 780-433-5807



Your Custom Renovation Specialists



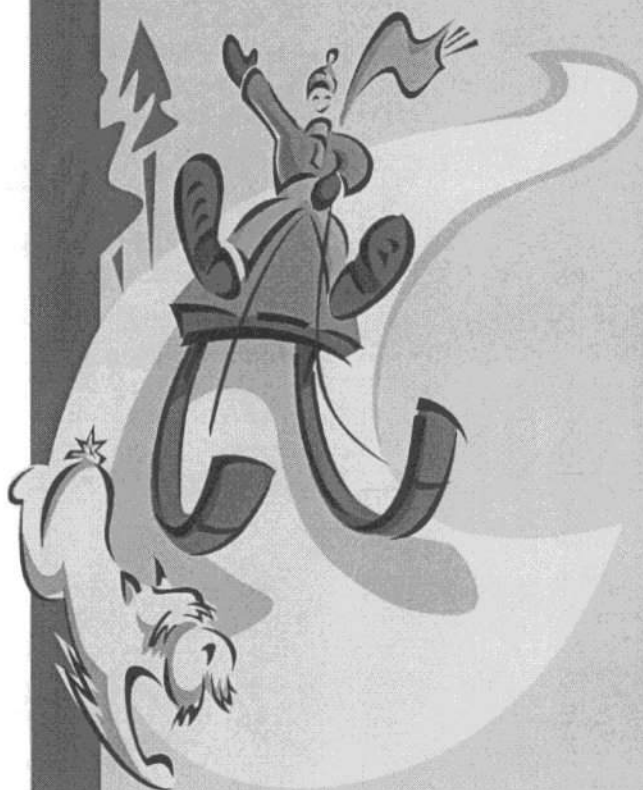
CAL TEBB
President

RUSS FERMANIUK
Operations Manager

www.homestyleconstruction.ca

10719 - 205 Street • Edmonton, AB • T5S 1Z3 • P 780.479.6032 • F 780.479.6034

Winter Fun



Hit the Trails!

Edmonton-home to some of the most scenic cross-country ski trails in Alberta-just minutes from your door.

Whitemud Park—Keillor Road Access
(Classical)

William Hawrelak Park—9330 Groat Rd
(Classical, Skate)

Victoria Park
116 St & River Valley Road
(Classical, Skate)

Snow Valley—One block South of Whitemud on 119 st
(Classical, Skate, Night Skiing)

Lessons available at Kinsmen Park and include equipment. To Register: Phone 780-496-4999 Press 2 or online at eReg@edmonton.ca

Downhill Fun!

Bring your family or round up some friends to enjoy the thrill of tobogganing. These hills have been prepared by the City of Edmonton for safe sliding, are equipped with run outs, safety signage and reduced hazards.

Emily Murphy Park—11904 Emily Murphy Park Road

Government House Park—Groat Road & River Valley Road

Whitemud Park—13204—Fox Drive

Gallagher Park—9411-97 Ave

Sliding and Gliding!

Enjoy these outdoor rinks for a quick game of hockey or just a peaceful glide around the rink.

Victoria Park Oval—116 St & River Valley Road

William Hawrelak Park—9330 Groat Road

City Hall—#1 Sir Winston Churchill Square

Legislature Grounds—109 St & 97 Ave
And of course...our own **Belgravia Community League Rink**

*Information taken from City of Edmonton website:
www.edmonton.ca*



DANCE'N MORE! for KIDS
 Dance, Movement, & Performing Arts
 Experiences for Girls and Boys ages 4-9

*DANCE FOR FUN, EXERCISE,
 HEALTHY ACTIVITY!*

NEW UNIQUE Program!
 EVERY CHILD learns many dance forms!
 Integrated with other Arts Activities
 A Fun, Creative Learning Experience!
 Full Program plus Summer Classes

Dance'n More! for Kids Instructor: Vanessa Harris
 Location: University Area 780.436.1590 vandot2@telus.net

Newsletter Advertising Rates

Size	BCL Member	Non Member
Business card	\$15.00	\$25.00
1/4 page	\$25.00	\$35.00
1/2 page	\$45.00	\$60.00
Full page	\$75.00	\$100.00



Ladies, are you in need of relaxation?
 Give yourself a well deserved hour of nurturing and relaxation.

Mady Mooney is a Registered Massage Therapist and practices in the Belgravia area.

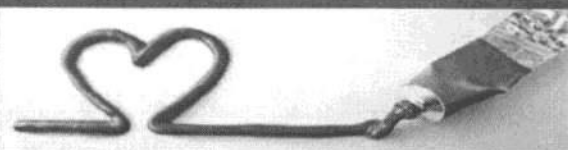
Massage Therapy, Cranio-Sacral Therapy, Foot Reflexology and Reiki are offered.

Clients with extended health coverage are able to use their health plan.

Art Therapy sessions are also available as part of a supervised practicum.

Call Mady at 242-6065 (Edmonton) or e-mail mamooney@telusplanet.net for your appointment or information.

News from Our School



Halfway through the school year but things are anything but dull at Belgravia! January saw artist Larisa Sembaliuk Cheladyn visiting the school for a wonderful creative week. The students took great pride in displaying their fantastic work at an Art Show February 12th. The annual Talent Show was held early this month and the diversity of the performances was amazing. Students in Grade 3-6 experienced the Edmonton Opera's production of "Daughter of the Regiment" and then it was on to the Edmonton Symphony on February 13th at the Winspear Theatre. The whole school will enjoy a performance by Concrete Theatre as they are back by popular demand performing "Apples and Oranges". Students are off to the Van Vliet Centre later this month for a full day of physical education. Activities include rock-climbing, gymnastics and swimming. The Running Club has been hard at work practicing and will have its first competition on February 18 at the Butterdome. The Annual Science Fair is scheduled for March 5th in the school gym. It always proves to be interesting and informative. Kindergarten Registration is now available. The birthdate cutoff is March 1, 2005 for entry into kindergarten for 2009-10. Please notify the school office if you are also interested in the Belgravia Community League Kindercare program as space is limited.

St. Paul's United Church Ladies Group invites you to the following talk:

Speaker: Dr. Moira Glerum
Professor, Dept's of Cell Biology and
Medical Genetics
Faculty of Medicine and Dentistry
University of Alberta

Title : Mitochondria : Our Bodies' Power Plants
(and recent developments in genetics)
Tuesday March 3, 2009, 9:30 AM
Youth Room (lower level), St. Paul's United
Church

10:30 Coffee 11:00 Business meeting

♪ PRIVATE SINGING INSTRUCTION ♪

BEGINNER AND EXPERIENCED SINGERS WELCOME!

- Singing Styles Flexible: Musical Theatre, Pop/Contemporary, Classical (and others)...
- Private and Semi-Private (small group) Classes
- Reasonable Rates
- Also Audition and/or Performance Preparation
- Also Speech, Monologue/Scenework

♪ Instructor: Vanessa Harris ♪

Location: University Area 780-436-1590 vandot2@telus.net



Give Your Children a Strong Start

Belgravia Elementary School Open house
Thursday April 16th, 2009 | 5:00 - 7:00 PM

- Located in the university area
- Low student teacher ratios
- Academic excellence
- Outdoor learning centre
- New playground

11605 - 74 Avenue, Edmonton, Alberta
(780) 435-5560
www.belgravia.e-psb.ca

Full Out Of School Care Program
Space Available
(780) 660-2672
www.ebosc.ca





Craft Corner

Regardless of the season, this easy-to-make feeder will be appreciated by your neighborhood birds. It features seed treats to provide them extra energy—particularly suitable during the colder months of the year.

CRAFT MATERIALS:

- 1/4 oz pkg of unflavoured gelatin
- 2 c. of your favourite wild birdseed
- 3 4" mini bundt pans or fluted pans
- Colourful ribbon

1. To make a batch, bring 6 tablespoons of water to a boil. Empty one 1/4-ounce package of unflavored gelatin into 2 tablespoons of cold water in a large bowl. Let the gelatin sit for 1 minute, then add the boiling water and stir for 2 to 3 minutes or until the gelatin has dissolved.
2. Next, stir 2 cups of your favorite wild birdseed into the gelatin, mixing thoroughly. Let the mixture set for a few minutes, then stir again. Repeat this process a few times, if necessary, allowing the seed to absorb the liquid. Spoon the seed mixture into three 4-inch mini bundt or fluted pans (available at many housewares stores)
3. Place the pans in the refrigerator or a cool room and let them set for at least 3 hours. Remove the wreaths from the molds by inverting the pans and tapping along the bottoms. Allow the wreaths to air-dry overnight.
4. Finally, tie colorful ribbon around your wreaths and hang them outside in a protected spot, such as under an awning or eaves, where the rain won't melt them.

BCL Meeting Notes

November 26, 2008 BCL Board Meeting

MOTION: Grant moves and Sandy seconds that BCL provide BOSC \$5000 towards financial loss experienced in the 2008 summer program. DEFEATED, summer program was paid for already.

MOTION: Sandy moves and Martyn seconds that BCL provide BOSC \$5000 to assist with meeting the operating costs incurred due to new provincial childcare licensing requirements. CARRIED

February 5, 2009 BCL Board Meeting

MOTION: Sandy moves and Gwen seconds that BCL provide \$2000 to purchase and install counter and cupboard for Playschool Room. Tabled from December 4, 2008 meeting due to lack of quorum. Email / telephone vote. Carried.

MOTION: Sandy moves and Rob /Terry seconds that BCL pursue the Community Public Arts Grant Program for a project designed by Will Bauer. Carried

MOTION: Gwen moves and Grant seconds that we fund the 1 un-funded week in August of the Bel-Mac Green Shack Program. Motion carried

Belgravia Community League Out of School Care Program

We offer a fantastic Kindercare Program!



11:25 a.m. – 3:40 Daily.

Enrollment can be started anytime!

Learn through play!

Low student-teacher ratios!

Choose part-time or full-time!

Safe, nurturing environment that follows the kindergarten curriculum! Great fun and crafts!

Helps student transition from half day to a full day of schooling!

If you require additional care time, we offer competitive out of school rates. Belgravia Community League Out of School Care offers morning care (before school starts) and after school care (directly after our Kindercare Program completes).

Please contact Jennifer Tkachuk or Janette Usher

Belgravia.osc@gmail.com
780-437-1866

Need To Care for Yourself?

I offer therapy for individuals, couples, and families. Therapy is an active process, like a journey of self exploration.

There are many reasons people try therapy: stress management, help for anxiety attacks and depression, addictions, personal and spiritual growth.

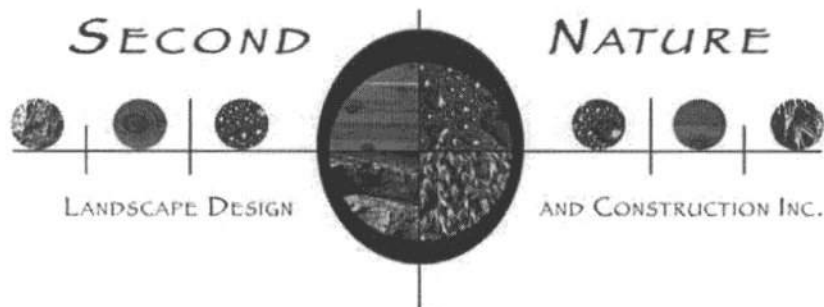
Jackson Mooney and Associates

Location: Belgravia

Call Jackson Mooney (780) 242-6064

Confidential Voicemail
Flexible Rates and Times
Enquiries Welcome

BELMAC OUTDOOR SOCCER

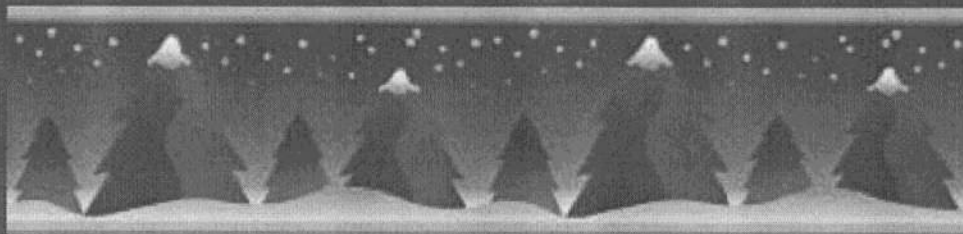


7915-119 st. Edmonton AB T6G 1W6 (780) 430-6777
(780) 906-9057 cell

www.snaturedesign.com

e-mail: snature@shaw.ca

**Plan ahead for your spring or summer projects.
We have over 20 years of experience in residential
landscape design and construction.**



Energy from the ground up.



**\$3500
REBATE**

Retrofit your Home with a Geothermal System.

**geothermalTM
Utilities**



NextEnergyTM
GEOTHERMAL FOR YOUR HOME

780.413.1723 • info@geoutilities.ca

www.geoutilities.ca • 12504 - 123 St., Edmonton



Geothermal Explained – Savings for Every Home

Jan 8, 2009 – (Edmonton, AB) The ever increasing energy costs required to maintain a home in Edmonton have residents looking for alternatives. Geothermal Utilities, an Edmonton-based NextEnergy dealer, provides an effective solution to this universal problem, specializing in the design and installation of ground source heating and cooling systems for urban, rural and commercial applications.

Geothermal installations date back as early as 1912, but have only gained popularity and wide-spread acceptance in Alberta in recent years, as homeowners watch their hard earned money disappear with rising natural gas bills. In the past year alone, geothermal system installations have doubled. This innovative, tried and tested technology saves money and evokes social and environmental responsibility.

Geothermal is up to 400% efficient and works because it costs less to move heat around than to create it. An appropriately designed loop field picks up the temperature of the earth, and uses a heat pump and refrigeration process to extract, concentrate and then distribute the heat energy from the loop stream through the ductwork of a house. In the summer season, this process is reversed automatically for “free” air conditioning. Heat is drawn from inside the house and transferred to the earth, without any additional equipment. It can fulfill your domestic hot water needs as well. In a retro-fit application, a single unit replaces the furnace and air conditioning equipment, and hooks up to existing ductwork. 75% of your energy is provided by the earth and your natural gas bill is eliminated.

A geothermal system is a smart investment that will increase the resale value of your home. It reduces energy costs by up to 75% and has less required maintenance than a fossil fuel furnace. A safer and more comfortable living environment is created by this quiet system, as there is no open flame and no risk of CO poisoning. There are also government grants of up to \$3,500 and 100% financing available.

Systems are uniquely engineered to meet your current or future home's specifications. Geothermal Utilities has combined the industry's best products, talented specialists and reliable retailers to make this clean and clever technology accessible at competitive rates.

Secondary Suites

On February 2nd, Edmonton City Council passed Bylaw 15036 which relaxes rules governing secondary suites, and allows garage and garden suites. Secondary suites (basement or above ground) will now be a permitted use in every house. Previously, secondary suites were restricted to specific locations. Now the City "may exercise discretion" and allow Garage Suites and stand-alone Garden Suites on corner lots, lots fronting onto a service road, or backing onto a lane adjacent to an arterial road, or lots adjacent to multiple unit housing or a park. Community Leagues and adjacent residents will not be notified of applications for secondary suites, but they will be notified of Garage and Garden Suites. City Council considered EFCL's recommendations, presented at the Public Hearings in November and January, to make secondary suites a discretionary use in owner-occupied buildings, and review the rules around parking, along with the height of garage suites. City Council debated the issues, but in the end they chose relaxed rules for development of "affordable rental suites".

However, Council did understand EFCL's preference for secondary suites in owner-occupied houses. A motion was passed asking City Administration to report on the option of tying the Cornerstone Grant Funding, for suite construction, to owner-occupied sites.

Council also made a motion requiring City Administration to report back to City Council in 2010 with a report on the number of permits issued, the increase in the number of affordable units, and concerns as a result of Bylaw 10536.

EFCL believes that the concerns of its members should also be reported to City Council in 2010. EFCL encourages Community League members to monitor the development of secondary, garden and garage suites over the next year.



NORTGATE INDUSTRIES PRESENTS

Silver Skate FESTIVAL

FEBRUARY 20 - 22

February 20-22
Hawrelak Park
www.silverskatefestival.org



Belgravia Community League Out of School Care Program

Out of School Care Staff Needed

Do you need experience working with school age children or just love working with kids?

Need flexibility in your work while attending school?

Belgravia Community League Out of School Care Program is located within walking distance or a short bus ride to 11605-74 Avenue (West of McKernan Junior High School).

We require mature staff to work the following shifts:

Morning Shift: 7:30 - 9:00

Lunch Shifts: 11:15 - 12:45

After School: 3:15 - 5:45 p.m. (Thursdays 2:15 - 5:45 p.m.)

Submit your resume to Jennifer Tkachuk - Admin. Director

Email: belgravia.osc@gmail.com

780-437-1866



This position could lead into full time summer employment in our summer care program.

STRUCTURAL DAMAGE-- DUE TO LRT CONSTRUCTION IN BELGRAVIA????

Has your home shown any visible signs of cracks either inside or outside?

What action have you taken to address your concerns?

- Contacting the City of Edmonton Transportation Department?
- Contacting your insurance company? -- probably your policy does not cover this type of situation

We recently noted new cracks throughout our home on 75 Ave and have had the city's insurer out taking pictures.

One solution: Let's talk and share ideas. We can work together as a community when approaching the city about our concerns.

Contact: Louise 780 436-5606

lamjamgra@shaw.ca

THE EDMONTON RUSH PRESENT- 2009 Edmonton's Mini Crush Dance Team



SATURDAY MARCH 28, 2009

7:30PM

REXALL PLACE

TICKETS ONLY \$10.00!

TICKETS AVAILABLE AT
YOUR LOCAL COMMUNITY
LEAGUE OR THROUGH THE
EFCL AT (780) 437-2913!



*Must possess a valid EFCL membership
Mini Crush Registration opens Feb. 1, 2009



Belgravia Hall Rental Rates

Adult Functions (14 years and up)

BCL Members

Non-Members

\$100 / 4 hrs + \$20/ additional hr \$175 / 4 hrs + \$30/
additional hr

Children's Functions (13 years and below)

\$75 / 4 hours + \$20/ additional hr \$125 / 4 hrs + \$30 /
additional hr

Damage Deposit \$400

Cleaning, if rental terms are not met, \$60 / hr billed in 1 hour increments



RE/MAX Excellence
17718 - 64 Avenue
Edmonton AB T5T 4J5
Office: 780-481-2950
Fax: 780-481-1144
Each office independently owned and operated

Working hard to become
your family Realtor.

"I make house calls!"

RE/MAX
Outstanding Agents.
Outstanding Results.

Adrian J. Jichita
REALTOR
Direct: 780-964-7629

What's happening at hulbert's?

wednesdays

open 5 to 11 pm

Visit us on a Wednesday for a quiet night out in your neighborhood, with no traffic and no hassles. Our full dinner menu is available, and we feature special selections of fine wines from around the world.

thursday, friday & saturday **open 5 to 11 pm** **live music features** **8 pm show times**

We are proud to feature the finest in local and touring musicians in the jazz, soul, blues, roots, R&B, folk, and singer-songwriter genres. Dinner is ready at 5 pm, and cover charges apply only for showtime so you can come early for dinner, or come later and enjoy the show. Full event listings and artist biographies are available on our website.

sundays **open 10 am-10 pm** **champagne brunch** **10 am-2 pm**

Fancy brunch? Gourmet made-to-order omeletes & crepes, and your favourite brunch and breakfast features. Champagne mimosas, too! **songwriter's stage** **7 pm-10 pm**

Edmonton's best veteran artists perform alongside aspiring up-and-coming talent in this unique fast-paced show of all-original music, with a guest feature artist opening each week's show. \$5/person min. charge

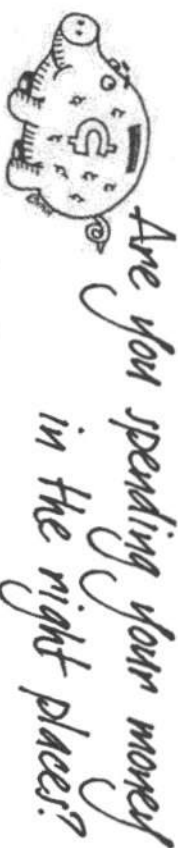
hulbert's is proud to support local artists, like U22 Productions.

U22 is a collection of Canada's most exceptionally talented and promising young musicians under the age of 22. Their mission is to mentor exceptionally gifted young musicians, to inspire them to know and believe in the music within themselves; and to motivate and empower these talented young Canadians to establish credible, sustainable, and rewarding careers in the arts. Visit u22.ca for details!



hulbert's
a good place to meet

7601 115 Street
phone: 780 436-1161
www.hulberts.ca



Are you shopping locally?

Nationwide, it's the centerpiece of Chamber of Commerce campaigns aimed at fighting the recession, and a mantra that has been evoked by main street movers and shakers for decades.

Amid all this long-running boosterism, however, a key fact may be lost: *Shopping local works.*

Economic studies by universities, think tanks and government agencies show that spending locally keeps cash in communities, creates jobs, produces local taxes, saves consumers time, money and gas and builds prosperity. Those same studies speak to the significant "multiplier effect" of a dollar spent locally and how it's "re-invested" in the community over several business transactions.

Granted, shopping locally by itself will not prevent an economic downturn. Although Alberta's resource wealth is helping to insulate Albertans from the worst of the fluctuations, local businesses across the province were the first to feel the pressure of our unprecedented boom and labor shortage, and are now the first to feel the pressure of the economic downturn.

With the threat of financial crisis on the horizon, we are all watching what we spend, and that's not likely to change soon.

But we still go to grocery, hardware and clothing stores. We still buy birthday presents for friends and family, repair our cars, improve our homes and even enjoy the occasional night out.

The idea is, when we do spend, why not make it right here at home, because supporting local small business...

- Saves time, money and gas: How relaxing is a night out at the super-multiplex if it involves traffic, crowds and stress?

- Boosts local economy: The money you spend with local shops is spent buying goods and services from other community businesses, which in turn do the same thing.

- Helps your neighbors: Do you know the owners and employees of the businesses you shop at? They benefit from the money you spend and you benefit from friendly and familiar service.

- Builds a stronger economy: This will not happen overnight, but success builds success, and prosperous local businesses attract new investment and spur community prosperity.

These days, we're all thinking carefully about how we spend our money -- *why not spend yours toward building a stronger economy?*