

BELGRAVIA
COMMUNITY HALL
11604—74
AVENUE
EDMONTON

www.belgraviaedmonton.ca

Community League Meetings
are held on the first
Thursday of every month
at 7:00 PM.

Everyone is welcome to
participate. Please come
and help us to continue to
make Belgravia a wonderful
place to live!



The Belgravia News



DECEMBER 2008



HOLIDAY GIFT SHOW

At Belgravia Community Hall

December 6

1 pm — 4 pm

Featuring unique items from local artisans such as silver jewellery,
specialty foods, paintings, hand-made cards,
pottery and much more!

Come have fun and enjoy FREE cookies and apple cider with your
neighbours and pick up some unique gifts!

President's Message

With all of the bad news about falling stock markets and looming world wide recessions it is easy to concentrate only on our own personal financial belt-tightening. My wife, Barb and I have decided this year to forego our customary stocking filling and gifts to each other and instead make up "Thermal Mugs of Joy" for those whose life is on the streets. These we will fill with coffee gift certificates, bus tickets, warm socks & hand-warmers. We want to challenge all Belgravians to do whatever you can to help those less fortunate this holiday season. Whether it be giving the gift of time by helping serve a meal or monetary donations if each one of us helps out any of the many charities out there it will make a huge difference.

2008 brought with it challenges for our community from the many detours due to construction to the lack of a playground during the summer months. All of these challenges called for volunteers to do everything from organize fundraising committees; act as community liaisons; to working at various fundraising events such as the casino. True to the spirit of the Belgravia community in every case we were not left with any shortage of volunteers eager to help out. This is your community and your input is invaluable. For that we thank you for all of your help and ideas.

Wishing you and your family a safe and happy holiday season.

Parker Fjeldberg, President

Transportation



76th Avenue at 114th Street (west side)

The following is a reply from the Traffic Operations' traffic signal engineer to safety questions regarding this location.

"The ultimate signal operation at 76 Avenue and 114 Street will be as follows:

A pre-signal (west of the tracks) will replace the stop sign (currently in place). The pre-signal will end first before the intersection (114 Street) signal. The extended 'greentime' at the intersection will be able to "flush" the vehicles between the two signals and clear the tracks of vehicles.

- The eastbound and westbound signals will operate separately. Eastbound will come on first (both pre-signal and intersection), and will conclude as per above. Westbound follows. As such, this operation will not require the turning vehicles to yield to the opposing traffic nor to pedestrians (pedestrian crossing ban on the north and south crosswalks – pedestrians use the underpass).
- The northbound left-turn will be an actuated operation, and can only be made during the display of the left-turn arrow (i.e. protected/prohibited operation). This operation will prevent conflict between the pedestrians at the pre-signal location and the left-turning vehicles and ensure that vehicles are not stuck on the tracks when the LRT arrives.
- The same applies to the southbound right-turn; it will also be a protected/prohibited only operation to prevent conflict between pedestrians at the pre-signal location and the vehicles (and again, ensuring that the track is clear of any vehicles at all times).
- The pedestrians (pre-signal location) will have a 'WALK' indication at the same time as the northbound/southbound through green signal at 114 Street.

The final signals will not be installed until February or March, just before commissioning."

I hope this makes sense to you. Bottom line, it should get better – in time. In the meantime, pedestrians proceed with caution. (I had to pause the other day for a motorist who did not slow at the stop line nor as she drove over the pedestrian crossing I was entering and looked annoyed when I waved my arms at her.)

The Jubilee Auditorium's new car park is open for business

- Motorists can access the new car park from 83 Avenue or 87 Avenue. Access is not available from 114 Street.
- With the completion of the new car park, the total number of parking spaces at the Jubilee Auditorium is back to pre-construction levels.
- Surface parking is again available on the south side of the auditorium.
- Barrier-free surface parking is available on the east side of the auditorium as well as on the ground floor of the new car park.
- The elevators in the new car park will not be in service until later this year.

New / Revised Bus Service after the LRT is extended to South Campus

Information from the City:

Route 7 – This route will no longer operate on the south side of the river. It will be replaced by Route 327

Route 327 – This new small bus route will serve the neighbourhoods of Belgravia and McKernan replacing Route 7. The route will operate along the existing routing of Route 7 between the Belgravia turnaround and Whyte Avenue. The route will then operate east on Whyte Avenue, south on 104 Street and west on 76 Avenue to 109 Street and the existing routing of Route 7. The route will provide residents with a good connection to the LRT at the McKernan-Belgravia LRT Station and direct service to Old Strathcona. The route will operate every 30 minutes in all time periods. This provides increased frequency during the Weekday late nights and Weekend early mornings and nights.

I asked: After this change is made, what would a student from Belgravia who has been using the bus to reach Victoria school have to do to reach that destination? Or, say, to reach the present stop at 107 Avenue and 124 Street?

Answer: Take Route 327 and transfer to the LRT (or walk to the LRT station, depending on how far the origin of the trip is). Get off the LRT at Central Station, and transfer to Route 7 at 101 Street/101A Avenue to 124 Street/107 Avenue (see map on website)

Transportation cont'd

Parking Restrictions

There was a good turnout at the community meeting last month to discuss the pros and cons of implementing parking restrictions in the areas of Belgravia that do not presently have such restrictions. Although many residents would prefer not to have such restrictions, there was little doubt expressed that they will be necessary on most streets in Belgravia once the LRT stops at 76th Avenue and South Campus, making our community a potentially attractive parking lot. Dave Kinsman of Traffic Operations explained that it is possible to "personalize" the restrictions block by block. That is, signs can specify that parking is allowed for one, two, or three hours and can also vary in the hours the restrictions are in place. The favourite choices seemed to be 2 hours, between 8 am to 6 pm, Monday to Friday.

To apply: two thirds of the people along a block (both north and south side) need to sign a petition requesting the City to implement restricted parking. (The City urges people to sign only if they are in agreement so they don't later get calls from people asking that their names be removed.) The City also spot checks the names on a petition to ensure everyone who has signed understands the implications of the request.

The implications: For the signs to be an effective deterrent, there needs to be enforcement. In this area, there are regular and frequent checks at the start of the university term, particularly in the fall. There is, as well, random enforcement throughout the year. Visitors from Edmonton will have to respect the parking restriction or may get a ticket. It was suggested that if a visitor is going to stay longer, you could allow them to park in your garage or driveway while you park on the street (which is allowed since you have a permit).

Permits: Parking permits are sent annually to residents, one per registered vehicle. Temporary permits can be requested for the vehicles of out-of-town guests, temporary workers in your home, and for one time special events.

The community league is willing to help organize the petition drive. First, we will have a set of petitions that you can use to collect signatures. When you have collected the signatures of those wishing to request parking restrictions, we will forward them to the City, along with explanations, if necessary, why on some blocks the names on the petition do represent two thirds of the residents. Also, since the City requires that restrictions be continuous rather than piecemeal (for example, on 75th, 74th, and 73rd -- not 75th, 73rd, and 71st), the consensus at the meeting was for a community-wide drive.

If you would be willing to volunteer to ask your neighbours to sign a petition, please phone me at 437-5807 or send an email to transportation@belgraviaedmonton.ca. If I don't hear from anyone along a certain street, I will attempt to find someone who might be willing but perhaps didn't read this newsletter. You would, of course, make my life easier if there was lots of enthusiasm and I don't have to go out hunting for volunteers. Thanks, Sandy Guilbert

♪ PRIVATE SINGING INSTRUCTION ♪

BEGINNER AND EXPERIENCED SINGERS WELCOME!

- Singing Styles Flexible: Musical Theatre, Pop/Contemporary, Classical (and others)...
- Private and Semi-Private (small group) Classes
- Reasonable Rates
- Also Audition and/or Performance Preparation
- Also Speech, Monologue/Scenework

♪ Instructor: Vanessa Harris ♪

Location: University Area 780-436-1590 vandot2@telus.net





Ladies, are you in need of relaxation?
Give yourself a well deserved hour of nurturing and relaxation.

Mady Mooney is a Registered Massage Therapist and practices in the Belgravia area. Massage Therapy, Cranio-Sacral Therapy, Foot Reflexology and Reiki are offered. Clients with extended health coverage are able to use their health plan.

Art Therapy sessions are also available as part of a supervised practicum.

Call Mady at 242-6065 (Edmonton) or
e-mail mamooney@telusplanet.net for your appointment or information.

Beginner Learn to Skate Lessons
Parkallen Community League Hall
6510 - 111St.

Saturdays, January 10 to February 28, 2009



Preschool Learn to Skate

This program is geared towards children 3 to 5 years old who have limited or no skating experience. Children will learn basic skating skills at their own pace.
1:15 to 1:45 pm (code 295212)
Cost: \$30

Children Learn to Skate

This program is geared towards children 6 to 9 years old that have limited skating skills and are still learning the basics. They will learn to glide and skate using proper technique and balance in a safe and fun environment.
2:00 to 2:45 pm (code 310221)
Cost: \$40

CSA approved skating helmets are mandatory.
Lessons take place outside and will be cancelled due to adverse weather conditions.
Classes will not be rescheduled.

REGISTRATION INFORMATION:

By Phone: 496-4999, press 2
E-REG: <http://leReg.edmonton.ca>

Please register early as spaces are limited.
In Partnership with the Parkallen Community League &

Edmonton COMMUNITY SERVICES



**Lendrum Pottery
Group
Christmas Sale
Saturday, December
6th
10:00 am - 2:00 pm
Lendrum Community
League Building
11335-57 Ave**

**Pottery for all
occasions and
celebrations.**

Holiday Happenings

Holiday Happenings



Fort Edmonton Park — Christmas Reflections

December 7, 14 & 21 from 4-8 pm

December 12-13, 17-20 & 22-23 from 6-10 pm

Tickets go on sale November 15th

For information contact: (780) 496-2925

Christmas Reflections evening program is a great way to celebrate the holidays with family and friends! View charming Christmas displays and lights from your horse-drawn ride through the park, and then savor a cup of cider or hot chocolate. Costumed interpreters invite you to sing carols to live music, construct special Christmas crafts or sample baking from the wood stove. Visit Father Christmas and add a wish to the "wishing tree".

John Janzen Nature Centre Presents- Snowflake Fantasy

Sunday December 14, 2008

A new event that brings to life the myths and magic of garden elves. A Snowflake Party is just the thing to bring them out of their hiding places. Come in costume and win a little prize. We will create a "Sound Garden" for the wee ones to explore; craft pixie or elf wings and wands; and enjoy a special surprise from Thistle Hills Petting Farm. Create snowflakes of all sorts from paper to decorate your home for Christmas. Learn about "Flower Fairies" and the science of snowflakes. Why is each one different?

For information contact: (780) 496-8787

A Christmas Past — Rutherford House

Sunday, December 14, 2008

Join us for a traditional Rutherford House Christmas. Experience the unique sparkle of this elegant house where the halls are decked for the holidays. Enjoy the sweet harmonies of seasonal music, make a craft, help bake cookies in the historic kitchen and sample some hot apple cider. Spice up this holiday season with a visit to Rutherford House.

For information contact: (780) 427-3995

New Years Eve Downtown 2008

Wednesday December 31, 2008

Sir Winston Churchill Square

Bring in the New Year at Western Canada's largest free New Year's celebration. This family event features both indoor and outdoor venues offering activities and entertainment for all ages.



Newsletter Advertising Rates

Size	BCL Member	Non Member
Business card	\$15.00	\$25.00
1/4 page	\$25.00	\$35.00
1/2 page	\$45.00	\$60.00
Full page	\$75.00	\$100.00

DANCE'N MORE! for KIDS

Dance, Movement, & Performing Arts
Experiences for Girls and Boys ages 4-9

**DANCE FOR FUN, EXERCISE,
HEALTHY ACTIVITY!**

NEW UNIQUE Program!
EVERY CHILD learns many dance forms!
Integrated with other Arts Activities
A Fun, Creative Learning Experience!
Full Program plus Summer Classes

Dance'n More! for Kids Instructor: Vanessa Harris
Location: University Area 780.436.1590 vandot2@telus.net



CHRISTMAS SHOW AND SALE

Jeff Allen Gallery
Strathcona Place Senior Centre
10831 University Ave.

December 2, 2008- December 24, 2008

Reception December 10, 2008



The Christmas Show and Sale will feature several of the artists who exhibited at the Jeff Allen Gallery throughout 2008. Come and meet the Artists at their Reception from 6:30 to 8:30 PM. The Art will include paintings, fibre art, wood work and pottery. Everyone is welcome. Come and enjoy some exceptional pieces. Pick up some reasonably priced yet unique Christmas gifts.

Best viewing hours 11:30 AM-1:00 PM and 3:00-4:00 PM
Centre open Monday through Friday, 9:00 AM – 4:00 PM

Infants to Preschoolers with their caregivers are
welcome to join

St. Paul's Playgroup

We are an informal, non-denominational, co-operative group that meets on **Monday** mornings from **9:30 to 11:30am** in the basement of

St. Paul's United Church, 11525-76 Ave.

Children have access to a toy filled playroom and a large open area that provides space for riding toys and room to run, chase, and make noise—
an outlet for winter energies!

For further information Call:

Natalia 436-1243 or e-mail ncoutinho@shaw.ca

News from Our School

It was a busy month at Belgravia School. The Bottle Drive was a success and the proceeds came to \$1698. Thank you to everyone who helped out on October 18th and to the community for continuing to support us.

The Bake Sale was also very successful and raised \$868. Another thank you to all who supported this event.

The Track Club has finished for the year. Thanks goes out to Ms. Kosanovich for her wonderful work through the fall. Congratulations to all who participated and ran for Belgravia and to Julee Workun and John Crowther for their silver medals at the Harriers!

Study Buddies are back in the school. These university students are in the classrooms daily working one on one and in small groups with students.

The Scholastic Book Fair is coming to the school on December 1st—4th. This fair helps build our classroom libraries by purchasing books and donating them to the teachers. Last year more than \$100 in books were donated.

Winter concert rehearsals are well under way for the big show on December 17th.



26th Annual Pumpkin Party

The school gymnasium was transformed to a pumpkin patch on Sunday, October 26th as approximately 30 children turned up for this fun event. Mr. PumpkinHead was on hand with his usual shenanigans. Thanks to the Norby family for their continuing dedication to the children in Belgravia.

News from the Edmonton Police Service

The police have upgraded their website and they again are posting neighbourhood crime statistics, updated monthly. If you are interested, go to www.edmontonpolice.ca. Click on Crime Files at the top of the page. When that comes up, click Neighbourhood Crime Statistics on the left of the page. Then click the blue line View Neighbourhood Crime Statistics for the Previous Month (it's actually accumulative for the year). There you will find statistics for each community.

Nigel Stevens, the superintendent of police for the southwest division, asks everyone to report problems, including traffic complaints, to the non-emergency number. (Except, of course, if it is an emergency.) The police do go through these complaints daily, looking for trends. No reports, no trends, no proactive policing.

He also reminds everyone that this is the season when you want to be extra sure that you leave as little valuable in your car as possible. During the day, as well as night.



The Mustard Seed EDMONTON

10635 - 96 Street
www.mustard.ab.ca
(780) 426-5600

Winter Wish List

- ♦ warm blankets or sleeping bags
- ♦ winter coats ♦ gloves ♦ men's underwear
- ♦ backpacks ♦ warm socks ♦ travel mugs
- ♦ wrapping paper (only prior to Christmas)

Extended Christmas Drop-Off (Nov 22 - Dec 31 only)

Mon - Fri, 9am-5pm and 8-9pm
Saturday, 10am-3pm

Regular Drop-Off

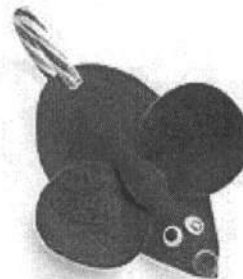
Mon - Fri, 1-4pm and 8-9pm

Storage space is a very real problem for us.
Please limit your donations to 5 bags.

Craft Corner

Merry Mice

Materials:
Red and green felt
Scissors
Glue
Pom-poms
Candy Canes
Googly eyes
Tape



1. Cut a 6 inch long teardrop shaped body from red felt. Cut 2 parallel slits that are 1 inch long and 1/2 inch apart.
2. For a pair of ears, cut a 5 inch long rounded bow-tie shape from green felt. This will be used to make the ears.
3. To put the mouse together, fit the ears through the slits in the body. Glue on googly eyes and pom-pom nose.
4. Finally, add a curly tail by slipping a candy cane beneath the mouse and tucking the straight end between the body

Secondary Suites Bylaw

On November 17, 2008 Public Hearing City Council heard the proposed amendments to the zoning bylaw to increase the opportunities for Secondary, Garage and Garden Suites.

The position put forward by Belgravia was that we support: increased density; increased housing mix by adding renters to our homes; 1 suite per home; and that location on the block is not a valid limitation. We did not support Permitted Use for all Secondary Suite applications, or that 1 additional parking space was required in all situations. We wanted owner-occupied (home owner must reside in part of the house) as a requirement. The intent is to increase density while preserving the integrity of mature neighborhoods like ours. This position is consistent with that of the Edmonton Federation of Community Leagues. I also raised concerns about the lack of density caps and licenses, lack of plan for enforcement and dispute resolution. Since little discussion has occurred within the community about Garage and Garden Suites I did not put forward a position.

At the conclusion of the meeting Council voted to send the Bylaw back to Administration, and directed them to further investigate and provide pros and cons of Discretionary Use, owner-occupied, parking, density, enforcement, and dispute resolution. It will be brought back to council on January 19, 2009.

Please refer to www.edmonton.ca/secondariesuites for background information on the bylaw or Planning and Development 780-496-3100 for information on converting your existing or developing a new suite.

www.belgraviaedmonton.ca contains a more detailed report.

Respectfully submitted, Gwen Berdan



Child care: caring help wanted

We live in Belgravia. I am looking for someone to help look after my three sons (10, 9 and 7) on Mondays and Tuesdays (and possibly Fridays) from approximately 3:30 to 6:00 pm. I am also looking for help (ideally from the same person) with driving the boys to and from their west-end school some days (vehicle supplied).

Qualifications: kind-heartedness, experience caring for children, reliability, a willingness to lend a hand with basic household chores, and (driving-wise, if applicable) solid driving skills and confirmation of a clear driving record.

Starting wage: \$12 and up (depending on experience)

I would be happy to provide character references for our family.

Please call me if you have any questions. If interested, please email me a resume or other summary of your qualifications. Thank you.

Michael Lema H: 780-435-7414
michael.lema@shaw.ca

Need To Care for Yourself?

I offer therapy for individuals, couples, and families. Therapy is an active process, like a journey of self exploration.

There are many reasons people try therapy: stress management, help for anxiety attacks and depression, addictions, personal and spiritual growth.

Jackson Mooney and Associates

Location: Belgravia

Call Jackson Mooney (780) 242-6064

Confidential Voicemail
 Flexible Rates and Times
 Enquiries Welcome



Christmas
Bureau of
Edmonton

To the single working mother struggling to provide her children with a Merry Christmas, you have helped lift some of the burden off her shoulders.

For the senior who has no family, you have shown them that someone cares.

For the many of Edmonton's less fortunate families, you have let them experience the joy and warmth of the Christmas Season that every child deserves.

Your donation helps ensure that everyone can experience the warmth and joys of Christmas.

Donations can be mailed to our office at:

Christmas Bureau of Edmonton

PO Box 16000

Edmonton, AB T5J 4B4

UPCOMING COMMUNITY LEAGUE EVENTS



Family Game Night
December 12, 2008
7-9 pm
Belgravia Hall

Families of all ages welcome!
Please bring your favorite family game to share with others.
Bring snacks if you wish.

If you wish to consider participating in a cookie exchange please bring in a dozen of your favorite Christmas cookies.

Adult Card Evening
January 9, 2009
7-9 pm
Belgravia Hall

Plan to come and enjoy an evening of cards and social interaction.
Games include but are not limited to Whist, Hearts and Crib

January 9th will be the first evening for this event followed by the first Friday evening in the following months:
 February 6, March 6

Your Community Contacts

President	Parker Fjeldberg	president@belgraviaedmonton.ca
VP/Civics	Martyn Unsworth	vicepresident@belgraviaedmonton.ca
Treasurer	Grant Hutcheon	treasurer@belgraviaedmonton.ca
Secretary	Gwen Berdan	secretary@belgraviaedmonton.ca
Membership	Therese Gaetz	membership@belgraviaedmonton.ca
Newsletter	Barb Fjeldberg	newsletter@belgraviaedmonton.ca
Hall Rental	Ron Maskell	hallrental@belgraviaedmonton.ca
Maintenance	Terry Kuzsyk	maint@belgraviaedmonton.ca
Transportation	Sandy Guilbert	transportation@belgraviaedmonton.ca
Programs	Yvette Maskell	programs@belgraviaedmonton.ca
Belfree	Will Bauer	belfree@belgraviaedmonton.ca
Past President	Rob Hutchinson	pastpresident@belgraviaedmonton.ca



ICEON
ICE CARVING FESTIVAL
WHYTE

VOLUNTEERS NEEDED

January 15–25th, 2008

The sixth annual Ice on Whyte Festival returns to Old Strathcona, January 15 – 25, 2009 and will again capture your imagination when art springs to life from frozen water. Once again we need the support of our volunteers to ensure the success of this festival.

Positions include: Ice Slide Sheriffs, Gate admission keepers and roaming information givers.

Hours of Operation are:

2 – 10 pm Monday – Friday and 10 am – 10 pm Saturday & Sunday

Volunteer Orientation will be held on Wednesday, January 14, 2009 at 6 pm

For further information contact: Shelly at shelly@iceonwhyte.ca or check online at www.iceonwhyte.ca

STRUCTURAL DAMAGE-- DUE TO LRT CONSTRUCTION IN BELGRAVIA????

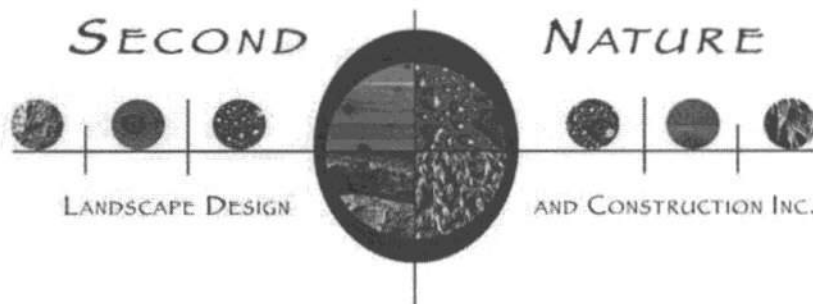
Has your home shown any visible signs of cracks either inside or outside? What action have you taken to address your concerns?

- Contacting the City of Edmonton Transportation Department?
- Contacting your insurance company? -- probably your policy does not cover this type of situation

We recently noted new cracks throughout our home on 75 Ave and have had the city's insurer out taking pictures.

One solution: Let's talk and share ideas. We can work together as a community when approaching the city about our concerns.

Contact: Louise 780 436-5606



7915-119 st. Edmonton AB T6G 1W6 (780) 430-6777
(780) 906-9057 cell

www.snaturedesign.com

e-mail: snature@shaw.ca

**Plan ahead for your spring or summer projects.
We have over 20 years of experience in residential
landscape design and construction.**

**Specializing in custom decks, fences and natural
flagstone patios and walks.**



What's happening at hulbert's?

wine wednesday

open 5 pm-11 pm

Featuring special selections of fine wines from around the world.

thursday night

open 5 pm-11 pm

house concert series

8 pm show time

A-list and touring performers in an up-close & intimate concert setting.

Advance tickets and current listings available at www.hulberts.ca

friday & saturday live music features

open 5 pm-11 pm
8 pm show times

The finest in jazz, soul, blues, roots, R&B, folk, and singer-songwriter. Entertainment fees in effect in the main room (after show time only).

sundays

open 10 am-10 pm

champagne brunch

10 am-2 pm

Fancy brunch? Gourmet made-to-order omeletes & crepes, and your favourite brunch and breakfast features. Champagne mimosas, too!

songwriter's stage

7 pm-10 pm

Edmonton's best veteran artists perform alongside aspiring up-and-coming talent in this unique fast-paced show of all-original music and fun, with a guest feature artist opening each week's show. No covercharge.

Join us on Friday, December 19 for a special Christmas concert featuring Skip Willis and his original Christmas songs, holiday favourites, and clever comedy.

Tickets are \$8 and children under 8 years are free.



hulbert's
a good place to meet

7601 115 Street
phone: 780 436-1161
www.hulberts.ca

original

*Original hand-crafted food &
all-original live music...
Interested?*

Have you heard? **hulbert's** recently received a letter from Alberta's Minister of Culture and Community Spirit, Lindsay Blackett, in recognition of its contributions to the province's arts and cultural communities.

We hosted an event in conjunction with the Alberta Choral Federation on Alberta's first ever Arts Day, on September 6, 2008.

Featuring four nights of original live music each week and a rotating display of visual art by local artists, **hulbert's** is proud to be actively involved in the advancement and promotion of arts in Edmonton.

Thank you for supporting what we do, and more importantly -- thanks for supporting the artists and performers who not only impress and entertain us with their talents, but motivate us with their courage and tenacity.

Join us for another unforgettable **hulbert's** New Year's Eve Murder Mystery -- ***Murder at the Deadwood Saloon.*** Tickets are \$99 and include dinner, dessert, entertainment, and real champagne at midnight. Details at www.hulberts.ca

See you soon!