

BELGRAVIA
COMMUNITY HALL
11604—74
AVENUE
EDMONTON

The Belgravia News



OCTOBER 2008

www.belgraviaedmonton.ca

Community League Meetings
are held on the first
Thursday of every month
at 7:00 PM.

Everyone is welcome to
participate. Please come
and help us to continue to
make Belgravia a wonderful
place to live!

Check out
our brand
new website !

COME CELEBRATE **Belgravia Community League's** **26th Annual** **PUMPKIN PARTY**



Sunday, October 26th
2-4 pm

Belgravia Community Hall

**All Belgravia Community League Members
Welcome!**

**Free Pumpkins for
Families in Costumes!**

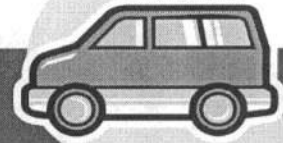
*****Please bring your own
carving utensils!!!***



"Pumpkins-for-a\$Toonie\$" for those not in costume or non-members

A Special Thank You to all of you who answered our call for help! Our phone was ringing off the hook with people willing to help canvas and our membership coordinator was found within days as well as our new web designer. Thank you to Terese Gaetz who is our new membership coordinator as well as Chris Martyniuk who has already designed a fabulous new website. To all who came forward eager to help out please come to our monthly meetings. Fresh faces = fresh ideas!

Transportation



Parking restrictions

In response to my question regarding parking restrictions in the last newsletter, a few people indicated they do not want parking restrictions on their street and others had questions regarding the parking options available to the community. So.... The community league will host an information session at the hall on October 27 where you can get answers to your questions from a Transportation Department representative. Please join us and help develop a strategy for dealing with the increased parking demands that will surely follow the opening of the 76th Avenue and South Campus LRT stations next April.

Edmonton Clinic

Any of you who have crossed University Avenue at 115th Street and tried to continue due north in the last month will have noticed that that is now impossible.

Don't worry – the signs informing you of the possible detours were ordered on September 3. Sadly, community requests on September 22 that at least small signs be put up temporarily have been ignored.

Here's the gist of the situation. You can choose between 114th Street and 116th Street for north-south travel until sometime in 2012. And, we were assured, that is not all that far away. If you are biking, the City has designated the sidewalk on the west side of 114th between University Avenue and 87th Avenue as a multi-use trail (meaning bikes are legal) until the new, improved bike and pedestrian route through the Edmonton Clinic site is reopened in four years.

Sandy Guilbert



Parking

Restrictions Community Information

Meeting

October 27, 2008

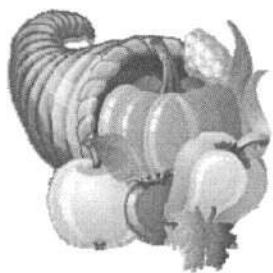
7:30 pm

Belgravia

Community Hall

Your Community Contacts

President	Parker Fjeldberg	president@belgraviaedmonton.ca
VP/Civics	Martyn Unsworth	vicepresident@belgraviaedmonton.ca
Treasurer	Grant Hutcheon	treasurer@belgraviaedmonton.ca
Secretary	Gwen Berdan	secretary@belgraviaedmonton.ca
Membership	Therese Gaetz	membership@belgraviaedmonton.ca
Newsletter	Barb Fjeldberg	newsletter@belgraviaedmonton.ca
Hall Rental	Ron Maskell	hallrental@belgraviaedmonton.ca
Maintenance	Terry Kuzsyk	maint@belgraviaedmonton.ca
Transportation	Sandy Guilbert	transportation@belgraviaedmonton.ca
Programs	Yvette Maskell	programs@belgraviaedmonton.ca
Belfree	Will Bauer	belfree@belgraviaedmonton.ca
Past President	Rob Hutchinson	pastpresident@belgraviaedmonton.ca



President's Message

Please have a look at our new website www.belgraviaedmonton.ca. After last month's newsletter I got a call from Chris Martyniuk of Hulberts who volunteered to build a website for the Belgravia Community on a volunteer basis. Please go have a look, in about a week he got up a first class website with lots of fresh ideas. As with any great website this is a work in progress please email Chris or myself if you have information to be posted or any thoughts to help us make this better. Another thank you goes out to Therese Gaetz who stepped up to be our membership coordinator. Please call or email her if you are able to help in the membership drive.

As noted in the transportation report Sandy has arranged for City of Edmonton officials to come and describe our options on a parking permit program. Please come and listen in as I think this problem will become significant when the new LRT station opens in the spring. I think another big issue we will have is increased traffic congestion in the afternoon hours as these vehicles try to exit our community.

Another area of traffic concern at 76 avenue and 114 street is automobiles blocking the pedestrian crossing on the west side of the LRT tracks. People may as well start to get use to stopping on the west side of this crossing as it will be mandatory once the LRT starts operation.

One final note is that the Newsletter submission deadlines will be posted on our new website. Please make sure to get your advertising and articles in on time as some of the information is time sensitive and we will be unable to hold the newsletter. I would also like to thank my wife Barb for the great work in getting this information together as well as the stress of continually pressuring us to get our stuff in on time.

Infants to Preschoolers with their caregivers are welcome to join

St. Paul's Playgroup



We are an informal, non-denominational, co-operative group that meets on Monday mornings from 9:30 to 11:30am in the basement of

St. Paul's United Church, 1525—76 Ave.

Children have access to a toy filled playroom and a large open area that provides space for riding toys and room to run, chase, and make noise—an outlet for winter energies!

For further information call:

Natalia 436-1243 or e-mail ncoutinho@shaw.ca





Belgravia School Fun Auction

Belgravia is a small but tight knit community with a small but wonderful school. The annual Parent Council auction raises funds that provide opportunities for our children that they would not otherwise have. To that end we are looking for donations of goods or services for the auction on November 14th.

We would be grateful to receive toys, books, art, crafts, food, clothes or collectibles.

Consider making a donation of professional services which may expand your client base - dental, medical, accounting, health and beauty, home repair, pet sitting, landscaping.

Can you donate a lesson (or more) in music, sports, cooking, scrapbooking writing or art, or tutor academic subjects?

Donations must be received by November 3rd to allow time for processing.

Our community is home to many talented and creative people. We hope you will use those abilities in donating the fun and fanciful, playful or practical, wild and woolly.

Call Judith at 780 451 5210 or email jfris@shaw.ca

Looking for something fun to do this month...visit a corn maze!



Something nearby...

Edmonton Corn Maze

Located only minutes from West Edmonton in Parkland County, the Edmonton Corn maze is very easy to find.
www.edmontoncornmaze.ca

Something a little further away...

Lacombe Corn Maze

4.8km (3m) west of Lacombe.
Fri/Sat Spook Nights all Oct.
www.lacombecornmaze.com

Men & Relationships: Concentrated Weekend

(Registrations are now being accepted for the Fall 2008 session)
Based on the feedback of past participants, the experience is flexible and relevant.

The format consists of real life presentations by the facilitators, reflection time and small group discussions.

Participants engage in several self esteem/personal awareness exercises and are encouraged and supported to look honestly at their lives/actions and begin to identify needed changes. The sessions are particularly beneficial for men who feel empty, alone or who are struggling with parenting, separation, divorce, intimacy and communication. During the weekend, many men choose a new direction for themselves, develop action plans and take the first steps to improve their participation at home, at the office and in the community. This is an excellent and unique opportunity for men to reconsider their role in society without judgement and criticism.

Sessions are facilitated by professional Social Workers and experienced men's group members.

Men & Relationships: Concentrated Weekend
November 7th – 9th, 2008

For more information or to register contact:

Dean McKellar, M.S.W., R.S.W. 780-944-5542

Tony Arcand, B.S.W., R.S.W. 780- 944-5543

NEW

Belgravia Hall New Rental Terms

Effective October 15, 2008

*For renters, not regular User Groups

The terms and rates for hall use have not been reviewed in a long while. Hall Rental Manager Ron Maskell reviewed our terms and also polled 6 south-west community leagues. He confirmed that our rates were out of alignment with those of other groups, our terms and cleaning policies unclear. To maintain consistency and provide clear direction the following terms were approved at the October 2, 2008 Belgravia Community League Executive Meeting.

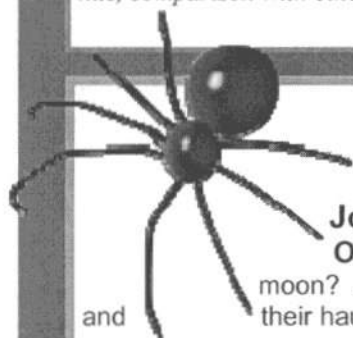
Rates:

	BCL Members	Non-BCL Members
Adult Functions (14 years and up)	\$100 / 4 hrs + \$20/ additional hr	\$175 / 4 hrs + \$30/ additional hr
Children's Functions (13 years and below)	\$75 / 4 hours + \$20/ additional hr	\$125 / 4 hrs + \$30 / additional hr
Damage Deposit	\$400	

Cleaning, if rental terms are not met, \$60 / hr billed in 1 hour increments

Payment of Damage Deposit is required to secure the booking. This cheque will be cashed upon receipt. A cancellation fee of 50% of the damage deposit will be charged if the booking is not kept. Prior to the booking date, the renter must sign the rental agreement and will be given keys. A community league membership MUST be provided at this time. The rental agreement is on the website for review. If after the rental the hall rental person determines that additional cleaning is required, he will make arrangements and pass the costs on to the renter. The keys must be returned directly after the rental, as per the agreement. A charge of \$20 per day for outstanding keys will be charged. Once all conditions satisfied, Belgravia Community League will send a cheque with the balance to the renter

**User Groups rates and terms are also being reviewed. Opportunity for input will be given. Aspects being considered are service to the community, numbers served, frequency and duration of use, impact on the hall, potential to generate revenue, comparison with other halls, and services in kind.*



"Spooktacular" Things to Do this Halloween!

John Janzen Nature Centre www.edmonton.ca/johnjanzen

October 25, 26 Animal Spooks: Who's that creeping around by the light of the moon? Join us this spooky time of year to find out more about Edmonton's own animal spooks and their haunts. You can even try your hand at a spooky craft- if you're not too afraid that is.

John Janzen Nature Centre Presents - Nightly Neighbours: October 31 Why do coyotes howl? Are bats really scary? Just how do flying squirrels fly? Spend the spookiest day of the year learning about the nocturnal residents of Edmonton's river valley. We'll put to rest some myths and learn to appreciate our night neighbours. Costumes are welcome!

Edmonton Ghost Tours Presents - 2008 Halloween Tour Dates October 13- 30, 2008 www.edmontonghosttours.com * Old Strathcona - Whyte Ave. All walks start at 7:00pm and last for about 1 frightful hour - less if you run really fast!

Valley Zoo Presents: Boo! At The Zoo Sunday, October 26, 2008
www.valleyzoo.

Fort Edmonton Park Halloween Spooktacular-October 24 -25
www.fortedmontonpark.ca— an extravaganza of Halloween fun for the whole family! Encounter mystery and allure around every corner as you make your way around the park. Spooktacular is a safe place for children and their parents to celebrate Halloween.



TRICK OR TREAT!

High Energy Treat to Hand Out this Halloween: give the little ghouls in our neighbourhood a gift certificate for a **FREE SWIM**.

Howlin Halloween Handout is a recreational swim certificate that is fun, safe and healthy too!

Handouts are available at all City of Edmonton Leisure Centres including Kinsmen Sports Centre and good until Nov 30. Call 496-SWIM for more information.

Newsletter Advertising Rates

Size	BCL Member	Non Member
Business card	\$15.00	\$25.00
1/4 page	\$25.00	\$35.00
1/2 page	\$45.00	\$60.00
Full page	\$75.00	\$100.00

Do you enjoy working with school age children?

Belgravia out of school care (BOSC) is in the university area and is looking for mature, reliable individuals that enjoy playing with kids, for a variety of shifts. You must be able to obtain a security clearance. Our website is www.ebosc.ca. We look forward to hearing from you. Please contact our Administrative Director Jennifer Tkachuk for more information, via email: belgravia.osc@gmail.com



Ladies, are you in need of relaxation?
Give yourself a well deserved hour of nurturing and relaxation.

Mady Mooney is a Registered Massage Therapist and practices in the Belgravia area. Massage Therapy, Cranio-Sacral Therapy, Foot Reflexology and Reiki are offered. Clients with extended health coverage are able to use their health plan.

Art Therapy sessions are also available as part of a supervised practicum.

Call Mady at 242-6065 (Edmonton) or e-mail mamooney@telusplanet.net for your appointment or information.

Needed: Belmac Youth Soccer Coordinator - immediately!

As I have indicated in June and earlier this month, Belmac will need a new soccer director for the '09 season. Please see the job description below.

Belmac Youth Soccer Director - Job Description

1. Attend SWEMSA meetings beginning in October. It is not necessary to attend every meeting but the AGM in October is NB.
 2. Advertise notices for registration in Belgravia/McKernan newsletter
 3. Set up registration time/ place for February '09
 4. Coordinate teams based on #'s.
 5. Find coaches for teams.
- Finalize documents with SWEMSA and EMSA

Contact:

Dianne Gillespie (outgoing soccer director)
belmacsoccer@telus.net



News from Our School

The results are in from the Provincial Achievement Tests (PATs) and Belgravia students have once again proven their excellence. They did extremely well and consistently scored above the provincial average in all subjects.

Both students and parents were surveyed in May 2008. Some highlights from the students were 100% satisfaction with the teachers' helping them when they needed it and all felt that their school work was interesting.

The parent surveys were also very positive indicating satisfaction with the cleanliness of the school; the information that they receive about behavior expectations and the welcome they receive at the school. They were also very satisfied with the emphasis placed on the 4 core subjects: Language Arts, Math, Social Studies and Science.

Students took part in the Terry Fox Run and raised \$315. In our small way we have contributed to cancer research in our country and we know that our gift will make a difference in someone's life.

Parent Dawn Macdonald made a lovely vegetable soup from the harvest in the school garden which was enjoyed by all staff and students.

Please do not forget our upcoming Bake Sale on October 14th and our Bottle Drive on October 18th. Thank you for your support.



Rummage Sale St. John's Anglican Church 1111-57 Ave

Friday October 24th
6-9 pm
Saturday October 25th
9am-12 noon



Special "fill up the bag" bags for \$10 and \$3 are sold on Saturday morning.



DANCE'N MORE! for KIDS

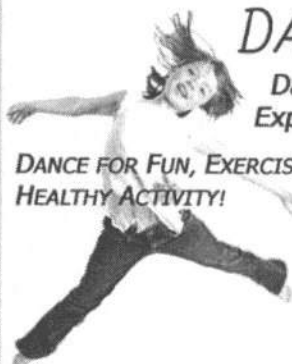
Dance, Movement, & Performing Arts
Experiences for Girls and Boys ages 4-9

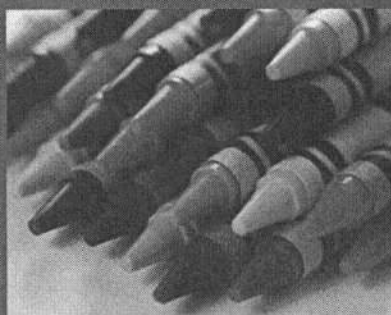
DANCE FOR FUN, EXERCISE,
HEALTHY ACTIVITY!

NEW UNIQUE Program!

EVERY CHILD learns many dance forms!
Integrated with other Arts Activities
A Fun, Creative Learning Experience!
Full Program plus Summer Classes

Dance'n More! for Kids Instructor: Vanessa Harris
Location: University Area 780.436.1590 vandot2@telus.net





Craft & Activity Corner

Brought to you by
Belgravia
Kindercare

Yummy Pumpkin Dip

2 8-ounce packages cream cheese, softened
1 large 30-ounce can of pumpkin
4 cups powdered sugar
2 teaspoons cinnamon
2 teaspoons ginger

Whip together and serve in hollowed out small pumpkin. Serve on a plate covered with black licorice "worms" or any Halloweenish candy such as candy corn. On the side place ginger snaps for dipping.

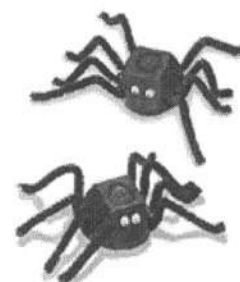
Toasted Treats

pumpkins seeds
shredded coconut
slivered almonds

Rinse the pumpkin seeds and remove all pumpkin. Dry on paper towels. Spread pumpkin seeds, slivered almonds, and coconut onto a shallow baking pan. Bake at 350F degrees for 5 to 10 minutes until golden.

Egg Carton Spiders

Empty egg carton
Black paint
Black pipe cleaners
Googly eyes
Glue
Push pin or paper clip



Cut the cups off an empty egg carton and place them on newspaper. Paint the cups, inside and out, with a coat of black acrylic paint.

Use the end of a paper clip or a pushpin to poke four holes along the bottom edge on one side of the cup.

Poke matching holes on the opposite side of the cup.

To make fuzzy legs, cut four black pipe cleaners into 7-inch lengths. Thread a pipe cleaner through one of the holes, into the cup, and out the corresponding hole on the other side. Make sure the ends protrude an equal length from both sides of the cup and bend them upward at the base of the spider's body. Fold in the opposite direction midway down the legs to create knees and bend the tips to make feet.

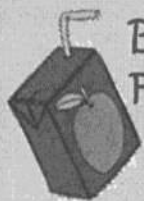
Finally, glue on googly eyes.

Kindercare Spaces Available

Would your child like to have more fun with their new friends? Would you like to have a little more time to run some errands? If so, try Belgravia out of school care's (BOSC) Kindercare program. There are spots available. Low student-teacher ratios. Choose part time or full time. Kindercare is a safe, nurturing and enriching environment that can help children transition from half day to a full day of schooling. The program is offered from 11:25 to 3:40, and the children are met by the Kindercare Supervisor at the school and are escorted to the hall for lunch and play.

If your child attends another school, bussing must be arranged by parents.

Please contact Jennifer Tkachuk at the Belgravia Community hall 780-437-1866, or belgravia.osc@gmail.com to ask for a registration package. For more information about Kindercare programming ask for Shauna or Jeanette.



Belgravia School Fall Bottle Drive

Saturday
October 18th

Pick up time starts at 9:00 am

**look for our flyer in your mail

WANTED

WOMEN BRIDGE PLAYERS

Monday and/or
Friday

12:45 to 3:15 p.m.

Belgravia Community Hall

Monday contact: Nancy Bourassa
436-7968

Friday contact: Bev Hoyles 436-2597

Need To Care for Yourself?

I offer therapy for individuals, couples, and families.
Therapy is an active process, like a journey of self
exploration.

There are many reasons people try therapy: stress
management,
help for anxiety attacks and depression, addictions,
personal
and spiritual growth.

Jackson Mooney and Associates

Location: Belgravia

Call Jackson Mooney (780) 242-6064

Confidential Voicemail
Flexible Rates and Times
Enquiries Welcome

♪ PRIVATE SINGING INSTRUCTION ♪

BEGINNER AND EXPERIENCED SINGERS WELCOME!

- Singing Styles Flexible: Musical Theatre,
Pop/Contemporary, Classical (and others)...
- Private and Semi-Private (small group) Classes
- Reasonable Rates
- Also Audition and/or Performance Preparation
- Also Speech, Monologue/Scenework

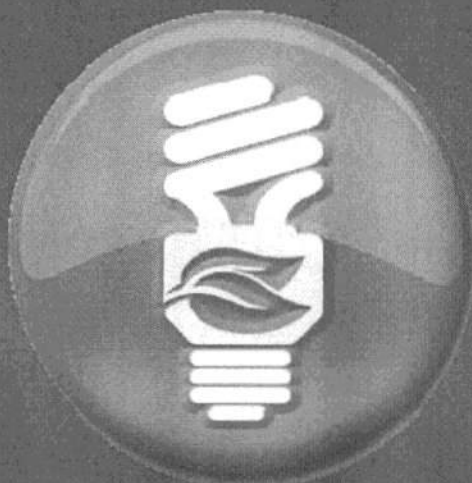
♪ Instructor: Vanessa Harris ♪

Location: University Area 780-436-1590 vandot2@telus.net



Membership News

Terese Gaetz,, our new membership coordinator, has jumped right in and the Membership Blitz is currently underway. If you did not purchase your membership at the Playground Opening on September 27th, don't despair because canvassers will soon be knocking at your door. If by chance you are missed please contact Terese at **436-1918** or at membership@belgraviaedmonton.ca and she will make sure that you have the opportunity to obtain a membership.



Project Porchlight is looking for volunteers!

Project Porchlight is a not-for-profit, energy efficiency campaign brought to you by the Government of Alberta, EnCana Corporation, and the City of Edmonton. We're promoting energy conservation in Edmonton by handing out 132,000 free energy efficient compact fluorescent light bulbs to residents of Edmonton and we need your help. If you are interested in volunteering to deliver bulbs on your street or in your apartment/condo complex please visit our website at www.projectporchlight.com, call **780-497-0510** or email lauren@onechange.org to speak with Lauren, one of our campaign coordinators. Delivering only takes about two hours and is a great way to do something positive for your neighbours and the planet alike! Remember:

Simple actions matter, so if you can change a light bulb, you can make a difference.

WALK WITH THE ANGELS

The Jeff Allen Gallery
Strathcona Place Senior Centre
10831 University Ave.

October 7 to October 30, 2008

Reception October 8 6:30-8:30 PM

Explore the unique fantasy of angels, the realism of the animal world and the beauty of floral life as seen through the eyes of Sherry Stewart. Come and enjoy this unusual and diverse exhibit. Meet and chat with this talented young artist at her reception. Everyone is welcome.

Best viewing hours are 11:30 AM to 1:00 PM and 3:00 to 4:00 PM
Centre open: Monday through Friday, 9:00 AM – 4:00 PM



BCL Bylaws and Policies

In reviewing our most current (1966) Belgravia Community League Edmonton Bylaws we were relieved to note that indeed, "Members of the female sex shall have equal rights to those of the male sex; and shall be eligible for any office in the League."

The Bylaws are being revised and changes will be ratified at the 2009 AGM. Board members are elected or acclaimed and may vote on league matters inside and outside of AGM. They may not be paid positions. These positions include Chairs of Transportation, Housing and Development, Civics, Programs, Fundraising, Membership, Hall Maintenance, and Hall Rental as well as the Core Executive of President, Vice-President, Treasurer, Secretary, and Past-President. The President does not have a vote except in the case of a tie, in which case he/she casts the tie-breaking vote. **Term of Office** – All Board members shall agree to a 2 year term. To maintain continuity term conclusion dates will be staggered.

Executive meetings are held monthly and are open to all community members. Minutes and agendas will be posted on the website. Standard agenda format is followed with time given to each board member, followed by Committee and other reports. All reports are assumed to be "report only" with opportunity for questions, unless otherwise identified.

- a.) For Non-voting members, or for board members who request additional time to the standard 3 - 5 minutes, Send "Request to Speak" note to secretary, (or to the board person to whom they are responsible, who will forward item) one week in advance of monthly meeting date. That allows board to prepare for the item. To be fair to all attendees, failure to comply with time lines may result in item not being put on the agenda, discussion cut short, or for decision making tabled to a subsequent meeting.
- b.) Identify the item as Report Only, Request for Discussion, Request for BCL Funding Assistance or any combination of above. Identify how much time you require to present and have discussion on item. Attach any supporting documents.
- c.) Issue tentatively scheduled by secretary, and requesting member is given an indication of what the time the issue will be heard on the agenda. In some instances items may be time-specific. An example is CRC's request to be scheduled at 8:30 to accommodate her need to attend another community leagues meeting the same night.
- d.) Secretary will review item and any supporting documents. She / he will highlight issues arising for President's consideration and forward information to President.
- e.) President or his / her designate will review documents. Will respond to, or seek clarification from person submitting request or will merely request secretary to forward supporting documents to Voting members. After discussion with member, President may instead determine that item should not be on the agenda. He / She will inform member and will direct Secretary to not include item on the agenda.

Submitted Parker Fjeldberg and Gwen Berdan

What's happening at hulbert's?

wine wednesday

open 5 pm-11 pm

Featuring special selections of fine wines from around the world.

thursday night house concert series

**open 5 pm-11 pm
8 pm showtime**

A-list and touring performers in an up-close & intimate concert setting. Advance tickets and current listings available at www.hulberts.ca

friday & saturday live music features

**open 5 pm-11 pm
8 pm showtimes**

The finest in jazz, soul, blues, roots, R&B, folk, and singer-songwriter. Entertainment fees in effect in the main room (after show time only).

sundays champagne brunch

**open 10 am-10 pm
10 am-2 pm**

Fancy brunch? Gourmet made-to-order omeletes & crepes, and your favourite brunch and breakfast features. Champagne mimosas, too!

songwriter's stage

7 pm-10 pm

Edmonton's best veteran artists perform alongside aspiring up-and-coming talent in this unique fast-paced show of all-original music and fun, with a guest feature artist opening each week's show. No covercharge.

We've got an exciting live music lineup this fall, and there are still some prime dates available for exclusive holiday party bookings!

Visit our website at www.hulberts.ca for full details!



hulbert's
a good place to meet

7601 115 Street
phone: 436-1161
www.hulberts.ca



celebrate original

*Original hand-crafted food &
all-original live music...
Interested?*

Featuring four nights of original live music each week and a rotating display of visual art by local artists, **hulbert's** is proud to be actively involved in the advancement and promotion of arts in Edmonton.

Thank you for supporting what we do, and more importantly-- thanks for supporting the artists and performers who not only impress and entertain us with their talents, but motivate us with their courage and tenacity.

Our "Hej hulbert's Kräftskiva" Swedish Crayfish Party on September 27 was a tremendous sold-out success thanks to the eager participation of folks from the Scandinavian communities and our surrounding neighbourhoods.

We have an exciting fall line-up of entertainment and there are some prime dates still available for exclusive bookings and holiday parties. Be a holiday hero and book your office or group event with **hulbert's**.

We guarantee it will be deliciously hassle-free!

And don't forget our new fall menu featuring delicious original hand-crafted food items such as Bourguignon Chapeauté!

See you soon!