



### **In this issue:**

President's Message - p3  
Belgravia Community Hall News - p6  
City of Edmonton Updates - p7  
Belgravia School Page - p8  
Message from Ben Henderson - p10

### **Belgravia Community Hall**

11540 73 Ave  
Edmonton, AB T6G 0G1  
BCL is a member of the Edmonton Federation of  
Community Leagues ([www.efcl.org](http://www.efcl.org))

### **Visit us online:**

[www.belgraviaedmonton.ca/](http://www.belgraviaedmonton.ca/)  
@belgraviaYEG (Twitter)  
[belgraviaedmonton](#) (Facebook)

### **Advertise in the belgravian!**

Please contact:  
[adsmanager@belgraviaedmonton.ca](mailto:adsmanager@belgraviaedmonton.ca)

### **Next Submission Deadline:**

Dec 19, 2018

### **Banner Photo:**

Season Greetings!  
Photo: Miles Parenteau

### **Good News!**

BCL has fully discharged all financial obligations related to hall renewal. The Belgravia Hall Renewal Committee, operating under terms of reference provided by the BCL board, has officially completed the design and construction of the renewed Belgravia Community Hall!

The BCL board has disbanded the Belgravia Hall Renewal Committee.

### **Gracious Goods Cafe Open Mic Sunday nights 5-7pm 7601-115 Street**

All musicians are invited to come try out Open Mic in a comfortable environment. We host Open Mic almost\* every Sunday night and love inviting new musicians or featuring accomplished musicians.

It is a very accepting and easy crowd. Please spread the word or join us if you are interested in playing.

\*Please check FaceBook GGOPenMic for time confirmations, more details or to reach out to Ruth.

### **Contact:**

RUTH Open Mic Host  
[ruthe.sjoberg@gmail.com](mailto:ruthe.sjoberg@gmail.com)  
780-237-6730

2017 - 2018 BCL Board & Related Committee Chairs		
Past president	Kevin Klein	pastpresident@belgraviaedmonton.ca
President	Michael Cohen	president@belgraviaedmonton.ca
Vice president	Cory Dawson	vicepresident@belgraviaedmonton.ca
Secretary	Joanne Wynn	secretary@belgraviaedmonton.ca
Treasurer	Barry Edgar	treasure@belgraviaedmonton.ca
Memberships	Susan Andrew	membership@belgraviaedmonton.ca
Facilities	Marcel Huculak	facilities@belgraviaedmonton.ca
Hall rental coordinator	Jeanette Boman	hallrental@belgraviaedmonton.ca
Rink manager	Jim Sawada	rinkmanager@belgraviaedmonton.ca
Arts park team leader	Kathy Goble	facilities@belgraviaedmonton.ca
Programs	Cameron McGregor	programs@belgraviaedmonton.ca
Belgravia playschool chair	Monika Fouad	playschool@belgraviaedmonton.ca
Made in belgravia	Jeanette Boman	mib@belgraviaedmonton.ca
Pumpkin party, BCL BBQ, Casino	Reg & Jane Norby	norby@shaw.ca
Belmac soccer coordinator	Linda Cameron	lcameron2002@yahoo.com
Communications	Imogen Sellman	communications@belgraviaedmonton.ca
Belgravian editor	Miles Parenteau	editor@belgraviaedmonton.ca
Ads manager	Lena Jones	adsmanager@belgraviaedmonton.ca
Distribution team leader	Susanne Rowe	editor@belgraviaedmonton.ca
BCL web page manager	Tim Janzen	webmaster@belgraviaedmonton.ca
Planning & place	Susan Kamp	planning@belgraviaedmonton.ca
transportation committee	Jordan Hoffart	transportation@belgraviaedmonton.ca
Belgravia watch	Richard Law	belgraviawatch@gmail.com
Neighbourhood Resource coordinator	Kate Russell	kate.russell@edmonton.ca
Belgravia Elementary school Liaison	Michael Cohen	president@belgraviaedmonton.ca
U of A community consultation		info@belgraviaedmonton.ca

## the belgravian

### Published by the Belgravia Community League,

the belgravian is a greyscale newsletter that reports on community news, programs and events within the Belgravia area.

### Frequency:

We publish 10 issues per year.

### Monthly distribution

We deliver approximately 960 copies to homes in Belgravia.

Copies are also available at Gracious Goods and Belgravia Hub

### Advertising:

Advertising for businesses located outside Belgravia, McKernan, and Windor Park are limited to business card size.

### Editorial submissions:

Submissions are subject to editorial discretion and available space. To submit an article please email editor@belgraviaedmonton.ca

### Online archive:

belgraviaedmonton.ca/newsletters

# President's Message

## What lies beneath

Your sewage line, that's what. Chances are it exits your basement, runs under your backyard, and joins up with tributary of the mighty River EPCOR in the back alley. And as many a Belgravian has learned over the years, the health of your property's sewage line is not to be ignored.

Back in 2007, when my wife and I were recent Belgravia arrivals, the basement toilet in our vintage 1959 house began to back up. After no amount of plunging did the trick, someone suggested that we ask EPCOR over to have a look at the sewage line. What ensued, those of you experienced in the matter will know, was a sewage colonoscopy. A long-settled lid was pried from an access point underneath the guestroom carpet (don't tell my mom), and down went a camera on a cable. I was invited to view the live action on a small TV screen. The scenes from the deep reminded me of childhood episodes of Jacques Cousteau, the ones where the crew descends into murky depths as clouds of sediment and unknown accretions drift past the camera.

The EPCOR team, however, was able to make more sense of the grainy footage. Tree roots had grown their way into the line, which was also partially collapsed in a couple of places. Back in '59 some kind of pliable material (tar paper?) was apparently all the rage in sewage line construction. The team withdrew the camera, sent down an auger, and cleaned out enough of the roots to buy us a little time. The next step was to get the line fixed. We went with a trenchless procedure (think arthroscopic surgery), where a liner is inserted at one end of the line and then expanded in situ, obviating the need for excavating the backyard and the ensuing nasty scar. The details were largely lost on me, except for the one about a LIFETIME GUARANTEE, which enabled me to erase the whole ordeal from my memory, confident that I would never again have to think about it.

So, there we were in late August of this year, leading our usual lives of happy domesticity. Yeah, the basement toilet had been flushing a little slowly of late, but I'm OK living with a few imperfections. It had been a busy Saturday of wastewater generation. A few loads of laundry, a dishwasher run, and later

in the evening someone finished up in the tub and pulled the plug. At that point my wife suggested I check in on our (recently renovated!) basement. And there was the deluge, accretions and all, coming up out of the floor drain.

Every available rag in the house was soon thrown onto the spreading effluent, bringing it under control within a three-metre radius of the source. I rummaged through the internet for the emergency phone number of the insurance company. Within minutes they had connected me with a disaster recovery company, where a voice well trained in soothing panicked clients assured me they'd be there in the morning. Another internet search yielded a plumbing company with a sewage line auger willing to use it on a Sunday. This is where things got complicated.

The plumber's camera confirmed that roots had once again entered the sewage line. And they were having such a good time of it that his auger was unable to fully remove them. He suggested I call EPCOR because (a) their auger might be stronger and (b) the roots appeared to have entered at a point beyond our property line, implying that the invasion had begun on EPCOR's territory. Regardless, I owed him \$450. While I called EPCOR, the disaster recovery team was busy spraying disinfectant and hauling out chunks of our relatively new carpet and drywall.

EPCOR arrived later in the day and again invited me to enjoy live footage of the camera down the line. They agreed that the point of invasion was close to the property line, and that technicians at HQ would have to review the footage to make a final determination. Their suprauger then completed the root extraction and I was told that a \$400 charge would appear on my next EPCOR bill, unless it was confirmed that the problem was on their turf. The company that installed the liner with the lifetime guarantee assured me that their product couldn't possibly have been at fault and encouraged me to keep after EPCOR. Several days and phone calls later, EPCOR confessed that the roots had indeed entered through a defect in their line but that it might take them a year or more to find time to repair it. I'm sure the tree roots are overjoyed.

Our insurance paid for the cleanup and repairs, although there was the small matter of losing our

no-claim discount. Surely the insurer would understand that the fault lay with EPCOR and perhaps seek retribution from them instead of us? I might have had a case, mused our claims representative, if only I had called EPCOR immediately upon noting the slow toilet instead of allowing the tragic delay... The Epcor claims department murmured similar regrets. Then our claims representative asked me for the contact information for the EOCOR claims representative, wondering if EPCOR might reimburse the insurance company for the cost of our basement repairs! I might not know sewage lines, but I know chutzpah.



**The University of Alberta Forest Society**  
**2018**  
**Christmas Tree Sale**

**November 26<sup>th</sup> to December 21<sup>st</sup>**

Corbett Hall Parking Lot- 8204 114 Street Edmonton  
 Monday-Friday: 3pm-9pm  
 Saturday & Sunday: 9am-9pm  
 10% of all proceeds will be donated to the United Way

## Visit Charlotte at the Royal Alberta Museum

Charlotte, a beautiful jewel spider, was living in a garage dome window belonging to Belgravia residents, Ron and Jean Lawson.

The spider was living comfortably since June 20th, but with the coming of the cold weather, it was decided to find Charlotte a new home.

Mr. Peter Hewley at the Museum gladly excepted Charlotte. Last report, Charlotte was still alive, thriving and on display.



## Advertise with us!

Select from three ad sizes. Special deals for BCL members.

Ad size	BCL member	Non-member
Business card ad	\$25	\$50
1/4 page ad	\$50	\$75
1/2 page ad	\$75	\$100

**Business Card**  
9.5cm x 6.4 cm

**1/4 Page Ad**  
9.5 cm x 12.7 cm

(Not available to businesses outside Belgravia, McKernan & Windsor Park)

**1/2 Page Ad**  
19 cm x 12.7 cm

(Not available to businesses outside Belgravia, McKernan & Windsor Park)

### File types:

We accept ads in PDF, JPG and TIF formats.

### Image resolution:

Images must be 200dpi at 100% (size)

### Payment methods:

We accept payment by cheques payable to the Belgravia Community League

### Rates per issue:

We offer a 10% discount for multiple ads paid in advance.

**Contact:** [adsmanager@belgraviaedmonton.ca](mailto:adsmanager@belgraviaedmonton.ca)

## Volunteer position: Belgravia-McKernan children's soccer coordinator

Each year dozens of kids in McKernan and Belgravia between the ages of 4 and 18 play recreational outdoor and indoor soccer with the Edmonton Minor Soccer Association (EMSA).

After many years of service to our communities, our longtime Belmac volunteer soccer coordinator is stepping down. We are looking for someone to replace her. Duties of the coordinator include recruiting players and coaches, collecting fees, managing equipment, and allocating players to Belmac teams or teams in neighbouring communities.

The coordinator can rely on the staff at EMSA and the southwest office (SWEMSA) for extensive training and support.

If you would like more information, please contact Michael Cohen at [president@belgraviaedmonton.ca](mailto:president@belgraviaedmonton.ca)

## Belgravia Co-operative Playschool is fundraising with Purdys Chocolatier, just in time for Christmas!

If you'd like to support us through purchasing some very sweet Christmas gifts for friends, family and yourself, please visit the webpage below:

<https://fundraising.purdys.com>

Campaign Name: Belgravia Co-operative Play School

Campaign number: 23831

After you've signed in you can buy our amazing chocolates or invite others to join and support our Fundraising Campaign.

### MASSAGE THERAPY:

*Pain Relief is in sight...*

#### Individually Designed Treatment Plans

- Deep Tissue & Accupoint Massage
- Therapeutic Exercise • Myofascial Release
- Tension • Stress • Prevention • Relaxation • Back & Neck Pains
- Flexibility • Pain Relief • Whiplash Injuries • Frozen Shoulder
- Migraines • Headaches • Obesity Issues • Arthritis • Accident
- Poor Posture • Complex Regional Pain Syndrome • Exercises
- Strengthening • Fibromyalgia • Lewy Body Dementia
- Balance Nerve & Muscle Tension • Sciatica

### FOOT CARE: Corns • Callus • Heel Cracks

Thickened Deformed Discolored NAILS

### LASER for Fungus Free Feet

Trained in Germany, **Maria Krieg** works wonders on aching backs as well as on needy feet.

People of ALL ages & lifestyles benefit from Massage Therapy.



## BACK BASICS MASSAGE THERAPY & FOOT CARE

CARE FROM HEAD TO TOE SINCE 1981

There is no substitute for experience.



\*Purchase a Gift Certificate today & ask for your Belgravia Benefit!

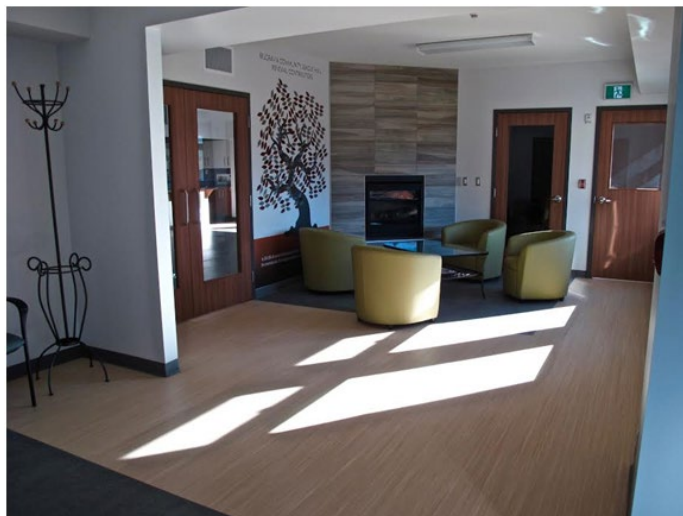
**Maria Krieg, RMT • 11610 - 75<sup>th</sup> Ave, Edmonton • [www.backbasics.ca](http://www.backbasics.ca) • Phone: 780 - 436-8059**

## BCL Hall Community Living Room

One of the hopes in designing and building our new hall was for it to become a place where Belgravia residents could gather for all kinds of reasons and for all ages and stages of life; programs for children, young families, teenagers, middle agers and seniors. These programs are developing now and the hall is used in one or another way every day of the week now.

A goal we still wish to achieve is making more use of the Upper Hall Community Living Room. In fact, that is one of the benefits of having a BCL membership: access to the Community Living Room for free! With the fireplace, coffee table and chairs, we always hoped this could be another 'bumping into each other' space in Belgravia.

While the BCL isn't at the stage where we can hire a hall manager, several of us have talked about have a 'roster' of people who would be willing to volunteer a few hours every week or two to mind the BCL Office and Community Living Room. This could include answering the



phone, selling memberships for people who missed the membership drive, showing hall renters the space, helping with program registration and collection of fees, and making coffee or tea for people just dropping in to chat. If this interests you, please contact Jeanette Boman ([hallrental@belgraviaedmonton.ca](mailto:hallrental@belgraviaedmonton.ca)) ... and we'll get our hall working at it's best for the whole community yet!

## Belgravia Holiday Marketplace and Gallery of Artists

**Thursday, December 6, 2018, 7:00-9:00 pm at the BCL Hall.**

**1. Marketplace** - 17 participants registered. It's a great time to do some holiday shopping, talk with your neighbours, view original creations by Belgravia residents and have some holiday treats!

**2. Gallery of Artists** - Drop by and meet the local artistic talents and their fine artwork.

There will be refreshments and Christmas goodies, music and activities for the kids!

**URBAN SKY**  
DEVELOPMENTS CORP

**780.504.0005**

**VIRGINIA PARK - NOW SELLING**

STUNNING NEW HOMES ON RIVER VALLEY FRONTAGE

**BUY NOW TO SELECT YOUR FINISHES**



**WIDER LOTS**  
CUSTOM FINISHES  
ROOF-TOP DECK  
3 BR + BASEMENT



7574B-110 AVE

7574A-110 AVE

ST.GEORGE'S ANGLICAN CHURCH, 11733 - 87 Ave.

Has concert/recital space for music teachers and students

- Yamaha C2 Grand Piano
- Beautiful, intimate setting with seating capacity of 150
- Good acoustics
- Proximity to U of A Campus
- Intermission/reception space available

For more information, please contact David Cass ([d.cass@ualberta.ca](mailto:d.cass@ualberta.ca))

## City of Edmonton Updates

### Let's Talk Again: Rebooting Your Bus Routes

13 drop-in Workshops: Oct 25 - Dec 7

Make sure you check out the final draft of the proposed new bus routes coming in 2020. The City presented a new draft bus network this spring and asked for your feedback. The transit planning team spent the summer reviewing thousands of comments and made changes to many of the proposed routes to better meet your needs.

For example, some of the changes include:

- Adjusting routes so most people are within a 5-7 minute walk to a bus stop.
- Adding seniors' community bus routes.

Visit [edmonton.ca/newbusroutes](http://edmonton.ca/newbusroutes) to find a workshop in your area or fill out an online survey to share your perspectives on the final draft network.

### New Rules for Smoking Cannabis and Tobacco in Public Places

City Council voted on new rules for smoking cannabis and tobacco in public places, effective Oct 17, 2018.

Smoking is not permitted within 10 metres of:

- doorways, windows and air intakes of buildings; Patios; Bus stops;

In addition, smoking is NOT allowed in:

- any patio or building; Parks containing playgrounds, sports fields, skate parks, bicycle parks, outdoor theatres, outdoor pools, outdoor spray parks, seasonal skating rinks or off-leash areas;
- properties containing schools or childcare facilities.

For more information: [edmonton.ca/cannabis](http://edmonton.ca/cannabis) and [edmonton.ca/smoking](http://edmonton.ca/smoking)

## Recreation Network Meetings - Monday Dec 10, 2018.

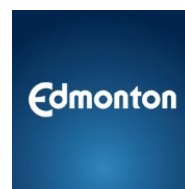
Neighbourhood Recreation Networks are City-sponsored gatherings that come together three times a year to enable local recreation providers to enrich their capacity and to better serve local community members in their neighbourhoods. Join in with other community recreation providers in your Network to discuss local programming & events, share information and make new connections!

**Recreation Network #6** - Mon Dec 10, 6:30-8:30 pm @ Alfred H. Savage Centre. Invitations & agenda coming shortly (pls RSVP, light dinner included). Contact Kate Russell to add your organization to our Rec Network Email list!

### Edmonton Smart Cities Challenge: What makes you feel connected?

The Edmonton Smart Cities Challenge Team needs your input to inform our final proposal as we work towards winning \$50 million as part of Infrastructure Canada's Smart Cities Challenge.

Learn more about Edmonton's approach to improving the health and wellbeing of residents and share your thoughts at [smartcities.edmonton.ca](http://smartcities.edmonton.ca)



Kate Russell

Neighbourhood Resource  
Coordinator  
Neighbourhoods Services  
Section

More activities at the Belgravia School! Catch up with our school news for the month of November.



Grade 6 students, Ian and Parsa, demonstrate Bernoulli's principle in fluid dynamics during October's student assembly. The monthly assemblies are a great way to showcase student learning and achievements.



Martial Arts - Students participate in a taekwondo class over the lunch recess. The program is hosted by Impact Martial Arts. It is optional for grades 1 - 3 students.



Grade 4 student, Mathew, dropping off Halloween candy collected by Belgravia students and resulted in a \$206 donation to the food bank.



Above: Grade 2 class' "Signs of Fall" artwork on display in the front entrance.

Below: Teachers and school staff celebrated Halloween with Harry Potter themed costumes.





Grade 3 students dressed up for the school's Halloween parade



## Nathan's Piano Studio



*\*Dynamic Piano Lessons – For the Rest of Us\**

Engaging Tangible Activities  
Refreshing **Personalized** Direction  
Valuable Skill **Development**

Come Join the Music-Making Today!

7-Year Professional, B.Mus. (Classical Piano), B.Sc. (Civil Engineering)

**780.999.9691**

nathan.eisentraut@gmail.com

Located in Belgravia

### Nicely Furnished Belgravia Home for Rent

3 bedrooms (2 rooms with beds) / 2.5 washrooms

Short-Term or Long-Term Availability

5 Minute Walk to LRT

Perfect for Professionals - Just Move In

Contact Adam at [adamk21@hotmail.com](mailto:adamk21@hotmail.com) for further details

# WE HAVE MOVED

80 Ave NW

104 St NW
79 Ave NW

78 Ave NW
76 Ave NW

**10375 - 78 Ave NW-**

**10375 - 78 AVE NW, EDMO**

**• NEXT TO SAVE ON FOODS ON GATEWAY**

**HOURS OF OPERATION**

SATURDAY  
9:00am to 5:00pm

MONDAY  
8:30am to 12:00pm

SUNDAY  
12:00pm to 5:00pm

[WWW.STRATHCONAREGISTRY.COM](http://WWW.STRATHCONAREGISTRY.COM)

[INFO@STRATHCONAREGISTRY.COM](mailto:INFO@STRATHCONAREGISTRY.COM)

[/STRATHCONAREGISTRY](https://www.facebook.com/STRATHCONAREGISTRY)

(780) 430-1154

*Alberta* Author  
Regist.

## Yoga and Karate Classes



- Adult Classes
- Children's Classes
- Certified instructors
- Three Edmonton Neighbourhoods

[www.ThreeBattles.com](http://www.ThreeBattles.com)



## House for rent in Belgravia

**7131 Saskatchewan Dr.**

- Home has 5 bedrooms, 2 baths, finished basement, kitchen.
- Renovated in 2011.
- Outdoor parking front and back.

Smoking or use of cannabis not allowed

**\$2100** per month.

Phone 780-436-0141.

## St. Paul's United Church

11526 76 Avenue NW

[www.stpaulsunited.org](http://www.stpaulsunited.org)

**Thursday December 20**

7:30 pm Solstice worship

**Sunday December 23**

10 am family pageant

**Christmas Eve**

**Monday December 24**

4 pm focus on young children

8 pm candlelit worship

We would love to have you join us!

## Books and Budgets

(by Ben Henderson)

I am happy to share some good news with everyone. The eagerly anticipated new Capilano Branch of Edmonton Public Library is finally open. The Grand Opening is planned for November 23 at 10:30 am and I look forward to seeing you in our new, beautiful, and accessible building at 9915-67 Street.

## PIANO – THEORY – ADVANCED THEORIES – VOCAL COACH

All Ages, all levels. Classical/pop

B.Mus and ARCT in Piano Performance; ARMTA  
Member

Piano examiner and adjudicator;

Instrumental and vocal accompaniment for exams,  
auditions, recitals, competitions, recording

Music for weddings, funerals,  
private functions

[lindasteinbring3@gmail.com](mailto:lindasteinbring3@gmail.com); 780-435-4657

In budget news for Ward 8, both the Rollie Miles Athletic Field District Park Renewal and the 101 Avenue Streetscape projects are in the proposed Capital Budget. These projects are currently unfunded and will be part of the dialog during Council budget deliberations. I hope to get support for the next phase of the Rollie Miles Leisure Centre and Park: concept planning and design. That way it could be considered for construction in the next Capital Budget cycle.

My intention is to push for funding to keep the planning and design work going on the 101 Avenue project so it is ready for when the rebuild of the roadway can begin. The community has worked very hard on this and I do not want to see it lose momentum.

Including a shared-use path from Gateway Boulevard to 107 Street, along the rail line the Street Car uses, in the proposed South Side Bike Grid would help advance work on this long awaited route.

Folks who use the Strathcona 55 Plus Seniors Facility know the building has space and accessibility limitations for its users. I am determined to keep the conversation alive on planning for a new facility.

City Council will start weighing priorities on November 28 at 9:30 am in Council Chambers. Members of the public are welcome to attend or you could watch the proceedings through the Council On The Web live streaming service. Please feel free to contact me anytime at [ben.henderson@edmonton.ca](mailto:ben.henderson@edmonton.ca) or at 780-496-8146. Follow me on Twitter@ben\_hen



A.L.L. STARS REALTY LTD.

312 Saddleback Road  
Edmonton, AB T6J 4R7

Cell: 780-995-7556

[kristingardner307@gmail.com](mailto:kristingardner307@gmail.com)

Office: 780-434-4700

Fax: 780-436-9902

Independently Owned and Operated. ©/™ trademarks owned by Century 21 Real Estate LLC used under license or authorized sub-license. © 2017 Century 21 Canada Limited Partnership

**Kristin Gardner**  
REALTOR®



GRAND CENTURY  
OFFICE  
1999-2017