



In this issue:

President's Message - p2
 New Solar Panels and Solarbration - p5
 School & Playschool petting zoo - p5
 DC2 Development Proposal - p7
 Bus Service Changes - p9
 Made in Belgravia - p9
 Meet Your Neighbour - p10

Belgravia Community Hall

11540 73 Avenue
 Edmonton AB T6G 0G1

BCL is a member of the Edmonton
 Federation of Community Leagues
 (www.efcl.org)

Visit us online at belgraviaedmonton.ca,
 follow us on Twitter @BelgraviaYEG, like us
 on Facebook at BelgraviaEdmonton

To advertise in the belgravian contact
adsmanager@belgraviaedmonton.ca

Please remember to recycle this newsletter.

Next Submission Deadline

August 18 , 2017

Banner Picture - Under construction

Belgravia Community League Annual General Meeting

The Community League Annual General meeting
 was held on June 14, in the Upper BCL Hall.
 Changes to the board and committee chairs can
 be found on Page 2.



Belgravia School student Owen Biel
 enjoying the playground.

2017/2018 BCL Board & Related Committee Chairs

Past President	Kevin Klein	pastpresident@belgraviaedmonton.ca
President	Michael Cohen	president@belgraviaedmonton.ca
Vice President	Heather Scherer	vicepresident@belgraviaedmonton.ca
Secretary	Joanne Wynn	secretary@belgraviaedmonton.ca
Treasurer	Barry Edgar	treasurer@belgraviaedmonton.ca
Memberships	Jennifer Lambert	membership@belgraviaedmonton.ca
Facilities	Marcel Hucalak	facilities@belgraviaedmonton.ca
1. Hall Rental Coordinator	Jeanette Boman	hallrental@belgraviaedmonton.ca
2. Hall Renewal Chair	Kevin Taft	kevin.taft@shaw.ca
3. Rink Manager	Jim Sawada	rinkmanager@belgraviaedmonton.ca
4. Arts Park Team Leader	Kathy Goble	facilities@belgraviaedmonton.ca
Programs		programs@belgraviaedmonton.ca
1. Belgravia Playschool Chairs/Teacher	Irene Anderson & Ashley Lada/ Monika Fouad	playschool@belgraviaedmonton.ca
2. Made in Belgravia	Jeanette Boman	pastpresident@belgraviaedmonton.ca
3. Pumpkin Party, BCL BBQ, Casino	Reg & Jane Norby	norby@shaw.ca
4. Belmac Soccer Coordinator	Linda Cameron	llcameron2002@yahoo.com
Communications	Tonya Yonge	communications@belgraviaedmonton.ca
1. Belgravian Editor	Gail Fraser-Steffler	editor@belgraviaedmonton.ca
2. Ads Manager	Phyllis Schneider	adsmanager@belgraviaedmonton.ca
3. Distribution Team Leader	Susanne Rowe	
4. BCP We Page Management	Tim Janzen	playschool@belgraviaedmonton.ca
Planning & Place	Susan Kamp	planning@belgraviaedmonton.ca
1. Transportation Committee	Michael Cohen	transportation@belgraviaedmonton.ca
Community Safety		
1. End of the World Committee	Roger Laing	edmontoneotw@gmail.com
2. Belgravia Watch	Richard Law	belgraviawatch@gmail.com
Community Connections		
1. City Recreation Coordinator	Kate Russell	kate.russell@edmonton.ca
2. Belgravia Elementary Sch. Liaison	Michael Cohen	
3. UofA Community Consultation		info@belgraviaedmonton.ca



Tilman Reimnitz
Golden Tree Traditional Arborist Ltd
professional
tree work

tilman.wr@gmail.com
goldentreearborist.com
780 221-1712



Glass Monkey
GASTROPUB

5 minutes from Belgravia!

5842-111 Street 780.760.2228
www.theglassmonkey.ca

KW Landscaping & Snow Removal



- Neighbourhood Landscaper
- Yard Work & Snow Removal
- Reasonably Priced
- No Job Too Small

Phone: (780) 691-2011

Email: kwittenberg@timberframes.ca

Advertise in the Belgravian

1/2 page

1/4 page

card size

7.5"w x 5"h
19 cm w x 12.7 cm h

3.75"w x 5"h
9.5 cm w x 12.7 cm h

3.75"w x 2.5
9.5 cm w x 6.4 cm h

BCL Member \$75
Non-Member \$100

BCL Member \$50
Non-Member \$75

BCL Member \$25
Non-Member \$50

Email inquiries to Phyllis at:

adsmanager@belgraviaedmonton.ca

10% discount from multiple ads paid in advance

Ads to be in PDF, JPG, TIF or EPS formats in specified dimensions

President's Message

Hello everyone,

Thank you for taking a few moments to read my first monthly letter as the new BCL president. My wife Susan and I moved to Belgravia thirteen years ago, shortly after our first child was born. This is the neighbourhood that our two kids will always think of as the place they grew up, so Belgravia and Belgravia School are very special to our family. We have enjoyed many community league events and made many friends through volunteering with the league, playschool, and school. It's for these reasons that I was happy to help out when the league was looking for a new president.

Our community league directors and coordinators have been very busy over the past few years and have made great progress on numerous projects. My sincere thanks to those who left their positions in June and those who are staying on. Much of our work over the coming years will be a continuation of their efforts: Our new hall is finished, but we are still paying off loans from community members and learning how to best manage the facility. The City has completed a detailed study of the End of the World and proposed a redevelopment of the site, but nothing has yet been finalized. Several new higher-density developments have been completed or approved, but we are continually being asked to comment on new proposals. The City has tested several traffic management tools in Belgravia, but the backups on 76 Ave continue and much more needs to be done. The board will continue to keep residents informed and seek your input via The Belgravian, emails, and our website.

I am fortunate to tour much of the neighbourhood on a regular basis as I get pulled through the streets by Hazel, our family canine. If you see a guy and dog out there and the dog looks like she's part coyote and the guy looks like he's part Greg Heffley, that'll be us and feel free to stop and chat about what's on your mind. Or please email me anytime at president@belgraviaedmonton.ca

Michael Cohen

HEY BELGRAVIA!

Age is just a number, but attitude is everything.

Let your 4- to 6-year-old let loose at the dance 'n' play party for lil' feet.

The only rule? They gotta come ready to rock out!

HOW IT WORKS

Zumba® Kids Jr classes are rockin', high-energy dance parties packed with kid-friendly routines. We break down steps, add games, activities and cultural exploration elements into the class structure.

BENEFITS

Helps develop a healthy lifestyle and incorporate fitness as a natural part of children's lives. Classes incorporate key childhood development elements such as leadership, respect, team work, confidence, self-esteem, memory, creativity, coordination, balance and cultural awareness.

WHEN
THURSDAYS
6-6:45PM
Sept 14 - Oct 19
10 spots
6 weeks - \$58

REGISTER
Contact
programs@belgraviaedmonton.ca

QUESTIONS
Contact Allison
moore4movement@gmail.com



**little feet
lots of soul**



**STARTS
SEPTEMBER 14**

PosterMyWall.com

FREE DROP-IN

Edmonton

POP UP PLAY PROGRAM

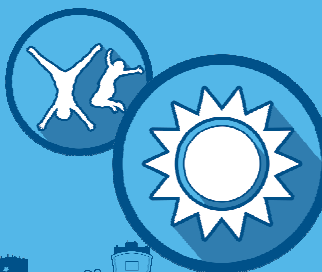


LOCATION	DATES	DAYS	TIMES
Belgravia 11540 73 Avenue NW	July 4 – August 24	Tuesday & Thursday	10:00 AM—1:30 PM

Our Pop Up Play program is now running in neighborhoods all over Edmonton. Come and join us for games, crafts, sports, outdoor cooking and more!

This program is targeted for children aged 6-12, but all children accompanied by an adult are welcome to attend.

For more information, please visit:
edmonton.ca/dropincommunityprograms
or call 311. @GreenShack



Belgravia Cooperative Playschool is now accepting registrations for three and four year olds for the 2017-18 school year.

Located in the newly renovated Belgravia Hall, the not-for-profit preschool program has been serving the area for more than 40 years.

Registration forms available at:
www.belgraviaedmonton.ca
or by contacting:

playschool@belgraviaedmonton.ca.

MASSAGE THERAPY: *Pain Relief is in sight...*

Individually Designed Treatment Plans

- Deep Tissue & Accupoint Massage
- Therapeutic Exercise • Myofascial Release
- Tension • Stress • Prevention • Relaxation • Back & Neck Pains
- Flexibility • Pain Relief • Whiplash Injuries • Frozen Shoulder
- Migraines • Headaches • Obesity Issues • Arthritis • Accident
- Poor Posture • Complex Regional Pain Syndrome • Exercises
- Strengthening • Fibromyalgia • Lewy Body Dementia
- Balance Nerve & Muscle Tension • Sciatica

FOOT CARE: *Corns • Callus • Heel Cracks* *Thickened Deformed Discolored NAILS* **LASER for Fungus Free Feet**

Trained in Germany, **Maria Krieg** works wonders on aching backs as well as on needy feet.

People of ALL ages & lifestyles benefit from Massage Therapy.



BACK MASSAGE THERAPY & BASICS FOOT CARE

CARE FROM HEAD TO TOE SINCE 1981

There is no substitute for experience.



You deserve Good Health and Beauty too.

Call for your free Assessment
& Belgravia Benefits.

Maria Krieg, RMT • 11610 - 75th Ave, Edmonton • www.backbasics.ca • Phone: 780 - 436-8059

Celebrating new hall solar panels & BCL volunteers

The sun couldn't have been shining any brighter on June 25 when the ribbons were pulled away from the new solar panels on the BCL hall. With Great Canadian Solar on site to show how much electricity the panels were already producing, it was exciting to see the hall doing it's part of the environment.



And the 85+ BCL volunteers who turned up for strawberry, rhubarb, pineapple and/or chocolate syrup sundaes couldn't have been more appreciated either. With lots of ice cream and toppings, there were seconds (and thirds!) for everyone. BCL Secretary, Joanne Wynn managed the door prize entries and had a little time to eat her own sundae with husband Rob and daughter, Bella.

Petting Zoo at the School

Over the years Belgravia Play School teacher, Monika Fouad has promoted the petting zoo as a way for children to connect with animals. While starting as part of the play school program, the petting zoo slowly grew over the years to involve seniors and the larger community as well as more and more classes from Belgravia Elementary School.

No matter what your age, it's hard not to smile at the miniature horses, chickens, ducks, rabbits, goats and 'kids' that are all part of Chicken John's Petting Zoo. And seeing how eager the children are to enter the zoo and hold or pet an animal is even better. Thanks to this realization, we appreciate the Belgravia Parent Council for sponsoring the petting zoo this year.



Free & Drop-In

yeg youth

City Wide Free Events

July 6 11 am - 4 pm	YEGyouth World Cup 6 vs. 6 Soccer Tournament Commonwealth Stadium
July 11 1 - 5 pm	Arts Jam Improv, slam poets, talent shows ATB Arts Barn
July 18 5 - 9 pm	Pool Party Bash Pool! Music! Games! Queen Elizabeth Pool
July 20 1 - 6 pm	Youth Music Fest Outdoor Concerts Hawrelak Park
August 1 4 - 7 pm	Youth Art Show Local Art Show Latitude 53
August 3 1 - 6 pm	McDavid Cup 4 vs. 4 Hockey Tournament Churchill Square
August 8 1 - 6 pm	Movie in the Park Outdoor Movie and Activities Borden Park
August 10 2 - 6 pm	Lord of the Parks Skate Showcase and Competition Boyle Street Plaza
August 15 12 - 5 pm	YEG City Challenge City-wide race Shaw Conference Centre
August 17 1 - 6 pm	Hoops on the Square 3 vs. 3 Basketball Tournament Churchill Square

Youth Engagement & Neighbourhood Events

Want to run a fun youth event in your neighbourhood?
Through recreation, we aim to grow the sense of community amongst youth in Edmonton.
Come hang out and learn leadership skills through recreation!
Follow us on Facebook and find out when we will be in your

Rising Youth

Rising Youth provides free summer drop-in sites citywide for youth ages 13 - 17! Explore our free weekly outings to different locations around Edmonton with the youth leaders.
Locations for July & August 2017:

Abbottsfeld Recreation Centre (3006 119 Avenue) Tuesdays: 12:30 - 8 pm	Africa Centre (6670 129 Avenue) Mondays: 3 - 8 pm
Mill Woods 7207 - 28 Avenue, Wednesdays: 12:30 - 8 pm (12515 116 Ave NW)	

124 Street Youth Program

(12515 116 Ave NW)
Mondays: 3 - 8 pm and Tuesday-Friday: 12:30 - 8 pm
This youth-driven program provides a positive skill building environment through recreation, arts and sports.

Follow Us @YEGyouth

To register, or for more info visit:
edmonton.ca/youth or
youth@edmonton.ca

PIANO LESSONS

Js Piano

ACCEPTING NEW STUDENTS

2017 & 2018

Julie Sackey Forbes
BMus, BEd, ARCT, RMT
Piano Teacher and Accompanist

Call: 587.409.2249
jsfpiano@gmail.com

11011 65 Ave Edmonton, AB
www.jsfpiano.com

STARTS SEPT. 14

BELGRAVIA COMMUNITY HALL

11540 73 AVENUE

THURSDAYS * 7-8PM

10 WEEKS * SEPT. 14 - NOV. 16

MEMBERS * \$80 / \$15 DROP-IN

NON-MEMBERS * \$100 / \$20 DROP-IN

REGISTER AT PROGRAMS@BELGRAVIAEDMONTON.CA

QUESTIONS? EMAIL ALLISON AT MOORE4MOVEMENT@GMAIL.COM

PosterMyWall.com

DC2 Development Proposal on 76 Ave and 115 St: Update

Niche Development Corp. from Calgary and Fleming Development, an Edmonton company have proposed a development which involves taking down the three apartment buildings at the SW corner of 76 Ave and 115 St. Currently the 3 lots are zoned for medium density (RA7) and consist of 18 units, 6 in each apartment. The Grand Scala across the street is built to the specifications of the RA7 medium density zone that allows for a four story building with 32 units. Grand Scala has 51 units on 4 lots with a 6.6 meter setback at the front. For more information of what the current zone allows see: [http://webdocs.edmonton.ca/zoningbylaw/ZoningBylaw/Part2/Residential/210_\(RA7\)_Low_Rise_Apartment_Zone.htm](http://webdocs.edmonton.ca/zoningbylaw/ZoningBylaw/Part2/Residential/210_(RA7)_Low_Rise_Apartment_Zone.htm)

The Niche/Fleming proposal to build a 4 story condominium with 71 units has a greater density than that allowed under RA7, so requires a rezoning to a DC2 zone. The DC2 zone is specific to each site as it is the result of discussions between the developer, the community and the city. The DC2 process is for the developer to make a proposal, discuss it with the community and City and have the community provide initial feedback. In this case, BCL members were notified by an E-blast of a meeting with the developers on May 24, 2017. Further to this meeting, all BCL members who have provided e-mail addresses to the BCL were asked to respond to the proposal. Information about the proposal was also posted on the BCL website (belgraviaedmonton.ca)

Of the proposed 71 units , 14 will have two or more bedrooms to a maximum size of 1,100 square feet. Underground parking is planned with one parking space per unit. The building will be set back at the front 6.6 meters. The building will have geothermal heating and will be built with concrete and steel.



While there is support for increased density and infill in general, a variety concerns have been identified e.g. traffic, whether size of units are family friendly, on street parking, visitor parking, impact on 76 Ave boulevard trees to mention a few.

We are now about to enter into the next phase of the DC2 application. During this phase you have another opportunity to convey any concerns or applause that you have directly to the City. Even if you have already sent feedback to the developer, it must be sent directly to the City Development Officer: fiona.hamilton@edmonton.ca. in this phase of the DC2 process.

We have not as yet been informed of the dates for this next phase (start and finish dates) so watch for an e-blast!

For more information you can contact your BCL Planning Director, Susan Kamp:
planning@belgraviaedmonton.ca

Simply Supper Belgravia Cooperative Playschool Fundraiser

You can purchase a card for \$100 each which buys about 8 meals. You and some friends can then go and put together your meals. Judging by the happy faces below it looks like a fun time. Contact play.school@belgraviaedmonotn.ca to purchase your card.



The annual kindergarten ducks. Kindergarten children, Ella Katz, Samuel McFadyen, Zayne Abdalkader, Aaron Cheng and Celeste Zillio with the kindergarten ducks. Each child also has the opportunity to take them home overnight.



Fellow Belgravians, Visionaries, and Adventurers

If you are an experienced engineer, a start-up wizard, or an angel read on.

Informed people have no doubt we are radically changing our planet. Governments are pressing for solutions. Two and a half year's work, a NRC patent search, and preliminary engineering reviews tell me SunDraco Power Inc. may have found a good one. It is the Dispersed Electric Power Plant (DEPP), a small, efficient, environment-friendly power plant that integrates heat from wasted resources. One model burns natural gas at the wellhead, and reinjects *all* emissions. DEPPs may have global significance.

I have start-up experience, a well-thought out business plan, designs, production numbers, an in-house market analysis, and critical contacts who will be helping us with R&D, patent protection, and government programmes. I value passion, vision, creativity, innovation, integrity, the environment, and good science. I need to complete our team and get going.

If you are serious, email R at R.SDPI@shaw.ca

Made in Belgravia: Honey in Your Backyard

Have you ever wondered about having a backyard beehive and collecting your own delicious honey? Find out what's involved in becoming an urban beekeeper at our next Made in Belgravia session with Kerry Maguire and Rob Wynn. While Rob is relatively new at beekeeping, many of you will know Kerry for the honey she has produced in Belgravia for several years now. Sample a little honey and sip some mint tea while we learn.

When? August 23, 2017 (2-4 pm)

Where? Upper BCL Hall

Session Fee: \$5/BCL members; \$10/non-community league members

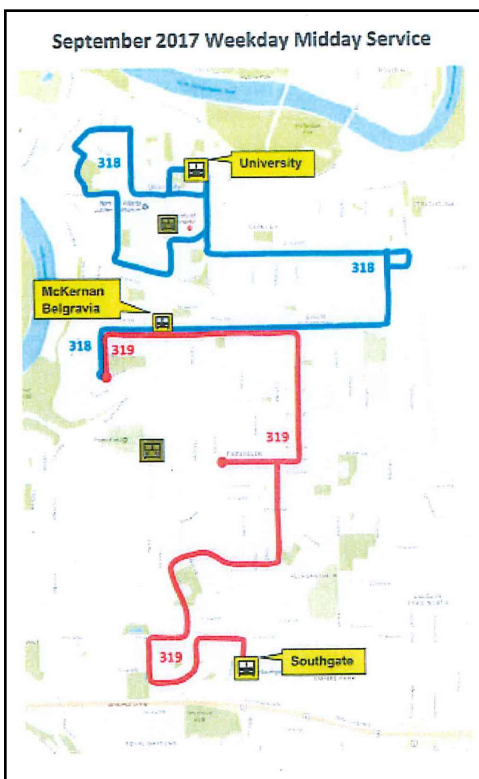
RSVP by August 21 to: mib@belgraviaedmonton.ca



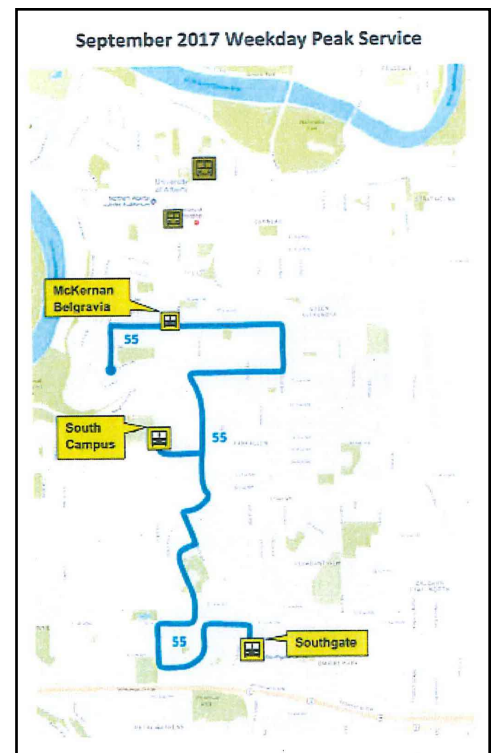
Bus Service Changes in Belgravia

Edmonton Transit has made changes in the bus service to Belgravia. The existing route 327 that comes into Belgravia will be discontinued. New routes, that serve other neighbourhoods as well, will come into our community. The following is a description and maps of the new routes that will start on September 5, 2017.

Route 55 that serves the neighbourhoods of Malmo and Lendrum, will be extend to McKernan and Belgravia. Service will operate every 30 to 60 minutes between Belgravia and Southgate Transit Centre. The extension of Route 55 will replace the current service on Route 327, which will be cancelled.



Service during weekday midday and Saturday midday time periods will be provided by the new Routes 318 and 319 operating every 60 minutes. These routes will provide service in the following neighbourhoods: Malmo, Lendrum, Pleasantview, Allendale, Parkallen, Queen Alexandria, McKernan, Belgravia, Strathcona, Garneau, University and Windsor Park. This new service will replace the current service on Routes 313 and 327.



The letter from Edmonton Transit and maps of the old and new routes are posted on the Belgravia Community website belgraviaedmonton.ca.

Meet Your Neighbour: Vera Chornoluk

Nearly 90 years old (on September 10), Vera remembers the wheat fields that grew south of 73 Avenue and riding the Toonerville Trolley downtown to go shopping. It is hard to imagine being a witness to all the changes that have occurred since Vera moved to Belgravia in 1956 with her husband, Metro. Trained as an 'Electrical Neurophysiology Technologist', she worked at the University Hospital until 1965. She continued her career as an EEG Technologist at the Royal Alex Hospital until her retirement in 1993.

During those years, Vera honed her golfing skills at the Highlands Golf course (with two holes-in-one and even golfing with Betty Cole to her credit). Her other joy was travelling the world: walking the Great Wall of China, climbing Mount Kinanbalu in Malaysia, covering all of South America and exploring most of Australia and New Zealand.

Her active lifestyle continued after retirement when she joined the U of Agers and pursued gymnastics for several more years. In 1999, she travelled with the group to Orlando and performed in the Year of the Senior festivities. After all these years, she can still do the splits and be an inspiration to all in the Stretch and Strength classes at the BCL Hall this past year.

Metro died in April 2016 leaving Vera on her own after 71 years of marriage. She is resilient with her strength of faith and connection to her community. When she isn't chatting with her neighbours over the back fence or gardening or watching golf on TV, you'll find her talking with her sisters in Edmonton & Kelowna by telephone, checking out Facebook messages and texting with her iPad.

Vera is a role model for managing all the changes in life. Her secret she says is staying active. So come out and join her this fall in the Fit for Life classes at the BCL hall. Maybe she'll teach us all how to do the splits!

