

# Meet your neighbour: Pat Galbraith



Belgravia is not only home to an eclectic arts park, it's also home to a number of Edmonton's renowned artists. Pat Galbraith has lived in Belgravia since 1967 — almost half a century! Her house on 72 Avenue is easy to spot, with a boulder-sized, concrete sculpture resting in her front yard. Named Alpha and based on the letter "A," the sculpture that greets neighbours is one of Pat's earliest works.

"Years ago, I thought of sculpture as the most honest form of art. There is no room for deception when you can view a work from every possible angle. I've since grown to understand that truth takes many forms," she says.

Pat has been honing her skills with many materials for over 30 years. As a sculptor, Pat's favourite media are marble and bronze. As a painter, watercolour is her medium of choice.

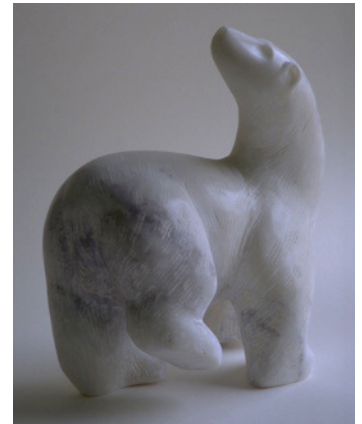
A respected adjudicator of international ice and snow competitions for more than 20 years, Pat is known for being observant and fair. She has judged competitions all over Canada, including Edmonton's Ice on Whyte Festival, and as far away as Japan.

"The transparency of ice challenges the sculptor to consider layers of perception and to use the reflection and refraction of light. In its visual purity, ice celebrates the act of creation," she says.

Pat's fascination with design and shape is also evident in her Belgravia home, which she planned with her beloved late-husband, Bernie. Her bright, accessible, energy-efficient house sits on the site of their former 1950s semi-bungalow.

"The kitchen island was inspired by an ice reception counter, which I saw in Ottawa during *Winterlude*," she says. "Occasionally you get the opportunity to stretch your abilities. For me, it was being able to design some aspects of my home."

Next time you're at the arts park, head south to 72 Ave. and 115 St. to check out Alpha and a few of Pat's other works displayed outside her gorgeous home.



## 10 Questions with Pat Galbraith

### 1) What do you like best about Belgravia?

The residents

### 2) What's your favourite Edmonton restaurant?

Continental Treat on Whyte Avenue

### 3) What's your favourite vacation spot?

To learn, Turkey. To relax, the Yucatan.

### 4) What's the one item you can't live without?

Imagination

### 5) What's your biggest pet peeve?

Dishonesty

### 6) What's your guilty snack-food pleasure?

I never feel guilty about snack foods — I just enjoy them.

### 7) Who would you most like to be stuck in an elevator with?

Bernie Galbraith (my late husband) and the Dali Lama. The conversation would be amazing!

### 8) What super power would you love to have?

I'd love to fly or teleport

### 9) What would your personal theme song be?

What a Wonderful World, sung by Louis Armstrong

### 10) What are your words to live by?

"What if..."