

Belgravia Dogs Off Leash Site

Change to boundary effective March 1, 2014

In 2013 a new Dogs Off Leash Boundary was established at the southeast part of the area.

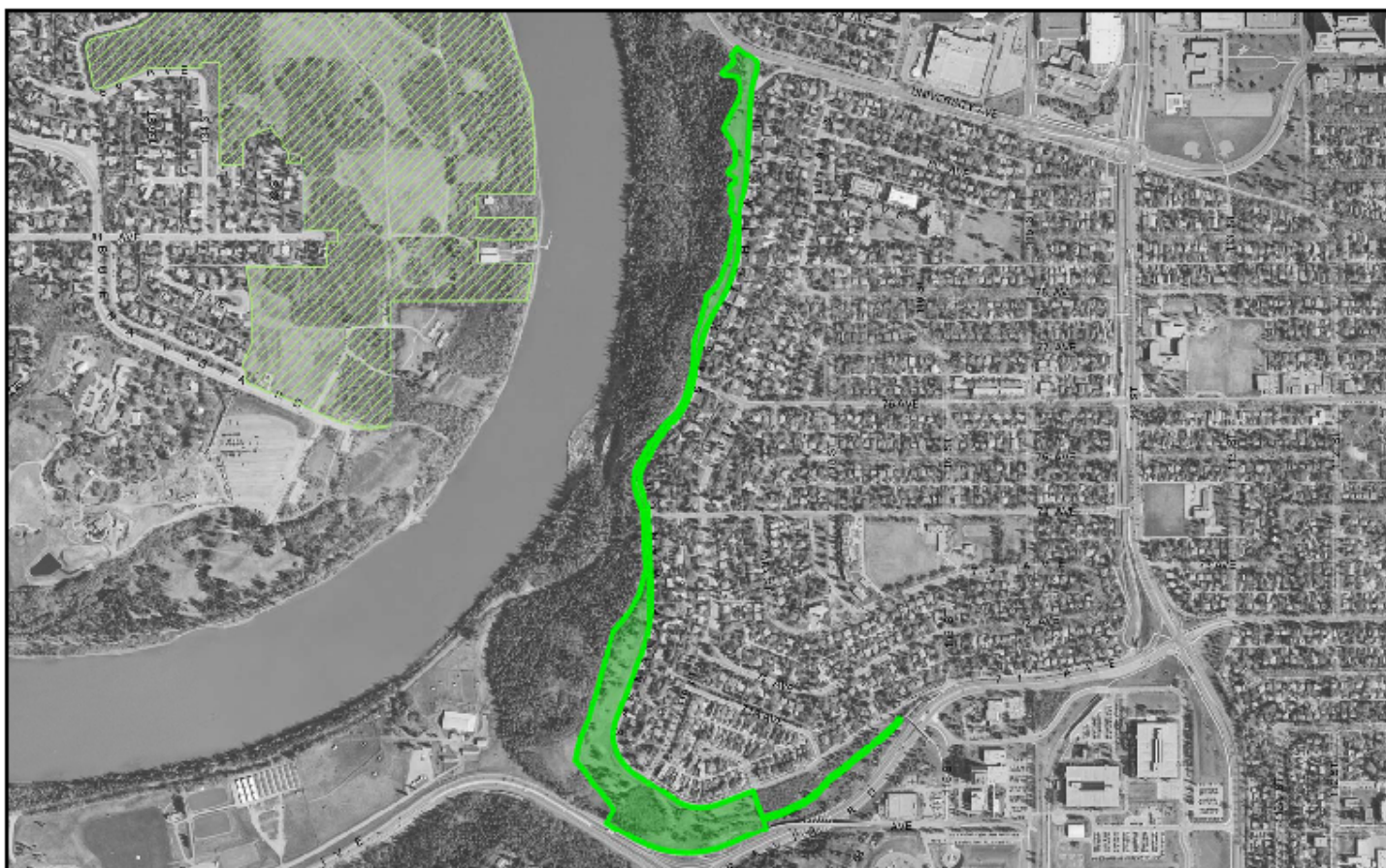
Later in 2013, a group of dog walkers expressed a desire to extend the boundary to include the lower trail to the footbridge. The City process requires that adjacent Community Leagues are advised and that a minimum of 66% of adjacent residents are supportive. Following the established process, the group received the support of the Belgravia Community League to undertake a survey of adjacent residents.

- This survey received over 70% support of adjacent residents for the addition of the lower trail.
- In addition, a notice was placed in the Belgravia and McKernan community league newsletters and the City received over 80% support for the proposed changes.



Permanent signage will be installed in the spring. The City website has been updated with a map and the following description.

Saskatchewan Drive top of bank from University Avenue south to the west side of a tree stand across from the intersection at 202 Saskatchewan Drive South and the lower trail to the footbridge.

If you have any questions, please contact 311. For further information regarding Off Leash sites visit: http://www.edmonton.ca/attractions_recreation/parks_rivervalley/off-leash-sites.aspx



#20 - BELGRAVIA

-  Belgravia Off-Leash Area
-  Adjacent Off-Leash Areas

Saskatchewan Drive top of bank from University Avenue south to the west side of a tree stand across from the intersection at 202 Saskatchewan Drive South and the lower trail to the footbridge.

PARKS HEALTHY, by nature

Edmonton

