



the belgravian

nov/dec 2014

Contents:

Editor's note - Cover and p2
Community Hall Fundraising - p3
Incoming Editor Note - p4
Planning & Development - p5
Belgravia Holiday Marketplace - p9
Municipal Enforcement Officer - p7
President's Update - p8
Councillor Ben Henderson - p9
Belgravian Feedback Survey - p11

Belgravia Community Hall:
11540—73 Avenue

Between issues, and for links to other resources discussed herein, visit:

www.belgraviaedmonton.ca

Facebook:
[facebook.com/belgraviaedmonton](https://www.facebook.com/belgraviaedmonton)

BCL is a member of the Edmonton Federation of Community Leagues - learn more at: www.efcl.org

Printed on recycled paper. Please remember to recycle this newsletter.

from the editor's desk...

I laid out this last issue of the *Belgravian* thinking, "Maybe I could just keep doing it!"

Then, I would stop myself and go look at my calendar to reactivate my resolve. There is just too much. Change is healthy.

We all have roles to play. I am a mom, wife, sister, daughter, teacher, friend, and volunteer. I'm not unique in this multi-rolled existence (we're all busy), but pile on the whole mayor bit and the precarious balance is a challenge to maintain. Our family is constantly defined by my husband's work and we are generally only recognizable in the greater public through his words and deeds.

This is one of the reasons the *Belgravian* has been so dear to me. As

a big fan of community (both as a member and builder), I've loved playing my own little part in bringing us together.

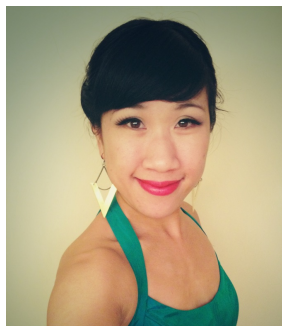
Funny story. This past summer I was walking on Jasper Ave on my way to dinner, when I passed two men on the street. Upon crossing paths, one of the men was looking at me intently, did a double-take, and then appeared to want to say something.

My inner monologue thought, "Time to deal with awkward cat calls" or "Not in the mood to discuss my husband's job with strangers".

Then the guy spoke up and exclaimed, "Hey! Are you the editor for the *Belgravian* newsletter?"

continued on page 2...

from the editor's desk... *cont'd...*



My scowl burst into a smile! I answered (probably with too much enthusiasm) “YES, THAT’S ME!”

What a treat to be recognized as Sarah Chan! For a volunteer job that I do for our community here in the University area.

How random, and fabulous to run into other Belgravians across the river. Furthermore, to actually be recognized as somebody without any mention of mayor Iveson.

It’s a small thing, but with much significance for me. Thanks, guys!

Speaking of our newsletter transition, I am excited to see what our incoming editor, Josie Hammond-Thrasher (page 4), has in store for us. We’ll be meeting early in the new year to process our transition and I am sure she will have great ideas regarding the *Belgravian*.

In lieu of said transition, Warren Mulvey (communications) has created a survey on page 11 for you to submit online. It will give us an idea about who is reading the *Belgravian* and what they enjoy.

You will find the hall renewal update on page 3; An introduction to our new planning and development BCL board member on page 5; Introduction to our new municipal enforcement officer on page 7; BCL president’s message on page 8; And, some thoughts from our city councillor on page 9.

Thank you again to all those who submit content for our little publication. And always, to our ads management and distribution group. It has been a pleasure to work with you and I’m going to miss being part of this team. If anybody out there wants to get in on the newsletter team, you can always send an inquiry to newsletter@belgraviaedmonton.ca and indicate how you might be available to help.

It’s been a slice, Belgravians.

À Beintôt!

Belgravia Community League Contacts

Past President	David Ridley	pastpresident@belgraviaedmonton.ca
President	Jeanette Boman	president@belgraviaedmonton.ca
Vice President	Kevin Klein	vicepresident@belgraviaedmonton.ca
Secretary	Sheila O'Brien	secretary@belgraviaedmonton.ca
Treasurer	Peter Hooper	treasurer@belgraviaedmonton.ca
Membership	Leigh-Ann Topfer	membership@belgraviaedmonton.ca
Programs	Debby Waldman	programs@belgraviaedmonton.ca
Director, Facilities	Ken Goble	facilities@belgraviaedmonton.ca
Director-at-large	Barb Krahn	barb.krahn@belgraviaedmonton.ca
Director-at-large	Dale Rowe	dale.rowe@belgraviaedmonton.ca
Hall Rental	Jennifer & Doug Klein	hallrental@belgraviaedmonton.ca
Arts Park, Chair	Toscha Turner	hallmaintenance@belgraviaedmonton.ca
Rink Manager	Jim Sawada	rinkmanager@belgravia.edmonton.ca
Communications	Warren Mulvey	mulveyw@live.com
Hall Renewal	Kevin Taft	kevin.taft@belgraviaedmonton.ca
Belgravia Watch	Richard Law	belgraviawatch@gmail.com
Newsletter Ads Manager	Vacant	newsletter@belgraviaedmonton.ca
Belgravia Community Plan Committee	Don Grimbale	dgrimbale@telusplanet.net
End of World Chair	Roger Laing	edmontoneotw@gmail.com

advertising in the belgravian

1/2 Page	1/4 Page	Card Size
10"w x 5"h	3.75"w x 5"h	2.25"w x 3.25"h
BCL Member: \$75	BCL Member: \$45	BCL Member: \$25
Non-Member: \$100	Non-Member: \$60	Non-Member: \$35

Submit inquiries to newsletter@belgraviaedmonton.ca

Discounts available for full-year commitment

Send ads in PDF format, saved in the specified dimensions

Hall Renewal Progress Report

Kevin Taft, Hall Renewal Chair

Two home runs, and a mighty swing for a third.

The time to hit home runs is autumn, World Series season. The Hall Renewal Project hit two home runs in October, and is swinging hard for a third. There is no doubt this is a championship neighborhood.

Our first home run was confirmation from our MLA, Steve Young, that the project is approved for a \$200,000 provincial grant. Thank you to Steve and the provincial government. This fills the last large gap in project financing; with the City's commitment and the community league's saving and fundraising the full \$1.15 million is within a breath. We are gearing up to begin construction next spring.

The second home run was obtaining a development permit from the City. This was a make-it-or-break-it step. It means City staff reviewed the project from every possible angle and are comfortable with it going ahead.

More permits will be needed in the future, but this is the fundamental one.

We've taken a mighty swing at a third home run: our neighborhood fundraising goal of \$250,000. As of October 27 we had passed \$240,000, which speaks loudly to the generous spirit of the people in Belgravia. There is no way this team is quitting now.

Help us hit this third home run. If you haven't made a contribution yet, don't put it off for another moment.

Please send a cheque to the Belgravia Community League, Box 52202, Edmonton, T6G 2T5. Or go to the community league's excellent website and follow the links to contribute with an electronic payment.

GO Belgravia GO! Let's knock it out of the park.

Big big cheers for everyone who has helped out. Thank-you, thank-you.

The Belgravia Hall Renewal Committee is Kathy Brodeur-Robb, Michael Cohen, Kathy Goble, Dale Rowe, Jonathan Sharek, Eugene Silva, and Kevin Taft (Chair).



Bike lanes. It's time to build.

The Edmonton Bike Coalition is calling on city council to dedicate 0.8% of the next capital budget to building bike lanes in our core neighborhoods.

Show your support - join the coalition.

yegbikecoalition.info

SWEATER SALE OPEN HOUSE

**Windsor Park Community
Hall**

11840 - 87 Ave.

Saturday, December 6, 2014

9:00 A.M. to 3:00 P.M.



**Hand - knit scarves, hats, vests,
sweaters...pima cotton/alpaca:
adult**

& children sizes (custom orders available)

PRICES: \$25.00 - \$250.00

Minkha is a women's knitting cooperative. **Save the Children Canada** volunteers assist the Bolivian knitters by marketing the sweaters on a non-profit basis.

Linda Haswell (780) 436-5732

www.minkhasweaters.com

Message From Your Incoming *Belgravian* Editor

Josie Hammond-Thrasher, 2015 Belgravian Editor

Hello, neighbours! It's my pleasure to introduce myself as incoming editor of the *Belgravian*, starting in January, 2015.

Heartfelt thanks go to Sarah Chan, who has given her time and talents to editing the *Belgravian* for the last four years — she's done a fabulous job in helping to connect our community! We understand the demands on her at this time in her life but maybe her community connecting skills might find their way into a column or two in future issues of the *Belgravian*!

With the holiday season fast approaching, the BCL Board has asked me to write an article about a topic that's dear to my heart and the hearts of many *Belgravians* — giving back at Christmastime. As the Communications Coordinator for the Christmas Bureau of Edmonton in my professional life, this will come as no surprise to those of you who already know me.

Whether you choose to volunteer your time, donate to your favourite charity or perform a random act of kindness for a neighbour, giving back is the perfect way to put the meaning of the season into practice.

Neighbours Helping Neighbours.

For most of us, sitting down to a holiday feast surrounded by family and friends is a tradition we take for granted. But, as the cost of living continues to rise, many people, especially the working poor, feel the squeeze. For them, a festive meal is simply out of reach.

Since 1940, the Christmas Bureau has worked to make sure Edmontonians in need get a festive meal at Christmastime. This year, the charity expects to provide food hampers or food gift cards for 65,000 Edmontonians in need.

Many Edmontonians turn to the Christmas Bureau for a few years of help during a difficult time. Some, particularly seniors and Edmonton's working poor, face a day-to-day battle to meet their needs on a fixed- or low-income. Some have suffered a medical crisis that has left them unable to work or they've lost their jobs. Some, particularly single parents, have returned to school to improve their family's circumstances. And some have moved to Canada for a better life, but struggle with the costs of settling in a new city.

"The people we help receive more than a meal; it's Christmas with hope, dignity and the knowledge that there is support from the community," says Wendy Batty, Christmas Bureau executive director. "We couldn't provide these festive meals without the help of our donors and volunteers — we truly are about neighbour helping neighbour during the festive season."

Each food hamper with a turkey and all the trimmings for a family of four costs \$100. To pay the bill for these festive meals, the Christmas Bureau must raise close to \$2 million — and do it in just six weeks!

There are several ways you can help the Christmas Bureau; to get involved:

- donate today at christmasbureau.ca/donate, by phone at 780-421-XMAS or at the McKernan Fire Station
- hold a fundraiser for the Christmas Bureau at your office, school, church or club
- sponsor a food hamper for a family, senior or individual in need

To learn more, visit christmasbureau.ca or call 780-421-XMAS.



Leslie McGlennon
Chef | Owner

7609, 115 Street
Edmonton, Alberta
780 756 3344
www.belhub.com

Contemporary Comfort Food
Beer & Wine

New BCL Director, Planning and Development

Dianne Gillespie, BCL Planning and Development

I am looking forward to getting involved in the planning and development issues in Belgravia. My position is in place to help the BCL address issues related to development permits, rezoning applications and transportation activities related to our current and future as a community. Building on the work of the Belgravia Community Planning Committee (BCPC) initiated in the fall of 2013, I would like to renew a vibrant and committed BCPC with new and existing members.

To date there have been several applications for rezoning and development in Belgravia so the time is ripe to regroup, strategize and decide how the BCPC will move forward. A strategy meeting for the BCPC will be held at the Belgravia Community Hall on November 5th from 7-9 pm. All are welcome to attend and bring ideas for how we can be a part of the way Belgravia grows and develops.

Welcome to Steve Schroeter who has stepped up as Chair, Transportation Committee. We have a small group who came together last April to address traffic problems throughout the community: speeding, rush hour cut through traffic, use of collateral road and alleyway systems to get to the 76 Avenue/115 Street four way stop to name a few. We depend on the volunteers who come out to help solve these problems. With Belgravia slated for the 2015-2018 round of the Neighbourhood Renewal Program, now is the time to get our ideas down on paper so we can work out solutions when the streets and sidewalks are renewed. If you are interested in helping out in this area, please contact Steve at transportation@belgraviaedmonton.ca

If you have any questions about the BCPC in particular or development matters in general please contact me at planning@belgraviaedmonton.ca



GREEN & GLOW

WINTERFEST

A SPECTACLE OF LIGHT, FIRE AND SNOW

January 29–31, 2015, U of A Main Campus

EVERYONE WELCOME.

Register at uab.ca/winterfest

UNIVERSITY OF ALBERTA
ALUMNI 100 YEARS

Belgravia Holiday Marketplace

November 26, 2014

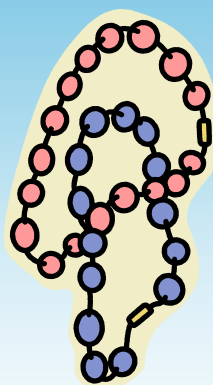
7-9 p.m.

Belgravia Community Hall

11540-73 Avenue



This month's Made in Belgravia event will be a holiday gift market. Come and do some holiday shopping, talk with your neighbours, and share some spiced cider and cookies!



If you would like to participate as a seller, please contact Phyllis at ennilady@gmail.com.

Municipal Enforcement Officer Update for Belgravia

Vadim Budman, Municipal Enforcement Officer

I'd like to introduce myself as the Bylaw Officer for your area. As the Municipal Enforcement Officer with the Community Standards Branch of the City of Edmonton's Community Services Department, our branch investigates and enforces a variety of bylaws that contribute to the livability of this city and your local community.

As well as enforcement, we also like to engage the community and offer opportunities to educate citizens of our services. This education can not only empower residents to understand what constitutes valid bylaw complaints, but can also educate people regarding what are the standards and expectations from the community to prevent them from becoming the subject of a bylaw complaint.

Outlined below are some of the more common complaint types we investigate. If you would like more information on the various complaint types and how I can help you, please call me at 780-496-5241 or e-mail me at Meo88@edmonton.ca

Community Standards Bylaw 14600

1. Untidy and Unsightly properties (Nuisance on Land) -means land that shows signs of a serious disregard for general maintenance and upkeep. Or excessive accumulation of materials or any loose litter, garbage or refuse located anywhere on the land or public property adjacent to private land.Examples include:

- a. Messy garbage storage locations
- b. Appliances, furniture and excessive accumulation of debris on the property
- c. Damaged, dismantled or derelict vehicles or motor, insured or registered or not;
- d. Smelly or messy compost heaps.
- e. Unkempt grass or weeds
- f. Production of excessive dust, dirt or smoke including offensive odours.

g. Trees, shrubs, vegetation or structures that interfere with public work or utility; that obstructs any sidewalk adjacent to the land; or that impairs the visibility required for safe traffic flow at any intersection adjacent to the land.

2. Snow on Sidewalk – Means clearing all sidewalks adjacent to land owned or occupied clear of all snow and ice. Please note: the 48hr rule is a courtesy that is extended by policy only. It is not a legislative provision. Officers have the discretion to act accordingly when aggravating or mitigating circumstances arise.

3. Unsightly Buildings (Nuisance on a Building) - means buildings showing signs of a serious disregard for general maintenance and upkeep. Examples include:

- a. Damage to the building.
- b. Any graffiti displayed on the building.
- c. Any rot or other deterioration within the building; and any inappropriate infiltration of air, moisture or water into the building due to peeling, unpainted or untreated surfaces, missing shingles or other roofing materials, broken or missing windows or doors, or any other hole or opening in the building.

Business Licence Bylaw 13138

1. Enforcement of unlicensed businesses and businesses which are licensed but not following their licensing conditions.

Waste Management Bylaw 13777

1. This bylaw regulates what kinds of items can be set out for collection, and the manner in which they are set out.

The purpose of this letter is to increase awareness of our bylaws and the services we provide. This is also a great opportunity for you to ask questions or alert me to any chronic offenders or serious issues in your neighbourhood. Individual complaints must still be filed through 311 so that they get assigned correctly and statistics are properly calculated. I look forward to working with you to help keep Edmonton a safe, clean, livable city.

BCL President's Update

Jeanette Boman, BCL President

I am one of those people who have kept a binder of the Belgravian newsletters delivered to our home over the years. It was always a little publication that I look forward to reading and something worthwhile to keep for future reference.

And I know I am not the only one who enjoys reading it. During our door-to-door BCL membership canvassing, the most common comment we hear is how much people like receiving the newsletter. It's not only about the information it brings to everyone, but also the way it helps connect us within the community.

I've gone back to the September, 2011 Belgravian when Sarah Chan introduced herself as the 'new girl behind our community's newspaper.' With her signature photograph banner across the front page and some

experimentation with content, layout and design, the Belgravian took on a new look under Sarah's editorial stewardship.

Over the years, Sarah's enthusiasm for Belgravia and all the things that happen here spills out through her words, making everything seem just a little more fun... even the long, dark, cold and snowy winters.

Through her editorials, we've learned a little bit about her growing family and busy life; her love of cycling (in heels no less!) and teaching piano; her appreciation of a neighbourhood like Belgravia and the people who live here; and more than anything, her commitment to all the work and activities of the Belgravia Community League. We could not have asked for a better, more enthusiastic supporter.

Thank you Sarah ... as you move on to new and other exciting challenges, we wish you all the very best!

Polish Culture Society of Edmonton / Polish Canadian Fall Festival 2014
presents:

tkp POLISH CULTURE SOCIETY

"Notturmo"
Classical Chamber Music Concert
"Notturmo" will inspire the audience to embrace the long winter nights through music of passion and soul

Mazurka Piano Quartet
Tatiana Warszynski- violin
Clayton Leung- viola
Alena Senko- cello
Yoana Kyurkchieva- piano

Saturday, November 22, 7 pm.
Muttart Hall, Alberta College Conservatory of Music,
10050 MacDonald Drive, Edmonton.

Tickets: \$20 adult, \$10 senior/student,
PCS members/children under 12-admission free.
Tix on the Square 780 420 1757, Camelot Travel 780 430 8747 or at the door,
The Gramophone 780 4282356

**Change is Happening
in Edmonton-Strathcona**

eleanor4strathcona.com

Eleanor Olszewski Q.C.
Your Liberal Candidate

Liberal.ca



Growing City Requires Changes in Representation



Ben Henderson, Ward 8 City Councillor

City statistics show Edmonton as the fastest growing city with a population now sitting at 877,926 with 30,000 new residents calling the City of Festivals home, every year. This massive growth brings complications to how the city

governs, and at times, it can be the justification to increase the number of elected officials.

While, it is important for elected officials to maintain contact with their constituents, I believe it is also desirable for municipal government to avoid the development of party politics and bloc voting, which all too often forms in larger governments. With examples of Toronto and Montreal, the complications that come with bloc voting can be crippling to the greater goal of serving the city, and its people. This is the trade-off.

Studies show the ideal number to most effectively govern is around 12-13 elected officials. As we get larger and larger, typically, the more likely bloc voting becomes, and the less efficient Council is. I am always awed when looking back on a year at the number of projects, initiatives, and work that we have been able to complete; something I believe is the envy of many other big cities.

On the other hand, as ward populations increase, it becomes extremely difficult to maintain personal contact with our constituents, get to all the community events, and be able to focus on all individual constituent needs. With some wards pushing 90,000, it is becoming unrealistic to expect to be able to continue to provide the same representation and service to such a large group.

What are our options? We can follow suit with other municipalities, most recently Calgary, and increase the number of Councillors. This would come at significant financial costs including a rework of Council Chambers, the Councillor's Wing, and a large increase in budget to fund the additional offices. Alternatively, we could look at increasing the number of support staff per office and improve the capacity deficit that way. While it would require some financial investment to fund these staff, it would be meagre in comparison to the first option. This would then mean that the public's interaction with Council will be even more through our staff as we cannot possibly be as involved in each constituent concern as we would like, while effectively govern.

I am undecided on the issue and see the benefit for both sides, as well as their limitations. Moving forward, I would like to hear from you as to what you think.

Feel free to call me at 780 496 8146, email me at ben.henderson@edmonton.ca, or follow me on Twitter @ben_hen.

Lendrum Pottery Group

Christmas Sale

**Saturday November 29, 2014 10:00 AM
- 2:00 PM**

11335 - 57 Ave., Edmonton, AB
(Entrance off 113A St.)

Pottery for all tastes at reasonable
prices.

Dishwasher, oven and freezer safe.
Free coffee

Cold Weather Safety



Alberta Health Services EMS responds to many cold weather related emergencies every winter. Simple actions, such as: dressing appropriately and anticipating sudden weather changes may help keep you warm and safe this season.

Frostnip

- Frostnip occurs when skin is extremely cold, but not frozen. It commonly affects the ears, nose, cheeks, fingers and toes;
- Skin appears red, but also turns white when pressed. It may also feel numb to the touch;
- When treated promptly, frost-nipped skin will heal without complication;
- Gently re-warming the affected area in a warm environment is advised.

Frostbite

- Frostbite occurs when skin becomes so cold, that the skin and underlying tissue freeze;
- It may look white and waxy and will feel hard to the touch;
- Treatment begins with removal from the cold environment and placing the affected area in warm, *not hot*, water, until re-warmed;
- Seek further medical attention as required.

Hypothermia

- Hypothermia is an abnormally low body temperature – less than 34°C (as compared to normal body temperature of about 37°C);
- People suffering hypothermia may act inappropriately with uncharacteristic stumbling, mumbling, and fumbling, as their body temperature continues to lower;
- Early recognition and prompt medical attention is crucial. Left untreated, hypothermia may progress to coma and/or death;
- Call 9-1-1. Don't forget to protect yourself from the factors that originally lead to the patient's situation;
- Gentle re-warming should start as quickly as possible, including: removal of wet, or constrictive clothing; covering with blankets, or sleeping bags; and protecting the person from further heat loss (wind, moisture and contact with cold surfaces);
- Dress in layers – it's easier to remove layers, when warm, rather than not having enough layers, when cold.

Having access to a survival/first-aid kit within your vehicle is also advised.

***The Belgravian*: Feedback from Our Readers**

(Please fill out and return to 11532 – 74 Ave or complete our online survey at <https://www.surveymonkey.com/s/SFL92WF>)

1. Which parts of the *Belgravian* newsletter do you like to read? (Check all that apply)

- b. Editor's Note Hall Renewal Progress
- d. President's Update (Made-in-Belgravia sessions) Belgravia School Events (eg. Ever Active events)
- f. Belgravia Resident Profiles Advertisements
- h. Councilor Ben Henderson's Articles End of the World Committee Updates

Community service Announcements

2. What topics/issues do you like to read about in the *Belgravian*? (Check all that apply)

- b. Traffic, transportation Zoning and development
- d. Safety and security issues Community events

Resources for children and parents

3. How do you like to receive news about Belgravia?

- b. The *Belgravian* newsletter BCL Facebook
- d. Personal e-mail messages via BCL Member e-mail list Belgravia Community League web site

BCL Twitter

4. Would you use a Community Bulletin Board for posting posters, community announcements?

- b. Yes No
- Unsure

5. Please let us know your age category

- b. Under 18 18-25
- d. 26-35 36-45
- f. 46-55 56-65
- h. 66-75 76-85
- Over 86

6. Please let us know your gender:

7. Do you rent or own your home?

- b. Rent Own

8. How many years have you lived in Belgravia?

9. Do you have any questions or ideas about how we can improve the *Belgravian* newsletter?

BACK BASICS & FOOT CARE

MASSAGE
THERAPY

CARE FROM HEAD TO TOE SINCE 1981

There is no substitute for experience.

Massage Therapy: Active & Passive Treatments
Individually Designed Treatment Plans

*Deep Tissue & Accupoint Massage • Meridian
Therapy • Myofascial Release • Therapeutic Exercise*

*Tension • Stress • Prevention • Relaxation • Flexibility • Pain Relief
• Back & Neck Pains • Whiplash Injuries • Migraines • Headaches
• Obesity Issues • Arthritis • Accident • Poor Posture • Complex Regional
Pain Syndrome • Fibromyalgia • Frozen Shoulder • Peripheral Vascular
Diseases • Reflex Sympathetic Dystrophy • Lewy Body Dementia
• Exercises • Strengthening • Balance Nerve & Muscle Tension • Sciatica*

Laser Treatment for Fungus & Healthy Nail Growth

Nails: Thickened Deformed Discolored • Corns • Callus • Heel Cracks

**You've been
to see Maria,
haven't you?**

*People of ALL ages
and lifestyles
benefit from
Massage Therapy.*



For more info about our
variety of treatments scan
this code with your smart phone
for a direct link to our website or
go to www.backbasics.ca.

**How can
you tell?**



**Keep your
loved ones
on their feet.**

**Purchase a gift
certificate today!**

**10% Discount
OFFER UNTIL DEC. 24, 2014**

Maria Krieg • RMT • Registered Massage Therapist



780-436-8059

11610 - 75TH AVE, EDMONTON • contact@backbasics.ca • www.backbasics.ca